

# Scotshouse

## Community Plan 2018-2028

**DRAFT**

November 2018



## Contents

1. Introduction.....	5
2. Community Profile .....	6
3. Area Character Assessment .....	13
4. SWOT Analysis .....	15
5. Community Views .....	19
6. A Vision of the Future .....	22
7. Main Strategies & Priorities .....	23
8. The Actions & Actors.....	33
9. Making it Happen .....	39
Appendix A: Settlement Map, Scotshouse .....	42
Appendix B: Map of infrastructure projects .....	44
Appendix C: Draft Plan Feedback Form.....	45



## Foreword

Co. Monaghan communities have a long and proud tradition of community development. A strong community takes a special sense of pride in the area, reaches out to those that are vulnerable, cares for those most in need, celebrates together when times are good, and gathers around to support one another in the sad times.

People get involved in their communities because they love where they live, and they want to look after their area. They also want to protect it and ensure it prospers in the future.

Monaghan County Council is committed to supporting communities to be the best places to live, work and visit in Ireland. As part of our drive to support communities, we are helping communities to prepare Community Plans. Through a process of consultation with the people living and working in your community, Council staff have drafted a Vision of the Future for Scotshouse and compiled a set of Priorities which will help the community to develop towards this Vision over the next ten years.

This document is a Draft Plan, which is a first try at gathering up everyone's thoughts on the way forward. We'd like you to take a look and let us know what you think. It's not too late to add new ideas, take some things out, or even go back to the drawing board, if necessary!

If someone asked you what kind of community would you like to live in, what would you say to them?

- What would make Scotshouse a great place to live in?
- Have the right priorities been identified in this Plan?
- If everything in this Plan was achieved, would life in Scotshouse be better?

At the back of this Plan, you will find a short questionnaire, which we'd appreciate if you'd send back to us with your thoughts. We'll use those to make any necessary changes and additions to the document, before finalising your Community Plan.

Monaghan County Council is committed to supporting the communities of Co. Monaghan to become the best they can be. We hope to play a significant role in many of the projects outlined in the Plan and view the drafting of this document together with you, the community, as the first step in a long and fruitful partnership.

Thank you for your investment in your community, and in helping to make Co. Monaghan the best county to live in Ireland.



**Eamonn O Sullivan**

**Chief Executive**

**Monaghan County Council**



**At the back of this document, you will find a short survey, which is provided for you to give us your thoughts. Please detach and return to any of the following:**

Community Dept  
Monaghan County Council  
The Glen  
Monaghan

Clones Ballybay MD Offices  
Pringle Building  
Monaghan St  
Clones

Box provided in  
Scotshouse  
Community Centre

You can also fill out the survey online by following this link:  
<https://www.surveymonkey.com/r/BVY59T7>

**Please return your submission by Friday January 18<sup>th</sup> 2019.**

We hope to publish the final Plan by the end of February 2019. If you would like a copy of the final Plan, please make sure to supply your contact details with the survey form.

## 1. Introduction

Monaghan County Council and the community of Scotshouse have a long history of collaboration, going back through the Tidy Towns competition. In 2016, the Council and Tidy Towns group came together to provide a playground for the village beside the community centre, with the community gaining access to the site by way of donation of the land by Joe Mulholland and Kieran Burn and the Council accessing grant aid from the Dept of Children & Youth Affairs. An opportunity then presented itself for the Council to acquire the remainder of the site, and during 2017 the Council consulted with the people of Scotshouse on what the site should be used for. The result was a plan for the creation of a community park, and the selection of a general design for the park, which is to have a strong biodiversity theme, and zones where the community can gather to socialise.



**Consultation on  
Community Park 2017**

In mid-2017 the Council secured a small amount of funding from the Town & Villages programme, which it used to initiate some of the work on the community park. It also became aware that there would be further opportunities for other funding in the future, and that to be best prepared to take advantage of the funding on offer, the community needed to come together and discuss its needs. The Council organised a public meeting in November 2017 to discuss the community's needs. At that meeting, the various groups and residents present agreed that a Development Plan was needed, and agreed to forward their plans to the Council, for amalgamation into one global Strategic Plan for the area. A follow up meeting in January 2018 identified many key needs in the area. An online needs survey was also carried out, to give those not present at the January meeting an opportunity to have their say.

This draft Community Plan was produced in June 2018 and considers all of the comments submitted throughout the various meetings, emails, and online submissions. It will be circulated to the community for discussion, before being further developed to take into account any comments received during the consultation period. It will then become the final Community Plan for the village.

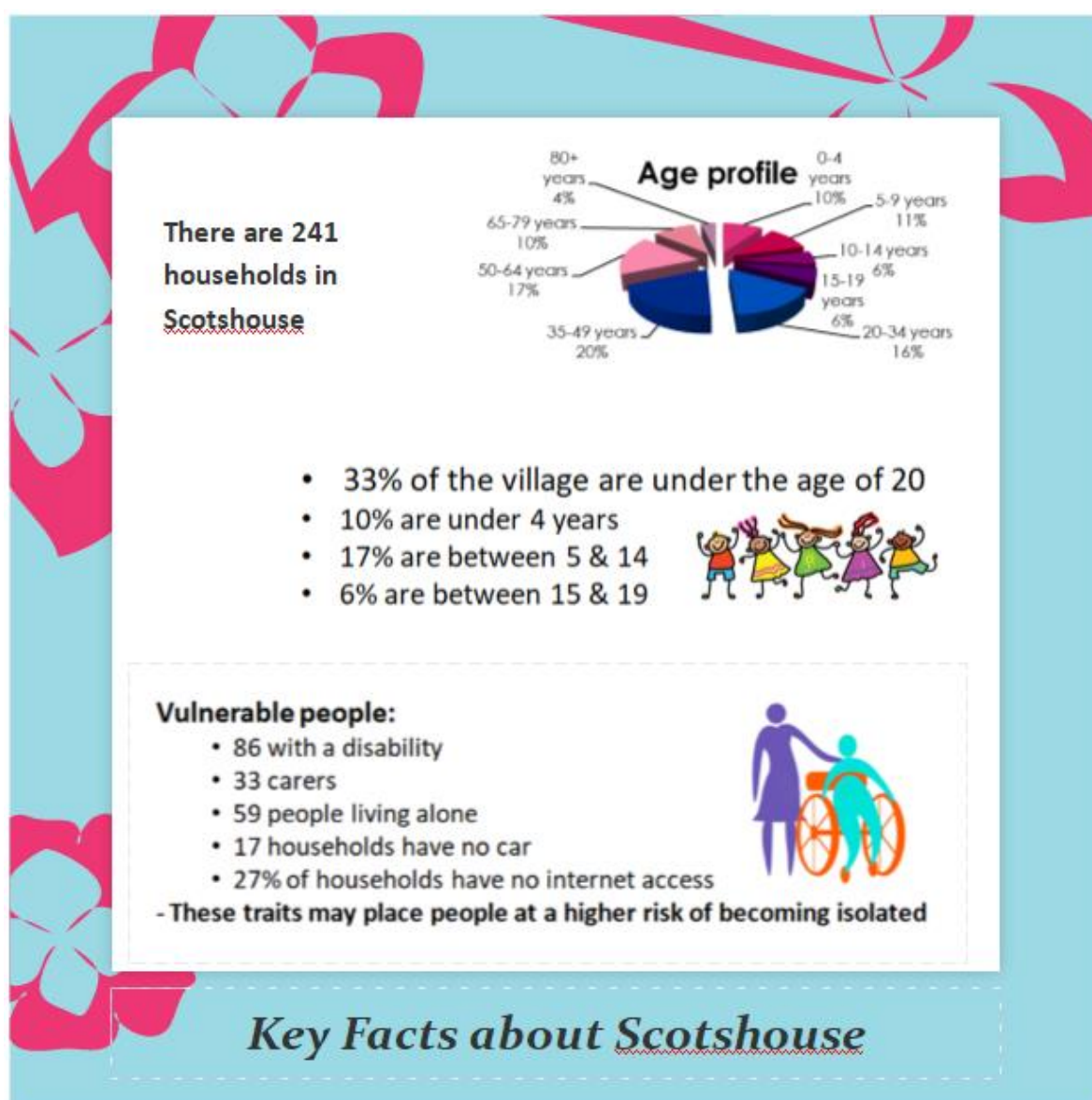
## 2. Community Profile

### Location

Scotshouse is a small agricultural village about 7 kilometres from the border town of Clones, in County Monaghan. It lies close to the border with both County Cavan and with Northern Ireland, specifically County Fermanagh. Cavan town is 18 km away and Monaghan town is 27 km away.

### Population

The village was home to 220 people in 2016, according to the Census. The wider Currin Electoral Division, in which the village is situated, had a population of 676.



## Deprivation

The deprivation score for the District Electoral Division in 2016 was -6.65, or 'marginally below average'. This was a slight improvement from 2011 (-6.88), and in general the DED held steady with the fortunes of the wider area around it over these years. However, the area score must be considered in the context of the County score, which is -3.23. In general, west Co. Monaghan shows higher levels of disadvantage than ED's nearer the N2; the situation in Scotshouse needs to be monitored to ensure that it does not slide into continual decline.

## Housing

Almost 22% of the houses in Scotshouse are rented, the majority from the private sector. 108 people are reliant on private landlords for their accommodation. 100 homes were built since 2001, giving accommodation to almost half (321) of the DED's population. 36% of the housing stock was constructed before 1980 and is therefore likely to not meet modern standards of energy efficiency.

## Nationality & Religion

8% of the population of Scotshouse are not originally from Ireland. The most common country of origin for non-Irish nationals is Lithuania (22 people). Five people stated on the Census form that they do not speak English well.

There is an active minority Protestant community in the area, centred around the historic St. Andrew's Church of Ireland church in the village centre.

## Heritage

The village lies in the parish of Currin. It derives its name from Willie Scot, an English soldier in Cromwell's army in the early seventeenth century. Just outside the village is the Hilton estate, home to the Madden family since the 18<sup>th</sup> Century. There is a timeless quality to much of the area, which benefits from many mature tree lines, and is steeped in a rich heritage, such as the finely preserved archaeological site at the Black Pig's Dyke, the old boundary of Ulster, which lies just outside the village.



**Hilton Park**

## Environment

There is a small stream running through the northern edge of the village, between the school and the community centre. The village benefits from a proliferation of mature deciduous trees, a legacy from its association with the nearby Hilton estate. The countryside is largely unspoilt, and is a haven for wildlife, including red squirrel, pine marten and even woodpecker. The whitethorn hedges which are such a feature of the Monaghan landscape, are strongly in evidence throughout the area.



## Social & Community

The community has built up considerable 'social capital' over the years. The community assets include:

### Buildings & Facilities:

- **Scotshouse Community Centre:** The Centre is approx. 20 years old and consists of a hall and stage area, an upstairs meeting room above the stage, toilets and small kitchen to the front. There are plans to extend the hall to provide additional meeting facilities, and also to finish off the car parking, which is at present just a hard-core surface and has no definition to the road, which breaks up the street scape and contributes to a sense of 'disconnection' throughout the village.



**Community Centre, showing unsurfaced car park to front**

- **Currin GFC:** The playing field is located some 2km outside the village. There are changing facilities and a small car park. The club fields Junior mixed juveniles and Intermediate men's teams. It has recently purchased an adjoining farm and plans to develop additional training facilities.
- **Running track & small playing pitch** behind the school, belonging to the Parish. The bones of the amenity are in place but needs modernising.
- **St Enda's primary school** in the village has an enrolment of 45 pupils in the 2017/18 school year. It has capacity for around double this number.
- **Community playground.** This was opened in 2016 and was a joint development between the Tidy Towns and Monaghan County Council, with land donated by a local developer.





**Playground beside community centre**

- **Church of St Andrew**, which is over 200 years old, caters for the Church of Ireland congregation in the area. There is no parking on the premises, so community volunteers have formed a parking committee and provide a stewarding service to facilitate traffic management at larger events as required
- **Church of Immaculate Conception** is the Catholic facility in the village.
- **Connolly's** There is one shop and one public house in the village. It is the social hub and is the place to which the community gravitates for celebratory occasions.

#### **Projects in development:**

**Community Park:** Monaghan County Council has purchased the site beside the community centre/ playground, and following consultation with the community, has plans in place to develop it into a community park.

**Curry GAA:** Curry GFC is the oldest (formed in 1886) and the smallest club in County Monaghan. They have recently purchased lands adjacent to the playing pitch with a view to developing a much needed second pitch and training ground. The Club was allocated €40,500 under the 2017 Sports Capital Grants Scheme which will see development of the project commence. Separately, the Club is in the process of building a new stand to increase spectator enjoyment of games and provide universal access for all, especially for the older members of the community.

**Community Centre:** Scotshouse Community Centre Committee has plans to carry out refurbishment to the existing building. The planned refurbishments include a kitchen upgrade, the provision of storage space and the provision of a meeting room, as well as an overhaul of insulation, interior finishes, electrical and toilets and surfacing of the car park. The approximate cost of the proposed works is €200,000.

### Groups:

**Tidy Towns:** The group participates in the National Tidy Towns competition and organises clean-ups and activities throughout the year. In addition, there are fledgling residents' committees in the new estates. The Tidy Towns have entered the National Tidy Towns competition every year since 2007, and in 2017 were rewarded with the County Endeavour Award for the entry which had gained the most marks between 2016 and 2017 in Co Monaghan.

**ICA.** The Scotshouse branch of the Irish Countrywomen's Association meets monthly in the community centre. The guild is over 50 years in existence.

**GAA.** The local club is Currin GFC, which covers the wider parish as well as the village of Scotshouse. The club grounds is located approx. 2km from the village. Currin GFC currently field teams at Senior Level, playing in the Intermediate Competitions, Under 21, Under 17 (Minor), Under 15, Under 13, Under 11, Under 9 and Under 7. The age grades from U7 to U11 can include girls if they wish to participate. From U13 on the Club only fields boys/male competitions. The Club has no structure in place to cater for girls wishing to play games other than transfer to other clubs in the locality. The Underage grades at U21/U17/and U15 have only been possible through agreed amalgamations. In 2018, Currin fielded teams at U13/U11/U9 and U7 without amalgamations but in all cases relied heavily of children from a grade below. This is not unusual for smaller clubs but the extent of that reliance in Currin is probably more than in most.

**Bowls** There is an indoor bowls club, which uses the Community Centre as its base. Games take place weekly, sometimes twice a week.

**Youth Club.** A newly established and much needed initiative in the village, supported by Youthwork Ireland Monaghan out of their Clones base. The group has received funding to develop youth facilities in the Community Centre from the Community Enhancement Fund in 2018.

**Currin Killeevan Aghabog Community Games** – The community Games in Currin/Scotshouse is inactive at present. Some participants join with the Killeevan event or have joined the Clones Athletic Club, both of which train at the Peace Link in Clones.

**Community Text Alert** – A new group is in the very early stages of being established, and a committee has been put in place.

### Activities

The main hub for activities in the area is the community centre. Activities include keep fit, dance classes, bowls and a senior citizens party at Christmas.

There is no local festival or established annual community event in the village.

### Human Resources

There are currently 3 workers on 3 different schemes in Scotshouse:

- Rural Social Scheme
- TÚS
- CE Scheme

One of the employees is assigned solely to works at the graveyard & church; one works in the village, school & Protestant Graveyard, one works around priest's house & church & village.

### Attractions

**Hilton Park:** Located on the edge of the village, this parkland estate and 'big house' goes back to 1734 and is now being run by the Madden family as a country house hotel. It hosts occasional events, such as plays. However, in general the grounds are private.

**Clones Golf Club:** There is an 18-hole golf course two km outside the village, which was developed on the Hilton estate.

**Black Pig's Dyke:** A finely preserved section of this ancient earthwork has been excavated and can be visited just outside Scotshouse village. The Dyke is thought to have once served as the fortified border for the kingdom of Ulster. It is one of the oldest and best preserved linear earthworks in Europe, and was the subject of a recent archaeological study, which can be accessed on [www.blackpigsdyke.ie](http://www.blackpigsdyke.ie)

### Transport

The village is probably one of the best served rural areas in the county in terms of public transport, thanks to the Cavan Monaghan Local Link rural transport service. It operates a weekly service to Clones on a Friday morning, leaving Scotshouse at 10.15 and passing through Newbliss. The bus departs from Clones to return to Scotshouse at 12.15.

In addition, a pilot **weekend evening** bus service was introduced in June 2018. It runs on Friday, Saturday and Sunday evenings, and is designed to enable those who wish to socialise to be able to do so without needing access to a car.



A **'Daily Commuter'** service started on 1<sup>st</sup> September 2018 between Cavan and Monaghan and runs through Scotshouse in both directions five times a day from Monday to Saturday.

## 176 Cavan - Monaghan

CAVAN - MONAGHAN VIA BALLYHAISE - SCOTSHOUSE - CLONES - NEWBLISS - THREEMILEHOUSE						
Pick Up Point	Monday - Saturday					
Cavan General	07:30	09:45	11:30	16:00	17:55	
Cavan Bus Station	07:33	09:48	11:33	16:03	18:00	
Cavan Institute	07:36	09:51	11:36	16:06	18:03	
Ballyhaise	07:41	09:59	11:41	16:11	18:08	
Scotshouse	07:53	10:13	11:53	16:23	18:20	
Clones	08:05	10:25	12:05	16:35	18:32	
Newbliss	08:16	10:39	12:16	16:46	18:43	
Threemilehouse	08:26	10:51	12:26	16:56	18:53	
Monaghan Dawson St	-	11:03	12:38	17:08	19:05	
Monaghan Library	-	11:06	12:41	17:11	19:08	
Monaghan Hospital	08:38	11:09	12:44	17:14	19:11	
Monaghan Bus Station	08:40	11:11	12:46	17:16	19:13	
Monaghan Institute	08:45	-	-	-	-	

MONAGHAN - CAVAN VIA THREEMILEHOUSE - NEWBLISS - CLONES - SCOTSHOUSE - BALLYHAISE						
Pick Up Point	Monday - Saturday					
Monaghan Institute	-	-	-	16:15	17:30	
Monaghan Bus Station	07:35	09:00	13:00	16:20	17:35	
Monaghan Hospital	-	09:06	13:06	16:26	17:41	
Monaghan Church Sq., Diamond	07:38	09:09	13:09	16:29	17:44	
Threemilehouse	07:49	09:20	13:20	16:40	17:55	
Newbliss	08:01	09:32	13:32	16:52	18:07	
Clones	08:12	09:43	13:43	17:03	18:18	
Scotshouse	08:25	09:56	13:56	17:16	18:31	
Ballyhaise	08:37	10:08	14:08	17:28	18:43	
Cavan Institute	08:47	10:18	14:18	17:38	18:53	
Cavan Bus Station	08:51	10:22	14:22	17:42	18:57	
Cavan Hospital	08:57	10:28	14:28	17:48	19:03	

### 'Daily Commuter' bus timetable

There are no rural taxi or hackney services in the village.



### 3. Area Character Assessment

The Gaelic translation for Scotshouse is Achadh na hAbhla, or 'Field of the Apples', and would lead one to expect to find a proliferation of orchards in the vicinity of the village. Unfortunately, as one drives through the village today, there is little evidence of the area's association with apples.

The prevailing character of the area is rural, with the village nestling into a relatively undeveloped part of the drumlin landscape of west Co Monaghan. The village benefits aesthetically from the proximity of Hilton Park demesne, as the mature trees along the approach roads have added greatly to the appeal of the village.

There are some fine examples of dry stone walls in the village which demonstrate local techniques; they ought to be celebrated and used more often throughout the village. Some lengths of wall have been removed, and ought to be replaced, and repairs are needed at some locations.



There are a number of older buildings in the village and on the approaches, which give a feel of age to the village. Care must be taken that this does not develop into a feel of dereliction, as this can impact on everyone – from the general morale of the community right through to house prices and the ability to attract new residents and businesses to locate to the area.



Dereliction in the village centre



## 4. SWOT Analysis

Every community, and every place, has attributes which give it an advantage over its neighbours, and maybe a few things that are still a work in progress. Arranging the key attributes of an area under the headings of '*strength, weakness, opportunity, threat*' can help a community to decide how to harness the assets and tools it has at its disposal, and to get the best from them.

We have prepared a draft SWOT analysis for Scotshouse. This will be further developed at the public consultation workshop at which this draft document will be presented.

Strengths	Opportunities
<ul style="list-style-type: none"> <li>- Long-established village</li> <li>- Unspoilt rural location</li> <li>- Mature tree lines through the village &amp; on approaches</li> <li>- Rich heritage</li> <li>- Primary school in village</li> <li>- Community centre in village</li> <li>- Active GAA club with own grounds</li> <li>- Active Tidy Towns</li> <li>- Know-how in community to deliver projects like playground, community centre, GAA complex</li> <li>- New playground</li> <li>- A community which knows how to pull together</li> <li>- Willingness of people to get involved</li> <li>- Rural transport service</li> </ul>	<ul style="list-style-type: none"> <li>- New housing developments brought many new residents into the area</li> <li>- Lots of children and young people in the village at present – how to harness their energy?</li> <li>- Land acquired by Council to build a community park in village centre</li> <li>- Redevelopment of community centre to maximise its use</li> <li>- Running track behind community centre is available for development</li> <li>- Boundaries to open space throughout the village, if approached in a collaborative way with landowners, could create a significant impact on the visual appeal of the village</li> <li>- New youth group</li> <li>- New text alert group</li> <li>- Village stream could provide opportunities for biodiversity and water quality education/ awareness raising, sustainable energy projects, and village enhancement feature</li> </ul>
Weaknesses	Threats
<ul style="list-style-type: none"> <li>- No area development group to drive overall village development</li> <li>- Some older buildings in poor repair</li> <li>- Many boundary fences/ kerbs missing, creating a feeling of 'disconnectedness' through the village</li> <li>- Derelict sites/ stalled development</li> <li>- No childcare service</li> <li>- Limited access to training locally</li> <li>- Limited activities which enable the community to come together &amp; build a sense of community spirit</li> <li>- Limited safe physical activity amenities, outside of GAA</li> <li>- No post office</li> </ul>	<ul style="list-style-type: none"> <li>- Non-integration of new residents with existing community</li> <li>- Long hours of commuting residents leaving less time for engaging in community life, eventually weakening the social fabric locally</li> <li>- Fewer volunteers</li> <li>- Younger people not given opportunity to develop leadership skills and build capacity to give back to community</li> <li>- Pollution, climate change, littering etc may damage the largely unspoilt environment of the area</li> <li>- The derelict properties and unfinished development sites create an unloved air, which lowers the general morale of the community, and makes it harder for everyone to invest in the area's future</li> </ul>

## **Scotshouse's Key Strengths & Advantages**

The good news is that we do not have to start from scratch to build a fantastic community it is 60% there already (according to those who took part in our survey, who gave living in Scotshouse a 6 out of 10). There is a community building. There is a shop. There is a playing pitch. There is a school. There is new blood in the area which can be harnessed to get new activities going or support increased activity in existing clubs.

The natural setting of the village is something which could be made more of, particularly the mature trees and the stream which passes behind the community centre. These days, with a focus on biodiversity and a drive to support our pollinating insects, the disused spaces in the village, along with the hedgerows and mature treelines, could be managed as a haven for wildlife, and could be a very attractive feature as well as an educational resource.

The location of the village could be turned into a positive, if viewed from a tourism perspective. For example, the Council is working hard to provide a greenway along the Ulster Canal and will have completed as far as Smithboro by 2021. The next planned phase is from Smithboro to Clones. The Kingfisher Cycle Trail already passes through Scotshouse and could provide a link to the greenway. The peaceful setting, along with the village's rich heritage, would be an attractive addition to the Ulster Canal Greenway's product offering.

## **Issues to be Addressed**

It is important that the local community comes out and supports what is happening locally. 'If you don't use it, you'll lose it' applies very clearly in a rural setting, where numbers are needed to keep services viable.

This is very important with respect to the recently introduced rural transport services through the village.

The Community Centre is underused at present and would benefit from a re-organising of the building. It is hard to do this and also to build an active programme of activities in the centre. We therefore suggest that the Centre committee considers introducing two committees; one to focus on the building and one to focus on the programming/ activities. An approach that has worked well in other areas is for every group which uses the Centre to serve on an Activities Committee and help to plan the programme of events and activities. This committee in turn elects reps onto the Buildings Committee, to help develop the amenity and to ensure there is communication between the two committees.

Scotshouse is a small relatively isolated village, with a lot of groups competing for the available resources. This can lead to a continual drain on residents' pockets from almost constant fundraising requests. Currin GFC is the biggest and most dominant organisation in the Community and because of that its revenue generating power

and activity greatly exceeds that of any other group. Different groups in the community tend to rotate and disperse fund raising activities in order to allow a reasonable degree of success for each and the Community as a rule supports each event very well. This co-operative spirit, which is greatly facilitated by significant cross membership, should continue to be encouraged.

Perhaps groups could come together and agree a fixed calendar of 5-7 fund raising events in the village each year, or take it a step further, and organize one continuous fundraising activity, such as a National Lottery Syndicate, and divide the proceeds according to the needs of each group?

Ideally, the community should work towards finding a way to become sustainable, so that the need for continuous fundraising is reduced. As a rule, being sustainable for a community project means that a project doesn't need to rely on fundraising in order to cover running costs. This is a good goal to work towards. Where possible, projects should aim to save a little towards repairs, renewing and even improving/ expanding their projects. A reasonable target here would be to aim to save 10% of the value of the buildings in your group's possession every 10 years.

For the community to be able to undertake more activities over a quicker time period, it will need access to more resources. It will need more volunteers, and access to a steady income stream. This may be partly met by charging for participation in some activities, and partly by accessing grants. The community would be wise to put in place a regular fundraiser, to give it an independent source of income, which could then be used to leverage additional funds into the village for large scale projects, or to subsidise programmes such as children's summer camps or old people's parties, or to respond to a crisis in the community.

The current manner of running the community centre's heating and lights via a meter needs to be looked at, as it may be deterring people from using the centre, as well as being expensive. This would require a zoning of the heating system. Funding may be available for this as an energy efficiency initiative.

The lack of a post office in the village, and the lack of a coffee shop or similar amenity are all felt.

There is a need for a social hub/ drop in/ hang out area in the Community Centre where library books could be exchanged, clinic appointments made etc.

Derelict sites and unfinished building sites in the village centre need to be addressed. They have created a disconnected heart at the centre of the village. At the very least, some boundary treatment of the sites, removal of debris etc needs to be done. Similarly, some of the older properties around the village need some tidying up.

The wonderful old walls and mature trees around the village provide the basis for a very pretty rural village; however, neglect and insensitive development have pulled the heart out of the village over the years. This needs to be put back. Scotshouse is

fortunate in that it has a ready-made 'brand' in the orchards waiting to be employed as a device throughout the village to create a 'flow' and bring harmony back. The Black Pig's Dyke and the heritage of nearby Hilton Park also provide rich veins to be explored.

Over the years, the occasions on which the community come together have dwindled, and along with them, the opportunities for the community to demonstrate to the next generation the qualities which make the community of Scotshouse special have become too few. If we want to pass on values to our young people which will help them to navigate their way through life, we need to create a place where those values are on show every day, and where our young people have the opportunity to learn and practice those values. Where in Scotshouse do our children learn today to be loving, generous, resilient, joyful and compassionate? How can we promote the kind of environment that demonstrates these qualities? Perhaps community events such as family days and festivals have a role to play beyond raising funds....?

## 5. Community Views

We asked you what you thought about Scotshouse today, and what should be the priorities for making it a better place to live. Here's what you told us:

### **What are the best things about living in Scotshouse?**

Safe Playground Quiet Low Crime Rate Community Rural Shop  
Play

"The community life, everyone is like family in the area"

"Quiet, safe, friendly"

"It is a very friendly village and always there for each other"

### **What's NOT so good/ needs improvement?**

Young People Teenagers Transport Gaa Amenities  
Poor Broadband Roads Childcare Facilities Village WiFi  
Needs Support Community Kids Activities

"Access to other sports e.g. Tennis."

"The hall isn't being used to its potential, community access courses could be provided."

"No childcare facilities or after school clubs."

"Bad WiFi"

"Not much to do for younger people"

"When people throw their rubbish around the village"

"The pub, shop & petrol forecourt need investment & sprucing up. Entering the village from the graveyard side there are some derelict sheds & out buildings that look terrible. The old barracks of Fitzpatrick house needs sprucing up. The area opposite the playground is a mess with HGV lorries parked there. The old piggery building needs to be demolished"

"Areas left unfinished where buildings have been removed"

**We asked you what you would like to see in Scotshouse.** The people of Scotshouse suggested:

Roads Encourage Broadband Social Activities Bus  
 Community Centre Better Phone Lines Village Safe  
 Shop Transport Youth Club Involved Pitch Young People

"Last year's GAA Big Breakfast shows what potential is there. That was huge success. Annual cake sales for juveniles in brilliant. Again examples of what is possible. "

"Groups, for children and parents and the older people, giving people a place to go in the evenings and weekends, so people can get to know each other better, play groups, child minders, soccer clubs, dance classes etc"

"Community sports/fun day sponsored by local Co.Co. Develop the local running track at rear of community centre"

"Have more community driven events, bringing back the sports days that used to happen behind the community hall."

"Have a dinner in the community centre at least once a month for all the old people so they don't feel lonely "

"Bring back the local community bingo. Start a community text alert, Set up women's/ mens shed groups"

"Quit focusing community spirit on Currin Football"

"More social gatherings for all ages"

"Stuff for teenagers"

"A walking club"

### ***What would help people to connect to the community better?***

"Special interest groups that don't mind children. mother toddler group that allows new families to meet in the area, I know as a mother new to the country it is hard to meet people in the area and can be very lonely"

"More events in community centre - concerts, dancing, bingo."

"More community activities such as lighting for village at Christmas or a tree etc "

"Better amenities & facilities, more family driven attractions"

"Getting kids to play more sports besides GAA because not everyone enjoys it."

"Do more for children with wide range of disabilities"

"Currently community activities revolve around football or local church - we need more family related activities and maybe Bingo or Darts evening events for the adults?"

"More varied activities for ALL ages using the community centre. A cafe in the shop, pub or community centre to use as a meeting place "

"Information on what's happening in the area and how to get involved with various groups & activities"



In summary, you told us:

- **You want more activities and events, so you can get out and meet your neighbours more**
- **There needs to be more of a focus on family, and less on football.**
- **Activities are needed that are not focused on sport, and that cater for all ages and abilities**
- **You miss the days when there were fun sports days in the field behind the community centre**
- **The community needs to get better at communicating what is happening, publicising events and letting people know how to get involved with groups or make a booking in the hall.**

So, let's try and bring as much of this to life as we can. Our Community Plan for Scotshouse focuses on building opportunities for the community to come together as often as possible, so that the people of the area can strengthen their connection to each other, building up a strong community spirit and ensuring that Scotshouse is a fantastic place to live.

## **Turning Views into a Vision**

The people of Scotshouse have spoken. You have said what you like about your community and about the area. You have spoken about what you think is missing, and what would make Scotshouse an even better place to live. So, let's try and bring as much of this to life as we can.

The next section of this document puts forward a Vision for what Scotshouse might become if we all put our shoulder to the wheel and worked together to make it a place which is welcoming and supportive. It includes a number of projects which we think will help to get us there. Some of these can be done by people in the community; some will need a little help from the County Council to get across the line. By working together, we'll get there.

Our Community Plan for Scotshouse focuses on building opportunities for the community to come together as often as possible, so that the people of the area can strengthen their connection to each other, and on building the social infrastructure that provides the support which enables this to happen.

## 6. A Vision of the Future

A 'vision' is a picture that the community creates in its head of the end result of its efforts. It describes what Scotshouse will look like at a specified time in the future –say in ten years' time - after all the hard work has paid off, and the various initiatives have been put in place to create the 'Ideal Scotshouse'.

### A Vision for Scotshouse in 2028:

*"When you enter the village, you are greeted with a sense of welcome and happiness. There is a natural charm to the village, which is well kept. The community takes an obvious pride in its heritage which is evident in little touches throughout the village.*

*The hub of community life is the community centre and adjacent park, where people from the area regularly come together for organised social gatherings, as well as for informal drop-ins, training events and to access a range of services.*

*Everybody feels welcome in Scotshouse, and everyone plays their part in community life. Young and old are equally cherished, and there is something for everyone – both to contribute, and to do."*

There are four key elements to this Vision:

1. The **physical appearance** of the village
2. The **community amenities** which are built up within the village
3. The **services and activities** which are available to the people of the village
4. **Building community spirit**, so that everyone feels equally welcome and knows how they can contribute best to their community. The idea of giving back to community should be automatic to everyone in a strong community.

## 7. Main Strategies & Priorities

### Addressing the Physical Appearance of the Village

The streetscape is somewhat disjointed and lacking in continuity, partly due to the removal in places of plot boundary treatments such as fencing and hedgerows. It is proposed that these be replaced.

There are some fantastic dry-stone ditches and whitethorn hedges in the village, and it is proposed to extend these throughout the village to create a more 'connected' feel, to screen the more problematic visual aspects, and to create a dialogue between the village and the surrounding countryside.

It is proposed to reference the Irish translation of the village's name, 'Achadh na hAbhla', which suggests that the area was once associated with apple orchards, to create new themed signage for the village. These will give the area a unique identity, which can be extended into the planting scheme around the village.

Progress in this area will require collaboration between Scotshouse Tidy Towns, Monaghan County Council and individual property owners.

A full Village Enhancement Plan is needed, in order to address every area of the village in a planned, systematic way. This will be the first Action undertaken, and it will list all the other Actions, the order in which they will be addressed, and the people/ organisations who will be involved in each.

Key elements of the Plan will be the creation of an image for the village – we suggest building a theme around the apple orchards that the gaelic translation of the village name hints were once common in the area, and promoting the heritage of the area through signage and public art. We suggest also that the planting scheme should focus on native permanent plants, reflecting the mature trees and wonderful hedgerows in the area. These can be very effective in screening off unused land, support a wide variety of wildlife, are vandal resistant, and require much less maintenance than annual plants and flowers.

The Village Enhancement Plan will give the Tidy Towns group clear guidance for their work and will also provide guidance to property owners on how they might contribute to improving the visual appeal of the village.



Context and interest added to entrance of Oakland Grove by adding Oak avenue to left. Unfinished site screened off by planting apple trees to fit with Achadh na hAbhla theme of village. Remove laurels & replace with whitethorn, which supports more biodiversity and connects to the hedgerows throughout the village and surrounding countryside.



A lack of boundary to site opposite Connollys breaks up the centre of the village



A simple low whitethorn hedge creates continuity and restores the visual connection from one building to the next to maintain the streetscape



footpath would create definition & continuity  
in front of community centre  
and aid in the lining out of car parking spaces

The open-fronted car park of the community centre gives an 'unfinished' look to the premises, leaves the juncture where it joins the road prone to potholes forming, and breaks up the streetscape. Adding a simple low kerb or footpath would create a sense of continuity to the streetscape, and connect the footpath in front of the playground to where it continues, rather than ending in a void

## Improving Community Amenities

You told us that you would like more things to do in Scotshouse, especially non-GAA-related activities, which you felt were well catered for already.

**The priority projects which would enhance community life in Scotshouse are:**

- **More facilities within the Community Centre**
- **Completion of the Community Park**
- **Upgrading of the Running Track/ Field behind the Community Centre**
- **Provision of Childcare Facility**

### Community Centre

The Community Centre committee is keen to add a ground floor meeting room, so that additional activities such as counselling, public health clinics etc can be run in the Centre. It is also in need of storage space, and a general comfort overhaul. Many community centres around the country have benefited from providing dedicated spaces for various activities, such as a library/ coffee area to encourage the community to use the centre just to drop in casually as well as for organised events and activities.

One cohort of the community which particularly benefits from having a dedicated space is young people, for whom WIFI connectivity is important. Many community centres have also become involved in providing day care services for older people and childcare services at the other end of the age spectrum.

The Community Centre committee has a plan in place for a modest extension and refurbishment, costing just under €200,000.

An activities plan is also needed, to breathe new life into the programme of activities on offer through the Centre. For many of these, it is a simple case of inviting agencies to deliver courses etc in the Centre rather than incurring any significant cost to the committee. A good way to find out what social activities will attract viable numbers is to run 'come and try it' taster sessions over a number of weeks.

We recommend that a separate 'Programme/ Activities Committee' is set up, comprised of the groups and users of the Centre. Their focus should be on creating activities for every age and interest in the village and managing bookings.

This will free the Community Centre's Management Committee to focus on the building itself and how it can be upgraded to meet the needs of today and tomorrow's users. The process of planning the upgrade works should start with a focus group session with the existing users.

### County Council Site – Proposed Community Park

The Council has purchased the undeveloped housing site beside the community centre, and after consultation with the community, a design has been selected for a community park. It is intended that it will become a meeting point and hub, complementing the role of the adjacent community centre.



A basic design, which heavily favours biodiversity and natural play principles, has been chosen by the community, and this will be advanced on a phased basis, as funding becomes available. It is planned to provide a bridge linking this new amenity to the running track behind it, to create one seamless amenity for community use. It is also planned to provide direct access to the park from St Enda's School, thus providing a safe off-road alternative route to the village.

After the Park was agreed with the community in 2017, funding was secured to construct the 'teen hang-out area', adjacent to the playground. This was completed in late 2017, and funding is now being sought to complete the remainder of the park.



**The chosen design for the proposed community park, which will complete the corner of community amenities which includes the school, playing field & running track, playground and community centre. Together these will form a fantastic hub for community activity and will play an important role in the lives of the people of the area.**

### **Refurbishment of the Running Track**

The running track & playing field behind the community centre currently have a very basic surface. You told us that you would like to see this upgraded, and perhaps additional amenities such as outdoor gym equipment installed around the perimeter.

You also want to be able to use it for community events, such as sports days, festivals etc. This raises the issue of insurance.



At present the field belongs to the Parish, it may be necessary to lease the amenity to the community in order to ensure it is eligible for funding, and so that it can be insured appropriately and available for general community events.

### **Childcare Facility**

With the expansion in population and new families moving into the area over the past ten years, there is a need for local provision of childcare and after school care. The extent of the need has to be investigated, as this will determine how big the facility needs to be.

To get this project moving, a team needs to be put in place, and contact needs to be made with Monaghan County Childcare Committee (CCC), who will be able to advise and mentor the team as they research the childcare needs of the area and develop a plan which meets those needs. The CCC will also be able to advise on funding sources and help the team to put in place a management committee for the facility once up and running.

If the community commits to this project, Monaghan County Council will facilitate initial contact between the local community and Monaghan County Childcare Committee, to help get the project underway.

### **Sustainable Development**

The energy efficiency of older houses and community buildings could be addressed through the SEAI's Better Energy Communities initiative.

The planting scheme suggested in this Plan is based on native species which supports more wildlife and is pollinator friendly.

The Plan recommends that the community develops an independent source of funds, which will enable it to address the community's needs without having to resort to constant fundraising, which can drain a community's scarce resource and exhaust volunteers.

### **Finish Housing Estates**

There are substantial development lands in the centre of the village which are very visible, and which detract hugely from the village's appearance. These need to either be returned to good agricultural condition, turned into another amenity and maintained in an appropriately good condition, or developed, so that the village can flourish.

Monaghan County Council will enter into discussions with the owners of the properties to discuss how they can be assisted to bring forward their plans. Likewise, the owners of derelict and vacant properties in the village will be encouraged to put a plan in place to address their current state of neglect.

### **Taking In Charge**

An application has been submitted by the Residents Association of Scotshouse Close to have the estate formally taken in charge by the Council. Monaghan County

Council is currently in discussions with the Residents Association regarding outstanding matters.

## **Enhancing Services and Activities**

### **Enhancing the Programme at the Community Centre**

A consistent thread through the community consultation was that people of all ages would like to have more activities available locally. The basic facilities are available in the Community Centre; what is required is some imaginative programming and a budget to cover costs. Facilities can be improved over time. We recommend starting with a 'taster session' programme, where over a number of weeks, different activities are offered each night so that people can try out new things like pilates, ballroom dancing, heritage talk, etc. Based on feedback, the Centre might then opt to make some of the activities a regular feature in the weekly roster.

The Centre should consider how it might become a place which every member of the community has a reason to visit at least once a week. It needs to be a true hub of community activity and needs to work towards this goal.

We suggest that the Centre sets up a 'programming committee', whose purpose is to identify the services and activities which the community need and find ways to bring those to the Centre. In many cases, this may only require a phone call to set up, for example there are organisations in place who are prepared to step in and provide 'outreach training courses' in community venues on request. One initiative it might undertake, requiring little capital investment, is to start a 'couch to 5k' drive in the community. This will need to involve indoor fitness sessions, talks on nutrition, motivation etc, as well as organising a final 5km event, which will act as a community celebration. Another option might be to set up a walking club in the community. Advice / assistance on exercise programmes for all ages and all levels of fitness can be sought from Monaghan Sports Partnership.

We suggest that the Centre looks at activities which have been working in other areas, such as supports for local families, older people, people living alone, and people wishing to adopt healthier lifestyles by running regular events on nutrition, wellness and mental health by running talks and training events on these issues.

The Centre Committee should consider any proposed changes to Centre in the context of the needs of the community. For example, could small changes to the kitchen be made to make it suitable for holding small courses/ cookery demos, or could a small room be provided which would be suited to use by a counsellor/ nurse so that these services may be delivered by the HSE locally?

### **Rural Transport**

The people of Scotshouse are heavily reliant on the private motor car for getting about. But what if you're too young to drive? Or the family car is away to town already? The ability of young people and old people, in particular, to participate in activities, take up employment, or avail of service is especially impacted by the

availability – or lack - of transport. It is critical therefore that regular transport links to all of the surrounding towns are developed if the people of Scotshouse are to have full access to all of the opportunities they need and deserve. Cavan Monaghan Rural Transport Coordination Unit have introduced a number of services recently. If these are not used, they will be lost again to the area. It is therefore very important that the people of Scotshouse work hard at changing their travel habits to make sure that they maximise use of these services and give them a chance to bed down.

### **Community Alert**

The Community Alert group has been recently revived in the village, which will enable householders in the area to avail of a range of useful initiatives, such as Text Alert, property marking, free smoke alarms to older people, and Seniors Alert. Monaghan County Council has a Community Safety Network in place which can offer support to any volunteers who get involved in this initiative.

### **Youth Club**

Scotshouse needs dedicated space which is available on a permanent basis for young people to use. The new youth group in the village has recently secured funding from the Community Enhancement Programme to set up a Youth Facility in the Community Centre. It is proposed to give over a room in the Centre to young people to use as a dedicated drop-in space. The project is in its infancy, but is a very welcome development, as it opens the door to the provision of a range of youth services and supports, as well as encourages young people to get more involved in other activities based in the Centre.

### **Children's Activities**

If you're not interested in GAA, what else is there to do if you're a child in Scotshouse? Activities such as a weekend kids' club, and a summer camp should be explored, as a support to parents, an educational resource to children and as a possible income opportunity for the community centre. Should there be insufficient numbers to run such activities in Scotshouse, the feasibility of organising a bus service to Clones, Cavan or Monaghan to facilitate children participating in activities there, by availing of the Local Link rural transport service should be investigated.

It is suggested that the best people to organise such activities would be a Parents Group. Interest has been expressed in parenting supports and parent & toddler activities; perhaps an active group of parents, working with the Community Centre and supported by the County Childcare Committee, might put together a programme?

## **Building Community Spirit**

### **Pulling Together**

We heard from many sources during the consultation phase of this project, 'it's all left to a few people to do'. Sometimes, people simply don't realise that their help is needed, and would be more than willing to give a few hours if asked.

We suggest that everyone in Scotshouse be asked, as part of the process of committing to this Development Plan, to sign a Pledge of Support stating that they are committing to playing their part to making Scotshouse the best it can be. This could also be a way of integrating new people to the village into the community.

This should be followed up with a list of groups looking for help and a list of activities which need help to get organised. Respondents to our Community Survey told us they would volunteer to help start a gym, a community alert group, and an initiative around positive mental health for both adults and children.

A '10-minute Volunteer' notice board should be started in the Community Centre where groups needing a particular task done can post it up and ask for support from a member of the community. This initiative should also be run through social media channels. A link-up with Monaghan Volunteer Centre will assist in getting this initiative started.

### **Improving Communication**

Building a reliable way of getting word out to all the community of events, activities etc is a very valuable piece of work, and one which should be prioritised. The community should agree on certain 'information channels' and run these well. For example,

- All local groups should submit news to the village Facebook page and Northern Standard notes as well as to their own pr channels
- The community centre should keep an up to date notice board in the lobby, which should feature local news, but also information which may be of use to local people, such as grants
- Consideration should be given to a paper-based Newsletter once or twice a year. This should be left around each house, as it provides an opportunity to contact everyone and get valuable feedback
- Consideration should be given also to a noticeboard in the village centre – either paper-based (but covered, to protect from the elements) or digital

### **Community Festival**

Strong communities come together often, and we need to create those opportunities. You told us that you miss the old sports days. We recommend that an event of that nature be re-instated. A family day, with a bit of craic, food and music, and which may even raise a bit of money towards the next community project.

We suggest that two annual events be introduced; a summer event, and a Christmas event. The summer event should focus on asking people for ideas, finding out what they wish to see happen in the community, listening to their comments about what is going on. The Christmas event should be a celebration of the community and focus on rewarding volunteers for the effort they have put in all year. A fun awards programme might be introduced as part of the event, with people competing for titles like 'most litter picked', or 'most hours volunteered'. The ultimate winner might be declared the Mayor of the community for the coming year and might 'officiate' at events the following year. The Christmas event might be linked to the annual OAP dinner.

### **Community Council**

We recommend that all the groups in the area come together to form a Community Council. This will make it easier for the community in general to stay in touch, agree what needs to be done, review this Plan, meet with the County Council, decide which projects should be done first, where funding should be allocated etc.

Each group in the area should be given one seat on the Community Council. This Plan will become the Community Council's guiding document, and it will meet to oversee progress on the delivery of this Plan.

## **The Main Objectives Behind the Priority Themes**

- *The 'why' behind what we are proposing*

### **Support to Families**

Age profiling suggests that childcare services and facilities for young people are urgently required. The needs survey revealed that there is an interest in parenting and parent & toddler groups. Activities for children who are not gifted in ball sports were also highlighted as a need.

### **Addressing Isolation**

The research has shown that for many reasons, there are many people in the community who are at risk of becoming isolated, be it because they live alone, or they are newly arrived to the area, or they have small children and can't get out much, or they are disabled, or they have no transport or no internet access.

Councils and community groups working together can be very good at addressing causes of isolation, through the provision of services, the development of amenities, and the running of activities such as fun days, evening classes etc.

A number of actions are proposed for Scotshouse, including the creation of a Community Park, where people can come together, and the creation of an annual

family festival, to enable people to celebrate together and strengthen community connections.

### **Promotion of Community Spirit & Pride**

When a small community expands as rapidly as Scotshouse has over the past ten to fifteen years, it can be hard to ensure that all new arrivals feel welcome and included in community life. Involvement in community activities can be difficult when you don't know many people; it can be intimidating to step into a gathering where you're the only person who seems to not know everyone there.

Giving the community – young and old, newly arrived and lifelong resident's alike – a Community Plan to get behind, to sign up to, and to play an active role in delivering, gives everyone a chance to be a part of a fresh start for Scotshouse. Everyone will be asked to identify what part they play, and what gifts they bring to the community, and to pledge '10 Minutes a Month'.

There is a general air of neglect in the village, due to a combination of unfinished developments, stripped-out boundaries, vacant or derelict buildings and abandoned vehicles. Such eyesores work to demotivate all from looking after their properties and encourage vandalism and littering. Giving the village a 'face-lift' will lift community spirit. It will also spur people on to take on further projects and encourage them to think what else they might achieve. Giving the village a visual spruce-up will serve as a reminder every day of the progress the community is making on other projects too.

We recommend that as part of the village 'face-lift', a logo or brand for the village be developed using the heritage of the area as inspiration. This should be featured on welcome signage at the entry points to the village. Branding the village with a strong sense of identity which is unique to it will help to build a sense of pride of place amongst those who live here.

Apart from helping to promote a sense of place and foster a sense of pride, creating a clearly defined start point to the village can have a very practical benefit also, such as helping to calm traffic.

### **Sensitive Development & Promotion of Local Heritage**

The village is situated in an ancient pocket of the county and has much heritage to be explored. However, there is little signage, or literature promoting the area's history and culture. The Plan includes actions which will promote the area's heritage and make it more accessible for visitors. This will also help to generate local pride in the area.

Buildings of heritage value to the village, such as the old water mill and the former RIC barracks, might be considered as possible future community projects, should their current owners be willing to consider an approach.

The dry-stone walls and stone ditches which are traditional to the area are very distinctive. Those that remain should be preserved, and every effort should be made



to ensure that new developments work well with these traditional features. Where possible, the traditional techniques should be used to continue to create new boundaries, echoing and honouring the labourers of the past.

Funding might be accessed to provide training to local people in traditional skills, so that they might continue to use these skills on their own properties. This would benefit farm buildings etc for many years to come.

## 8. The Actions & Actors

The table below outlines the wider suite of projects and activities which have been suggested by you, each of which will play a place in achieving the vision set out for Scotshouse.

Unless a task is assigned to someone, it doesn't get done, and unless the task has a deadline, it never moves forward. So, against each Action, an organisation(s) is listed who will take the initiative to make that project happen, and an indicative cost and timescale for delivering the action where possible.

These Actions, Costs and Timeframes are for guidance only. Plans work best when they stay flexible and respond as local circumstances change. This is why we recommend that the community comes together once a year to review how things are going and see if it's priorities remain the same.

When prioritising projects, as a community, we recommend that the following criteria be used, in determining how one project is given priority over another on the list:

- **their potential to impact on a large number of people**
- **their potential to have far-reaching impact through facilitating people accessing personal development opportunities**
- **their potential to improve the quality of life for people in the village through improved services, access to opportunities etc**

**Only the people of Scotshouse will know the right balance of projects to meet their needs.**

<i>Project Detail</i>	<i>Who</i>	<i>How</i>
<b>Create a 'brand' that the people of Scotshouse can take pride in</b> <ul style="list-style-type: none"> <li>- Develop a Theme for Scotshouse, to be used on welcome signs, website, tourist info boards, newsletters, etc</li> <li>- Commission sculpture to place prominently in village centre, to create a focal point for the village, and promote the village 'brand'</li> <li>- Plant apple trees in community park and around the village</li> <li>- Create welcome features &amp; link to branding</li> </ul>	<p>Monaghan County Council/ Tidy Towns</p> <p>Monaghan County Council/ Tidy Towns</p> <p>Tidy Towns</p> <p>Monaghan County Council/ Tidy Towns</p>	<p>Commission logo for village, to feature Black Pig, apples, dry stone wall &amp; oaks. Incorporate the artwork from the winning entry in the art competition</p> <p>Develop an artist's brief, decide on a budget, invite artists to submit proposals</p> <p>Source heritage apple trees. Identify waste areas for regeneration/ screening off Schools competition. Winning concept to be used by graphic designer on final artwork</p>
<b>Improve Information throughout the village</b> <ul style="list-style-type: none"> <li>- Provide information point on local heritage</li> <li>- Develop community website</li> <li>- Provide information point in community centre</li> <li>- Build a contact list for distributing information around the community</li> <li>- Produce community newsletters &amp; distribute around the area</li> <li>- Provide digital notice board outside community centre</li> </ul>	<p>Tidy Towns</p> <p>Community Council</p> <p>Community Centre</p> <p>Community Council</p> <p>Community Council</p> <p>Monaghan County Council</p>	<p>Script panels on Black Pig's Dyke, Hilton Park, Scotshouse Village, select sites and access funding. Consider further projects, e.g. producing in booklet/ app form</p> <p>Develop an online portal, connecting all groups in the village and linked to Facebook page. Find a small group of people willing to write for the page and keep it updated. All groups to contribute content &amp; be given access to back-end of website</p> <p>Work with Citizens Information &amp; Youth services to carry a range of information material at a designated point in the community centre. Put up timetable for hall bookings &amp; keep updated. Provide space for other community notices</p> <p>To be used to keep the residents in contact with all that is happening around the community. Contacts to give as many as possible on social media or email, to save costs</p> <p>Time the newsletters to maximise publicity to upcoming events. All groups to contribute</p> <p>To be linked to website content, also to feature timetable of activities in community centre &amp; how to book</p>

<p><b>Invest in key infrastructural projects:</b></p> <ul style="list-style-type: none"> <li>- Create community park beside community centre</li> <li>- Upgrade parish field behind school, to become multi-sports facility</li> <li>- Improve appearance of village by addressing the disconnected feel created by removed boundaries, the unfinished development sites and the derelict &amp; vacant properties</li> <li>- Investigate feasibility of setting up a childcare facility in the village</li> <li>- Upgrade community centre facilities <ul style="list-style-type: none"> <li>- Surface car park &amp; provide boundary treatment to roadside</li> <li>- Provide social hub/ relaxation area/ coffee dock/ library</li> <li>- Provide youth area</li> <li>- Upgrade kitchen</li> <li>- Upgrade heating &amp; lighting systems</li> </ul> </li> <li>- Provide bus shelter &amp; bus stop to facilitate Local Link rural transport service</li> <li>- Investigate the feasibility of Monaghan County Council taking Scotstown Close in charge</li> </ul>	<p>Monaghan County Council</p> <p>Monaghan County Council/ local sports interests</p> <p>Tidy Towns / Monaghan County Council</p> <p>form a committee of local parents.</p> <p>Community Centre committee</p> <p>Monaghan County Council</p> <p>Monaghan County Council/ Scotstown Close residents/ developers</p>	<p>Design already agreed with community. Secure funding &amp; construct</p> <p>Take over the insurance &amp; lease on the grounds. Have drawings done for all weather pitch to centre, resurfaced running track &amp; outdoor gym equipment around perimeter.</p> <p>Develop a 3 year plan for the Tidy Towns. Publish the plan to promote public buy-in. Include sections on renewal of built heritage and on planting / landscaping. Improve entrance to Oakland estate, and boundary fence to Scotthouse Close estate</p> <p>Conduct a survey to determine the level of demand. Identify a suitable site near school. Work with Co Childcare Committee to access funding</p> <p>Carry out full needs analysis. Look at the services and activities that people want to be able to have in their centre. Find a way to make the building suitable for those needs. Invite users to design rooms which suit their purpose. Invite groups who use the centre to help programme the activities &amp; share the burden. Position the centre as the Hub of all activity in the community. Aim to have it somewhere that every person in the community has reason to go at least once a week. <b>The building must be relevant to people's lives or it will be left behind and will become a cold, empty shell.</b></p> <p>MD to liaise with CMTCU to identify routes &amp; suitable sites for bus stop.</p> <p>Discussions to take place between MCC and reps of developers/ residents.</p>
---	--	--

<p><b>Co-ordinate development to ensure maximum gain for everyone</b></p> <ul style="list-style-type: none"> <li>- Set up a Community Council</li> <li>- Organise two all-community events annually</li> </ul>	<p>Community supported by Monaghan County Council</p> <p>All groups</p>	<p>Community Council to contain a seat from each local group, and to meet annually with the County Council. This Strategic Plan will be their guiding document. Their job will be to monitor progress</p> <p>Summer event to check 'how are we doing and what needs doing next?', Christmas event to celebrate achievements and give thanks to volunteers for their efforts. Christmas event to include a fun awards ceremony</p>
<p><b>Build Social Capital in the community &amp; increase the capacity of the leaders in the community to carry out projects that bring about real change &amp; improvement.</b></p> <ul style="list-style-type: none"> <li>- Nurture future community leaders &amp; give talent an opportunity to contribute &amp; grow from their experience</li> <li>- Support the recently established youth club &amp; facilitate it to grow</li> <li>- provide training to local groups in committee skills, fund raising, event planning, and accessing funding</li> <li>- Set up a community fundraiser which can be run by and shared by all the groups, and which does not create an excessive draw on either the groups or the resources of the community</li> <li>- '10-minute volunteer' notice board initiative</li> </ul>	<p>All groups</p> <p>Community Centre</p> <p>Monaghan Public Participation Network</p> <p>Community Council</p> <p>Locate board in Community Centre, in the social hub, where it can be browsed through</p>	<p>Structured training programme in place. Deliberate policy of bringing new people onto committees and providing them with the opportunity to try new ideas.</p> <p>Youthwork Ireland have recently set up in the village. Support this newly formed group &amp; ensure it thrives</p> <p>PPN to carry out training needs survey with the local groups. MID and other agencies to be brought in to provide training. All local groups to avail of the training</p> <p>Research fundraising ideas. Agree the groups/ projects to benefit and the % split for each of the first 3 years.</p> <p>Contact Volunteer Centre; get volunteer locally to co-ordinate requests from groups for assistance. Post up the requests on dedicated notice board and on social media. Publicise the work. Celebrate the successes</p>

<b>Address road safety issues in the village</b> <ul style="list-style-type: none"> <li>- carry out road safety audit, to include condition of trees on approach roads, and pavement assessments, to ascertain where there is sufficient width to allow construction of new footpaths</li> <li>- carry out walkability audit of village</li> <li>- Provide safe crossing points to facilitate movement of people between new houses and community centre/ school</li> <li>- install traffic calming in Scotshouse Close</li> <li>- improve lighting in Scotshouse Close</li> <li>- provide car parking/ set down/ bus turning at school</li> <li>- provide road safety markings at school</li> <li>- construct footpath from village to GAA grounds</li> <li>- Equip local volunteers with additional hi viz vests and traffic cones to aid traffic management operations at funerals</li> </ul>	<p>Monaghan County Council</p> <p>Age Friendly County – MCC</p> <p>Monaghan County Council</p> <p>Monaghan County Council</p> <p>St Enda's NS/ Monaghan Co Co</p> <p>Monaghan Co Co</p> <p>Monaghan County Council &amp; Currin GAA</p> <p>Monaghan County Council</p>	<p>Road Safety Officer to commission report</p> <p>invite older residents to carry out audit. Incorporate their recommendations into the design of improvements in the village</p> <p>Road safety assessment of village to be carried out, suitable crossing points to be identified, funding accessed</p> <p>A review of all safety issues in Scotshouse Close to be undertaken as part of the process of the Council's taking the estate in charge</p> <p>Council to research ownership of vacant plot opposite school with a view to purchasing, and developing as car park and possibly site for childcare facility</p> <p>GAA to work with landowners along the road to secure the necessary land. Council to carry out the works</p> <p>MCC Road Safety Officer to supply</p>
<b>Enhance the range of services available locally</b> <ul style="list-style-type: none"> <li>- Provide afterschool service in village</li> <li>- Renew Community Alert in the area</li> <li>- Set up active retirement group</li> <li>- provide access to Wifi and pc at community centre</li> </ul>	<p>Community childcare group - yet to be established</p> <p>An Garda Siochana</p> <p>Community Council</p> <p>Community Centre</p>	<p>as part of childcare project. Perhaps a temporary service could be established in the community centre in the interim?</p> <p>focus on Text Alert &amp; property marking scheme. Work with Muintir na Tire to set up</p> <p>Build on annual Christmas OAP dinner to work with older people to identify their needs and set up a service around these. Link to U3A group in Monaghan town</p>

<ul style="list-style-type: none"> <li>- Build on successful bowls club in the village to reach out to new arrivals, children etc</li> <li>- Find a way to provide post office and ATM cashpoint services in the village</li> <li>- Get involved in Better Energy Communities programme &amp; avail of funding to carry out energy saving work in the community</li> </ul>	<p>Community centre</p> <p>community council OR private sector</p> <p>Community &amp; Monaghan Council Council</p>	<p>to facilitate the delivery of computer training in the community centre, and also the use of the pc by local people to do business online, and the use of the Wifi to facilitate the centre's use by young people as a meeting point</p> <p>Start a taster session, beginners leagues, kids lessons etc</p> <p>Could be done as a social enterprise in the community centre, staffed either by volunteers or Scheme workers.</p> <p>Start with energy audits &amp; home retrofits; community oil purchase scheme</p>
--	--	---



## 9. Making it Happen

To transform any Community Plan from a document into reality needs three key ingredients:

### **1: Commitment from the Community**

### **2: A Process/ Structure which enables everyone to play their part**

### **3: Resources**

We would like to energise the whole community behind this Plan and use it to get people who are not yet active in community life to come out and find out more about the benefits that being more closely connected to the community brings.

We propose to use the adoption of this Plan as an opportunity to ask people for a formal commitment to their community. This presents everyone with an opportunity for a fresh start and to travel forward together in building the Scotshouse they wish to share.

To help give this new approach the shape and structure it will need, we propose a new Community Council be put in place, to fill the gap which exists due to the lack of an Area Development Group. The Community Council will work to co-ordinate the efforts of all, for the overall benefit of the area rather than the good of any one organisation. It will also seek to address gaps, get new activities going etc if there is an agreed need. It will also meet with the County Council to review progress and address any barriers. And critically, it will develop and run a fundraising initiative which will provide the community with the means to finance its projects going forward.

We propose the following simple steps to ensuring there is follow-through on this Plan:

#### **1. A Community Launch for this Plan**

At the launch, the concept of every person signing up to playing their part in community life will be launched, and the '10 minutes a Month' volunteer campaign launched. Also, on offer will be volunteering opportunities with existing and new organisations in the community.

Committees which will be launched at the event will be:

- Childcare investigation committee
- Community centre activities committee
- Scotshouse Community Council – to consist of 1 seat for each organisation in the community
- Festivals committee

## **2. First meeting of Community Council**

The business of the meeting will be:

- to agree a Terms of Reference
- to lay out a Workplan for Year 1
- to set up a Fundraising system

## **3. Meet with Monaghan County Council**

This meeting will take first place six months after the Community Council is formed, then annually after this. The purpose of the meeting will be to review progress on the Plan and discuss how the Council can assist the community.

## **4. Agree when the first Community Feedback Event will be**

There are two Feedback Events designed into the Plan – a summer one and a winter one. As well as being designed as opportunities to celebrate together as a community and build community links and raise local morale, they provide an opportunity to update everyone on progress, which is critical to maintaining public support.

## **5. All groups to join Monaghan Public Participation Network**

Monaghan PPN was established in 2015 by Monaghan County Council as a structure to offer support to groups and to keep them in contact with the Council and with important developments in the community sector which might affect them.

The PPN runs training courses on a wide range of topics, sends out information to groups on upcoming funding opportunities, and appoints and supports community representatives on a number of decision-making bodies, including Council committees such as the Local Community Development Committee and the Joint Policing Committee.

Monaghan County Council relies on the PPN when deciding how best to support the community sector in Co. Monaghan and channels a lot of our community information through the PPN. If your group is not connected to this vital support structure, you may be missing out on crucial information on funding opportunities, calls for consultations and more. In addition, it is a prerequisite of Monaghan County Council that your group is registered with the PPN in order to avail of Council funding.

The PPN is there to support groups. Please use it.

## **6. Meet to review progress**

An review meeting between all groups and Monaghan County Council will take place every three years. The purpose of the meeting will be to identify barriers to

progress and seek ways to move forward. Monaghan County Council recognises that it has an important role to play in supporting communities to develop local facilities, and to bring projects to life. By meeting regularly on a structured basis, around an agreed set of priorities, we hope that we will be able to assist the people of Scotshouse to make the best use of their available resources, and avail of any funding opportunities which arise over the next few years.

Together, we will ensure that Scotshouse remains a vibrant community that people are proud to live in and love to call home.

## **Appendix A: Settlement Map, Scotshouse**

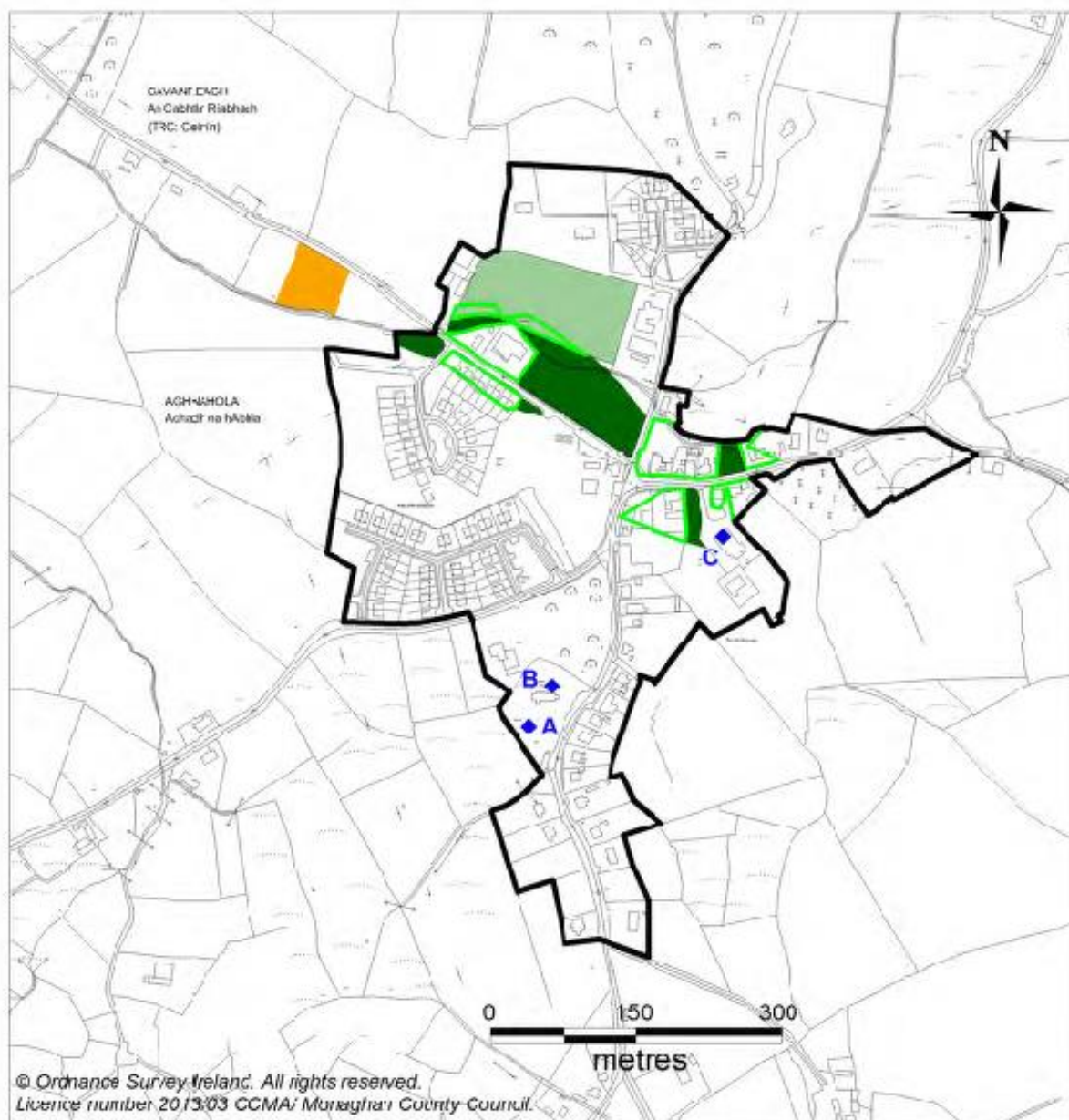
### **From County Development Plan 2013-2019**

#### ***A quick explanation of what it is and why it's important to have a look at it:***

The County Development Plan is a statutory document. It is used by Monaghan County Council to determine what is, and is not, permissible when you apply for planning permission.

Each urban area (which includes villages) in the County is given a 'development envelope', and planning permission is more straightforward to achieve within this envelope than outside it. Land can also be 'zoned' for different purposes. Land may be zoned for 'residential', 'commercial', 'amenity', 'industrial' or 'agricultural' use, for example. If you are seeking permission to put a noisy nightclub in an area that is zoned 'residential', expect a few eyebrows to be raised!

So, you should check that you agree with how your area is described (zoned) and that you are happy about it having been included or left outside the development envelope. It may make a BIG difference to the value of the land, and what you can get planning permission to build on it!



## Scotshouse

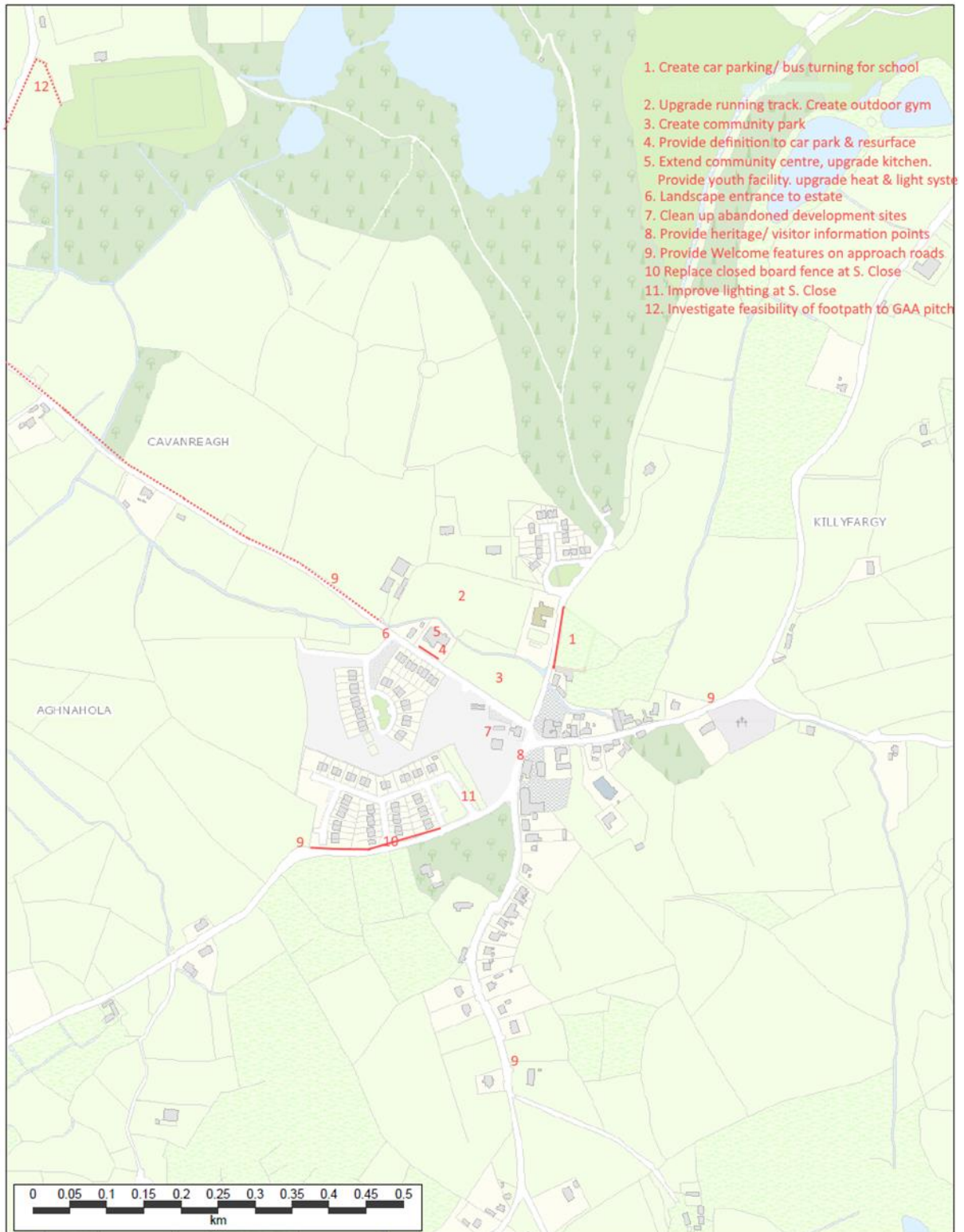
### Monaghan County Development Plan 2013-2019



#### Development Constraints - SCOTSHOUSE

- (A) St. Andrews Graveyard Currin (Protected Structure)  
 (B) St. Andrews Church, Currin (Protected Structure)  
 (C) Church of the Immaculate Conception (Protected Structure)

## Appendix B: Map of infrastructure projects





## **Appendix C: Draft Plan Feedback Form**



## PUBLIC FEEDBACK SECTION

## SCOTSHOUSE

## COMMUNITY PLAN

DRAFT PLAN – November 2018

Thank you for taking the time to review this document. We hope that you found much to like in it. Please let us know how the Plan can be further improved upon, by filling out the form below and returning it **before the 18<sup>th</sup> January 2019** to any of the following:

Community Dept  
Monaghan County Council  
The Glen  
Monaghan

Clones Ballybay MD Offices  
Pringle Building  
Monaghan St  
Clones

Box provided in  
Scotshouse  
Community Centre

You can also fill out the survey online by following this link:  
<https://www.surveymonkey.com/r/BVY59T7>

**Q1. Have we got the best projects/ actions in the Plan? Please tell us about any that should be added or taken out, in your opinion**

**Q2. Do you have any other ideas which you wish to see included in the Plan?**

**Q3. Do you support the idea of promoting the village's connection with apples - Achadh na hAbhla - and the Black Pig's Dyke?**

Yes ☐

No ☐

If you wish to propose an alternative instead, please give details here:

**Q4. What are your thoughts on the following ideas which are proposed in the Plan?**

	Don't Like it	No opinion	In favour of it
A Community Council consisting of one seat per group to be set up	<input type="checkbox"/>	<input type="checkbox"/>	<input type="checkbox"/>
A summer festival and Christmas event as rewards for volunteers, and also as community get-togethers	<input type="checkbox"/>	<input type="checkbox"/>	<input type="checkbox"/>
'Ten Minutes a Month' volunteering initiative, asking everyone in the community to do something to help out	<input type="checkbox"/>	<input type="checkbox"/>	<input type="checkbox"/>
Review meetings with County Council to help keep things moving forward	<input type="checkbox"/>	<input type="checkbox"/>	<input type="checkbox"/>
A change from metering to a booking fee for using the community centre	<input type="checkbox"/>	<input type="checkbox"/>	<input type="checkbox"/>
A socialising area, with coffee/ seating, library of books, etc to encourage people to drop by the community centre regularly	<input type="checkbox"/>	<input type="checkbox"/>	<input type="checkbox"/>
More activities for older people	<input type="checkbox"/>	<input type="checkbox"/>	<input type="checkbox"/>
A digital noticeboard, to help promote what's on in the community	<input type="checkbox"/>	<input type="checkbox"/>	<input type="checkbox"/>
A committee to be set up to look into the feasibility of developing a childcare facility in the village	<input type="checkbox"/>	<input type="checkbox"/>	<input type="checkbox"/>
Improve road safety in the village	<input type="checkbox"/>	<input type="checkbox"/>	<input type="checkbox"/>
Find a way to provide post office &			

cash point in the village	<input type="checkbox"/>	<input type="checkbox"/>	<input type="checkbox"/>
Investigate taking in charge of Scotshouse Close	<input type="checkbox"/>	<input type="checkbox"/>	<input type="checkbox"/>
Review progress of Plan with Monaghan Co Co every 3 years	<input type="checkbox"/>	<input type="checkbox"/>	<input type="checkbox"/>

**Q5. Which project(s) should be prioritised?**

**Q6. If you have anything else you'd like to say, here's your chance:**

**If you would like a copy of the final version of the Strategic Plan, when it is available, please supply your contact details here:**

For a hard (paper) copy, supply your name & postal address:

For a pdf (digital) copy, supply your email address:

Your information will only be used to send out the Plan to you and will not be stored.

**Thank you for helping to make Scotshouse a fantastic place to live.**

