



Module 2: Water Management

Unit 3: The Local Authority - What's happening?





Objectives of this presentation

- To explain the tools and measures available to the local authority to protect water
- To discuss how local authorities will address this issue



Main activities of the Local Authority



Water Services are responsible for:



Monaghan Town

- Water Services Investment Programme
- The operation and maintenance of water services
- Implementation of the Drinking Water Regulations
- The supervision of the Group Water Scheme sector
- Water Conservation

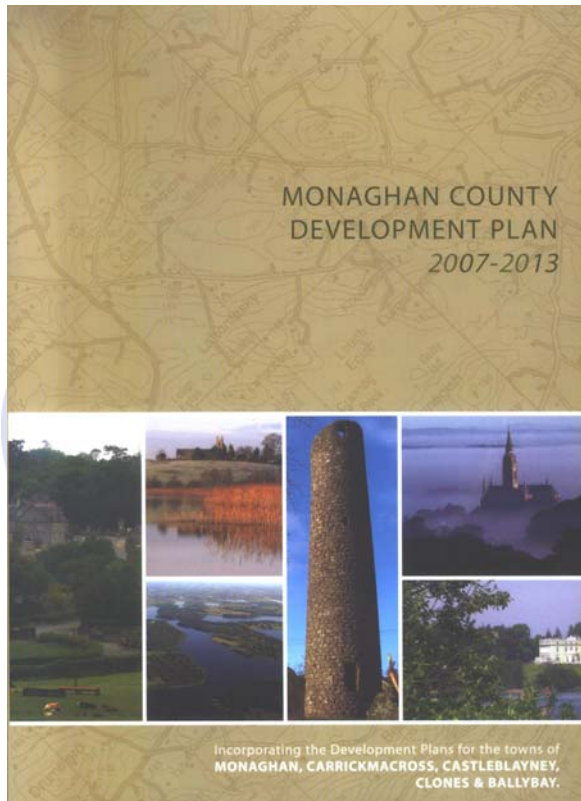


Main activities of the Local Authority



Planning section is responsible for:

- Development control and enforcement
- Preparation of the Development Plan - development of land use policies
- Public consultation
- From 2009 Development Plans must take account of the River Basin Management Plans





Main activities of the Local Authority



The Environment section is responsible for:

- Waste Management Planning
- Implementation of environmental legislation (e.g. licensing and inspection of trade effluents)
- Implementation of measures to protect water
- Preparation and implementation of the River Basin Management Plans
- Environmental awareness activities



Main activities of the Local authority



Local authorities are also involved in:

- Investigation of water pollution complaints
- Farm and business premises surveys and inspections
- Septic tank site assessments
- Awareness raising
- School Visits and Green Schools campaign
- Heritage Officer Activities



The Environment section is also responsible for river and lake monitoring. A national groundwater monitoring programme also exists.

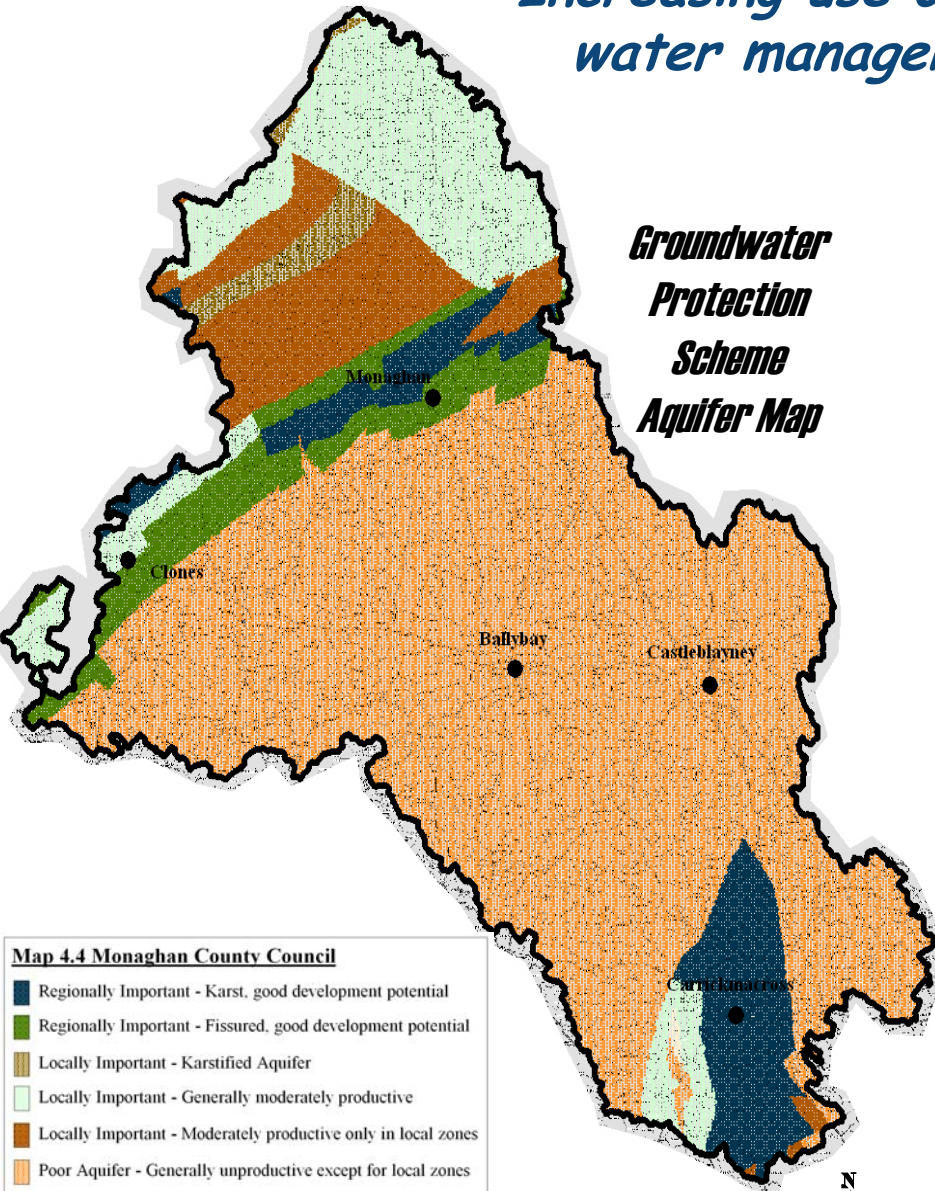




Increasing use of GIS as a water management tool

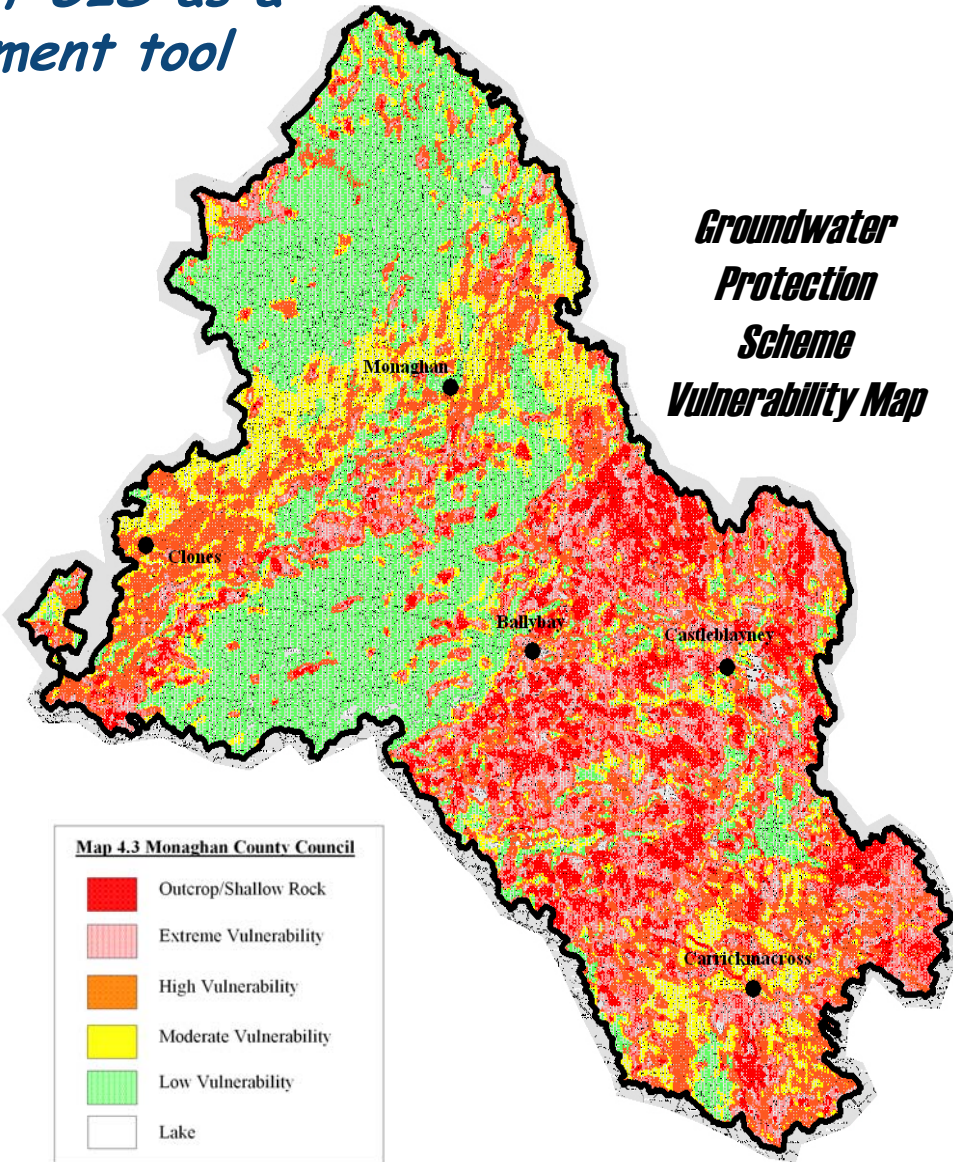
Groundwater Protection Scheme Aquifer Map

Groundwater Protection Scheme Vulnerability Map



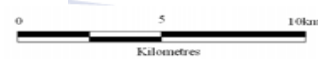
Map 4.4 Monaghan County Council

- Regionally Important - Karst, good development potential
- Regionally Important - Fissured, good development potential
- Locally Important - Karstified Aquifer
- Locally Important - Generally moderately productive
- Locally Important - Moderately productive only in local zones
- Poor Aquifer - Generally unproductive except for local zones
- Poor Aquifer - Generally unproductive



Map 4.3 Monaghan County Council

- Outcrop/Shallow Rock
- Extreme Vulnerability
- High Vulnerability
- Moderate Vulnerability
- Low Vulnerability
- Lake



© Ordnance Survey Ireland. All rights reserved. Licence number 2003/07CCMA/ Monaghan County Council. Data supplied by Geographical Survey of Ireland

For more detailed information please visit www.monaghan.ie



Protecting groundwater



Public Water Supply: Borehole



Group Water Scheme:
Spring well



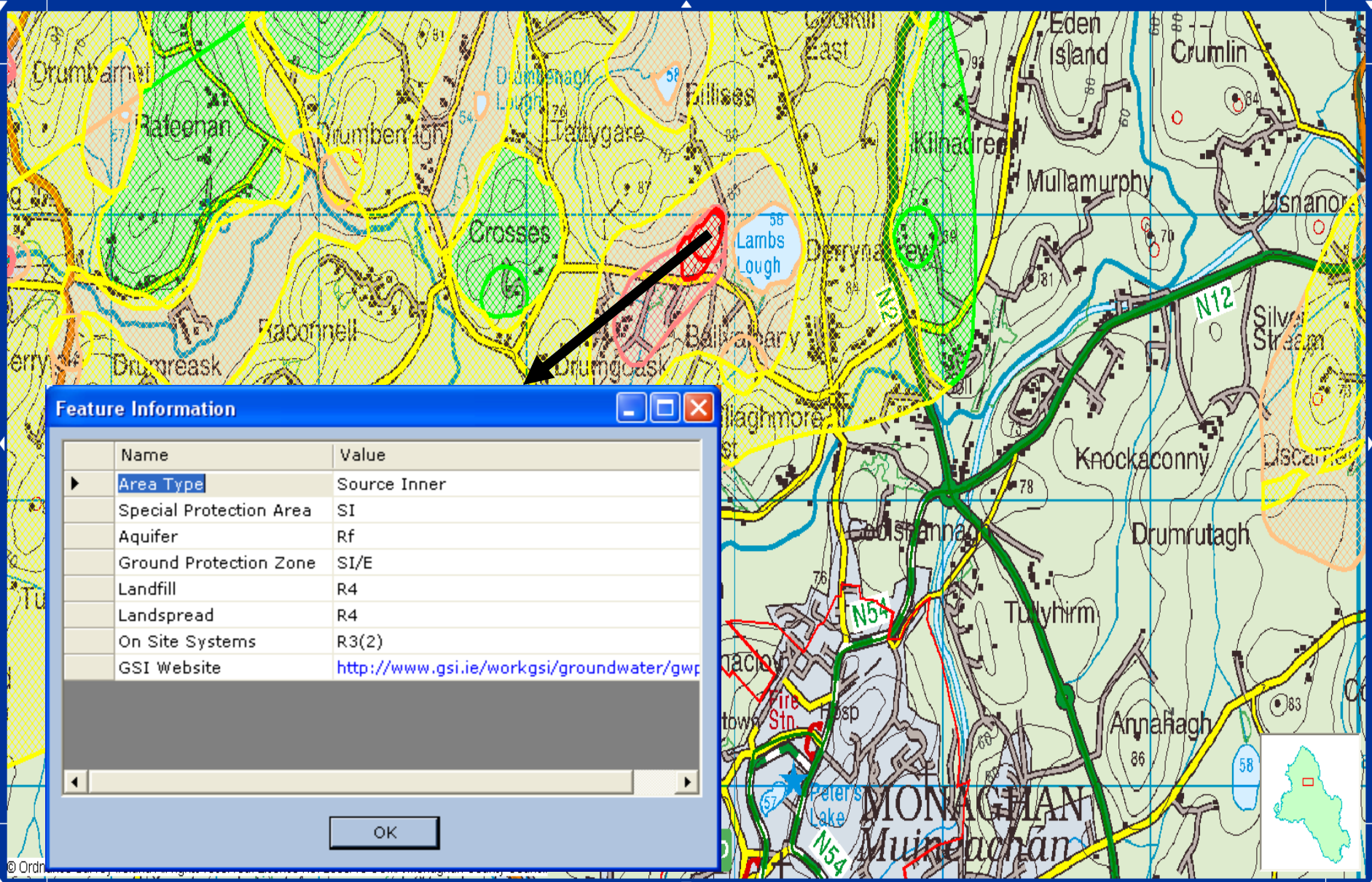
Private Wells (shallow/dug well)



Groundwater Protection Scheme



Groundwater Protection Schemes



Feature Information

Name	Value
Area Type	Source Inner
Special Protection Area	SI
Aquifer	Rf
Ground Protection Zone	SI/E
Landfill	R4
Landsread	R4
On Site Systems	R3(2)
GSI Website	http://www.gsi.ie/workgsi/groundwater/gw

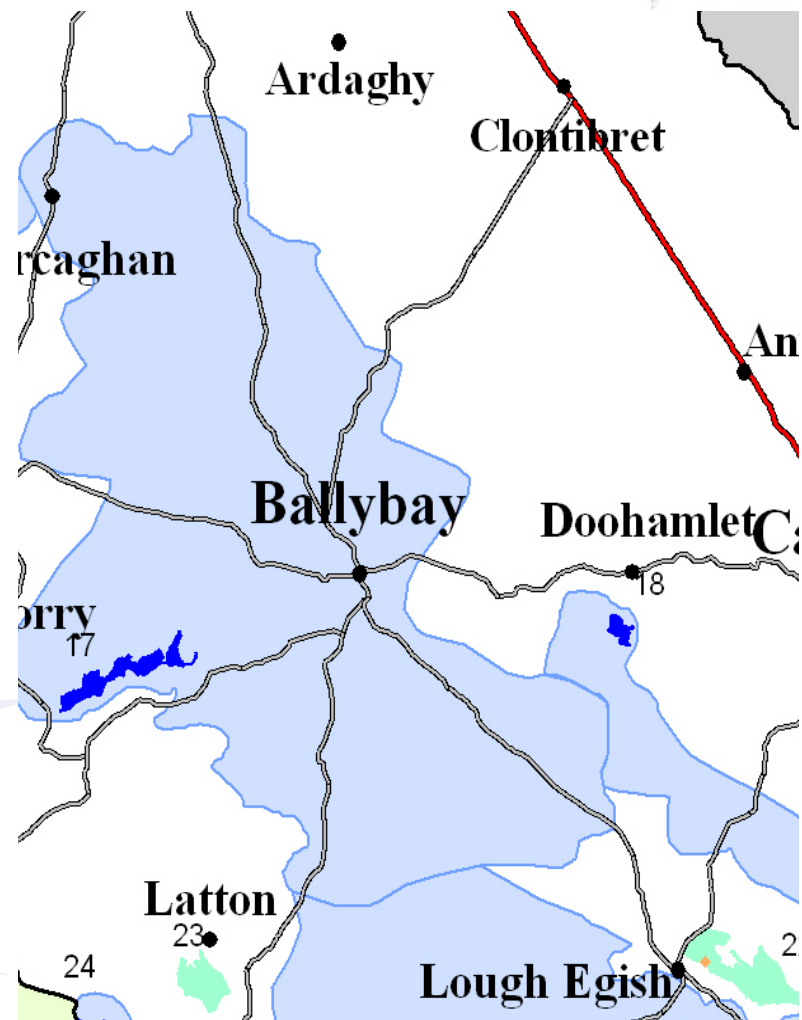
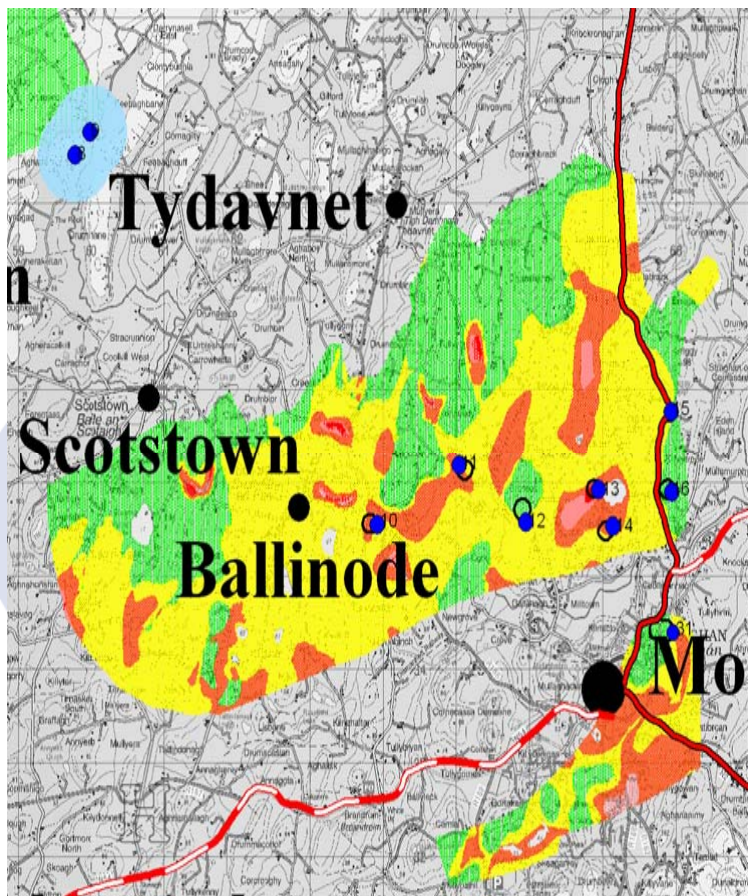
OK



Local authority - water protection work



Proposed Survey Areas





Water pollution and the LAW



The following activities may breach the Water Pollution Act

- Causing or permitting polluting matter to enter waters
- Discharge of trade effluent to surface waters or groundwater without a licence
- Failure to notify a local authority of an accidental discharge which is likely to enter waters or a sewer
- Obstruction of an authorised person



Water pollution incidents and enforcement powers

- Entering and inspecting premises including lands
- Carrying out inspections and taking samples of water or effluent or other matter as may be necessary
- Bringing persons and any necessary equipment onto premises
- Taking direct intervention measures to prevent and abate pollution



Local authority enforcement actions can include:



- Monitoring
- Inspections
- Issue of Warning Letter
- Issue of Legal Notice (giving a time limit to carry out works)
- Legal Notice requiring submission of information
- Prosecution
- Court Order



Consultation and public involvement



- Membership of River Basin District (RBD) Advisory Councils
- Involvement in the RBD Public Authority Forums
- Consultation with Teagasc, IFA, Industry groups, Fisheries Boards, REPS Planners, Agricultural Contractors and the general public
- Participation in Research Projects and Working Groups



Challenges for local authorities



River Basin Management Planning

- Adoption of River Basin Management Plan (s)
- Achieving objectives set out in the WFD
- Enforcement of existing legislation
- Selection of supplementary measures
- Public involvement



Discussion

- water protection and your local authority

How might we improve performance in water management issues?