

# National CFRAMs Programme & Strategic Flood Risk Assessment (SFRA) in County Monaghan

Presentation to Agents Workshop, Manet Suite,  
Hillgrove Hotel  
03 December 2015



# Content of Presentation

## **PART 1**

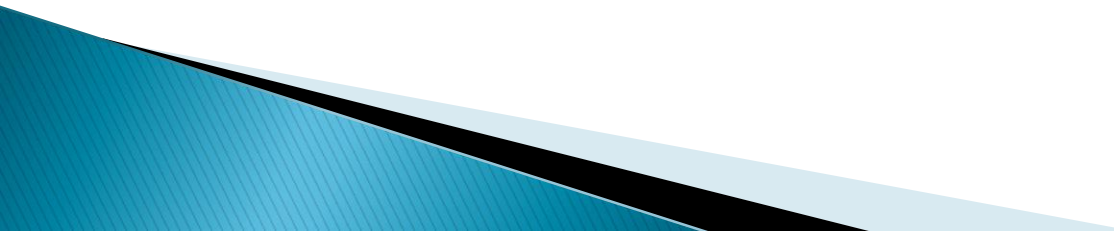
Catchment Flood Risk Assessment and  
Management (**CFRAMs**) Programme

## **PART 2**

Strategic Flood Risk Assessment (SFRA) in  
County Monaghan

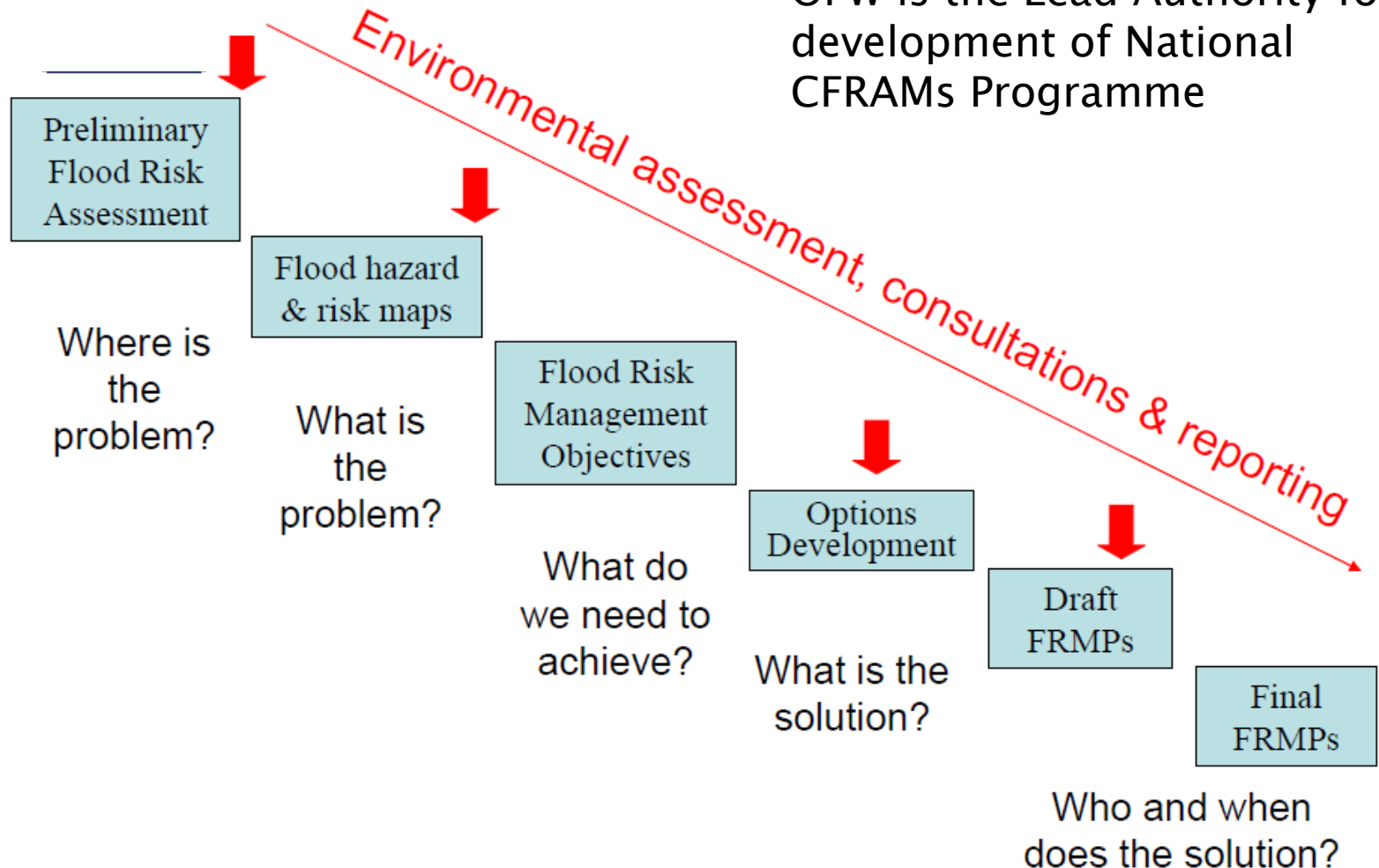


# CFRAMs Programme (background)

- ▶ Flooding is a natural and inevitable part of life in Ireland
  - ▶ Floods pose a risk to human life and wellbeing, cause extensive damage to property, and can often have severe environmental consequences
  - ▶ Flooding may become more frequent and severe due to climate change
  - ▶ Historically, structural or engineered flood protection measures were used, new policy requires more sustainable management with increased use of non-structural and flood impact mitigation measures on a catchment basis
- 

# National CFRAMs Programme Summary – key stages

OPW is the Lead Authority for development of National CFRAMs Programme



# CFRAMs County Monaghan

Areas for Further Assessment (AFAs) – 4 in Total

Preliminary Flood Risk Assessment (PFRA) Maps – 10 areas



In addition to the 4 listed AFAs, there were 6 other areas considered in PFRA in County Monaghan:

5. Aughnakilly
6. Castleblayney
7. Clones
8. Drumgoole
9. Scotshouse
10. Smithborough

# CFRAMs Process – Summary of work by OPW & RPS

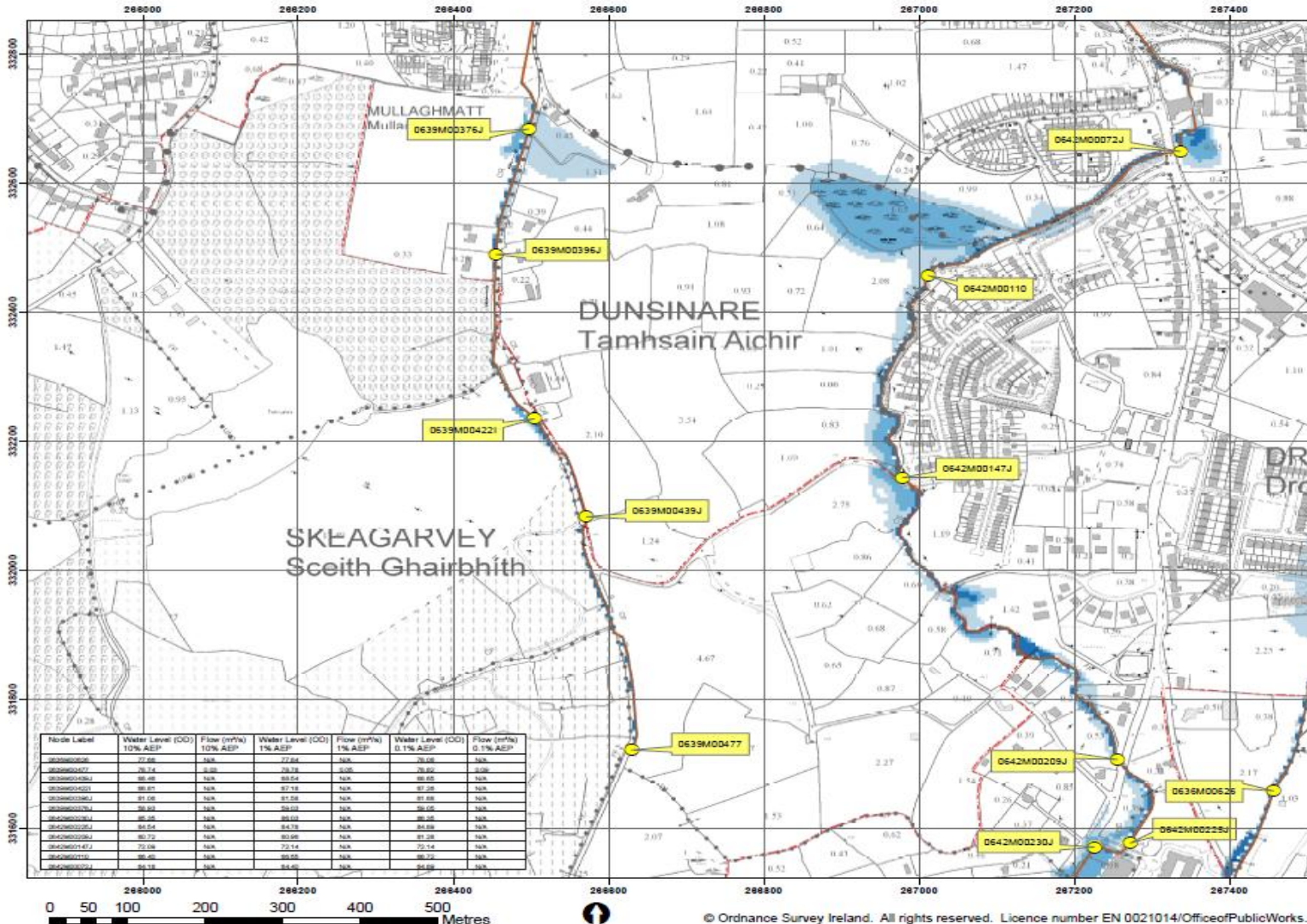
Dates	Activity
▶ 2011–2012	▶ Development of PFRA Maps and verification with Local Authorities & Stakeholders
▶ 2013–2014	▶ Draft Flood Hazard and Risk Maps
▶ Q1 2015	▶ Refinement of number of PFRA areas, maps and development of AFAs (internal consultation)
▶ 20 Nov – 23** Dec 2015	▶ <b>Public Consultation Days</b> on Draft Flood Risk Maps for 4 AFAs in Co. Monaghan
	▶ <b>Statutory Consultation</b> on Draft Flood Risk Maps for 4 AFAs in Co. Monaghan

**\*\*NOTE: Objections to Draft Flood Risk Maps must be made in writing on specific Objection Form before 21 December 2015. Comments on Draft Maps can be made on additional comment form up to 23 December 2015**

# CFRAMs Process – Summary of work by OPW & RPS (cont.)

Dates	Activity
▶ Q1 / Q2 2016	▶ <b>Draft Options Reports</b> (outline of options in dealing with flood risk) for each of the 4 AFAs in County Monaghan
▶ Q2 / Q3 2016	▶ Public Consultation on the Draft Options Reports for AFAs
▶ Q4 2016	▶ Drafting, production and adoption of <b>Flood Risk Management Plans</b> for each of the 4 AFAs in County Monaghan

# Sample of Maps available in Public Consultation – Flood Extent Map



The viewer of this map should refer to the Disclaimer, Guidance Notes and Conditions of Use that accompany this map. This draft map is for consultation purposes only, and should not be used for any other purpose.

**Legend**

- 10% Fluvial AEP Event
- 1% Fluvial AEP Event
- 0.1% Fluvial AEP Event
- Modelled River Centlines
- AFA Extents
- Node Point
- Node Label

**DRAFT**

REV	NOTE	DATE

The Office of Public Works  
Jonathan Swift Drive  
Tullamore  
Co. Wick

Elmwood House  
74 Escher Road  
Ballinacorney  
BT12 9EJ  
t: +44(0) 28 50 977014  
f: +44(0) 28 50 982268  
w: www.rpsgroup.com  
e: rps@rpsgroup.com

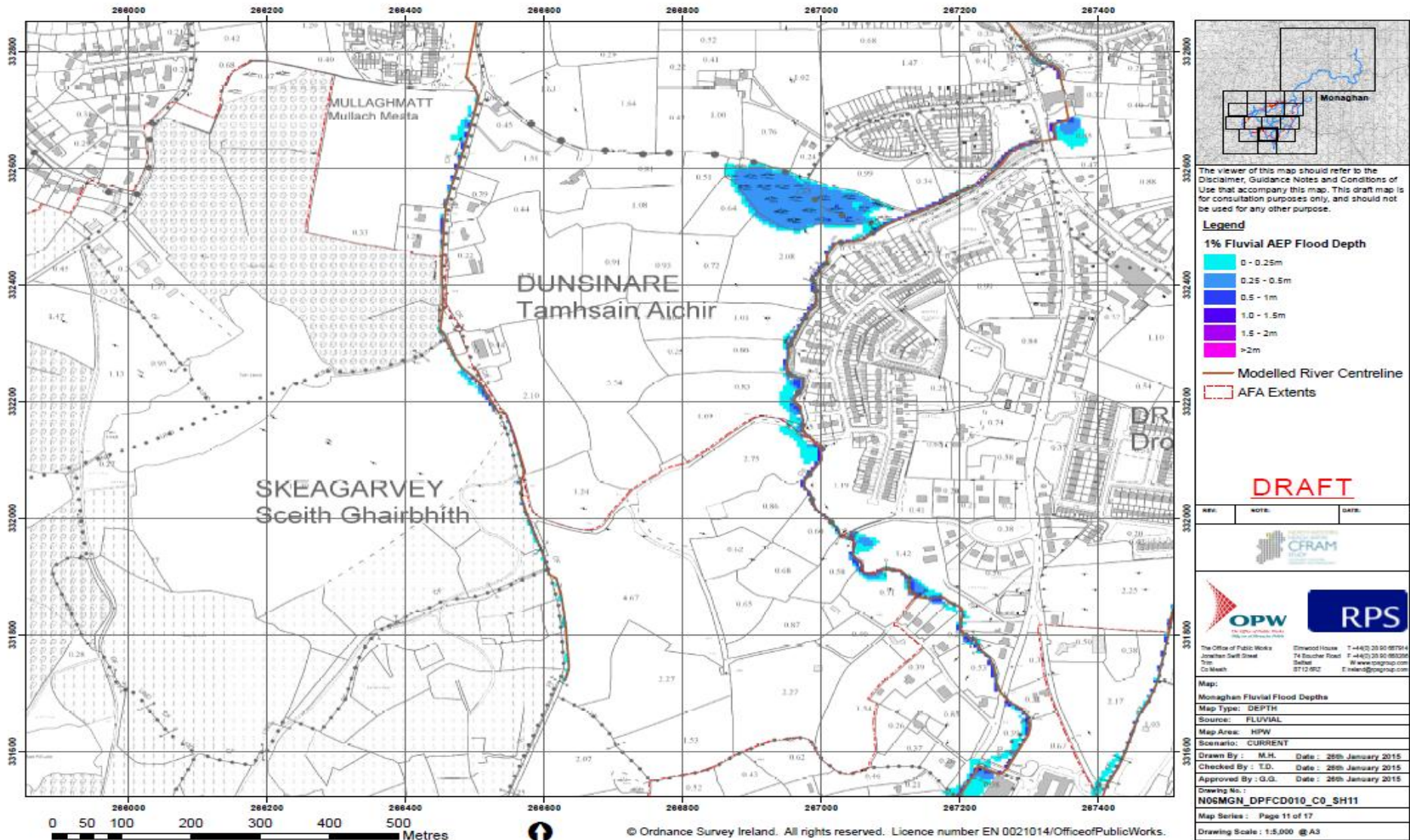
Map:  
Monaghan Fluvial Flood Extents

Map Type:	EXTENT		
Source:	FLUVIAL		
Map Area:	HPW		
Scenario:	CURRENT		
Drawn By:	C.C.	Date:	29th January 2015
Checked By:	T.G.	Date:	29th January 2015
Approved By:	G.G.	Date:	29th January 2015

Drawing No: N05MGN\_EXFCD\_CO\_SH11  
 Map Series: Page 11 of 17  
 Drawing Scale: 1:5,000 @ A3



# Sample of Maps available in Public Consultation – Flood Depth Map



# Further information

Website [www.northwestcframstudy.ie](http://www.northwestcframstudy.ie)  
& [www.neaghbanncframstudy.ie](http://www.neaghbanncframstudy.ie)



NW-NB CFRAM STUDY

KEY PLAYERS

CFRAM PROGRAMME

CONSULTATION EVENTS

DOWNLOADS

HAVE YOUR SAY »

LINKS



GAEILGE



## NORTH WESTERN - NEAGH BANN WEBSITE GOES LIVE

The North Western – Neagh Bann CFRAM Study was commissioned in April 2012. The contract was awarded to RPS Group. The study will run until the end of 2015 when Flood Risk Management [More »](#)



## North Western - Neagh Bann CFRAM Study

The North Western - Neagh Bann Catchment Flood Risk Assessment and Management (CFRAM) Study commenced in the North Western and Neagh Bann districts in April 2012.

Search



## RECENT POSTS



The North Western - Neagh Bann CFRAM Study was commissioned in April 2012. The contract was awarded to RPS

Group. The study will run until the end of 2015 when Flood Risk Management [Read More »](#)

## DOCUMENT LINKS

- SEA & AA Information Leaflet
- Newsletter No. 1
- General information leaflet

# PART 2 – Strategic Flood Risk Assessment in County Monaghan

- ▶ *‘Planning Authorities & An Bord Pleanála are required to have regard to the Guidelines in carrying out their functions under the Planning Acts’.*
- ▶ It is therefore a function of the Local Authority to include flood risk assessment and relevant local policies within the planning policy framework e.g. **The County Development Plan.**
- ▶ **Monaghan CDP 2013–2019** includes Flood Risk Policies but is not currently in compliance with the DECLG Guidelines
- ▶ The SFRA will cover both urban and rural areas of County Monaghan
- ▶ On completion of the SFRA, relevant sections & maps will be introduced to the Monaghan CDP 2013–2019 by way of Section 13 Variation Procedure

## DECLG Section 28 Guidelines

20

The Planning System and Flood Risk Management

Guidelines for Planning Authorities  
November 2009

# Strategic Flood Risk Assessment (SFRA) in County Monaghan – Context

**Monaghan  
SFRA**



Policy Documents / Instruments	Flood Risk Assessment Technique	Decision-making Tools
National Spatial Strategy, National Planning Guidelines	Flood Risk Management Guidelines	n/a
Regional planning guidelines	Regional Flood Risk Appraisal, Catchment Flood Risk Management Plans	Sequential approach, Strategic Environmental Assessment
City / county development plan	Strategic Flood Risk Assessment, Catchment Flood Risk Management Plans	Sequential approach, dev. plan Justification Test, SEA
Local area plan	Strategic Flood Risk Assessment	Sequential approach, dev. plan Justification Test, SEA
Master plan, non-statutory plan, site brief	Site-specific Flood Risk Assessment	Sequential approach, dev. plan Justification Test, SEA / Env. Impact Assessment
Planning application	Site-specific Flood Risk Assessment	Sequential approach, dev. management Justification Test, EIA

Fig. 1.1: Flood risk management and the planning system

# Process and Outputs of an SFRA

- ▶ To provide for an improved understanding of flood risk issues within the development plan and development management process, and to communicate this to a wide range of stakeholders;
- ▶ To produce an assessment of existing flood defence infrastructure and the consequences of failure of that infrastructure and also identification of areas of natural floodplain to be safeguarded;
- ▶ To produce a suitably detailed flood risk assessment, drawing on and extending existing data and information, leading to a suite of flood risk maps that support the application of the sequential approach, in key areas where there may be tension between development pressures and avoidance of flood risk;
- ▶ To inform, where necessary, the application of the Justification Test;
- ▶ To conclude whether measures to deal with flood risks to the area proposed for development can satisfactorily reduce the risks to an acceptable level while not increasing flood risk elsewhere; and
- ▶ To produce guidance on mitigation measures, how surface water should be managed and appropriate criteria to be used in the review of site specific flood risk assessments.

# Key Principles of Flood Risk Management

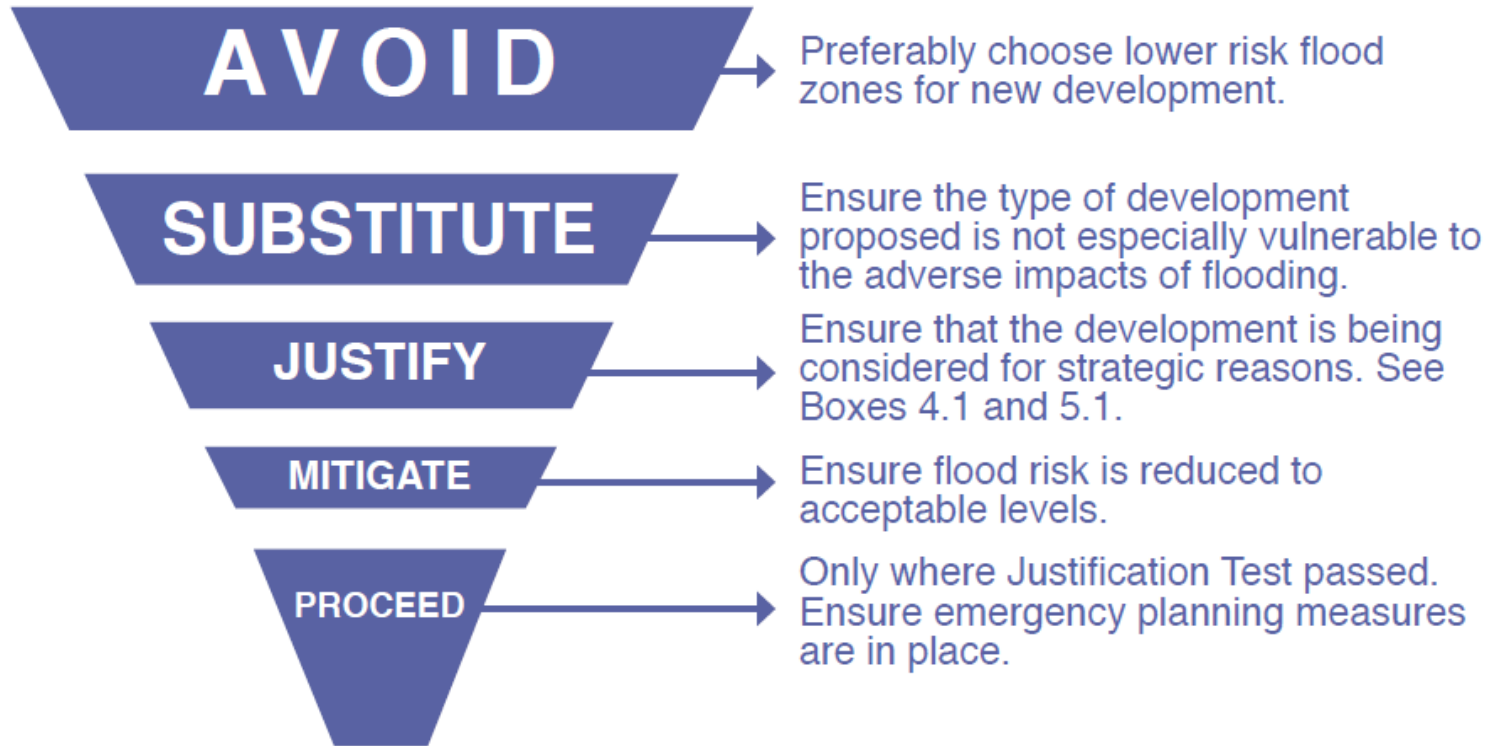


Fig. 3.1: Sequential approach principles in flood risk management

# Key Principles of Flood Risk Management (cont)

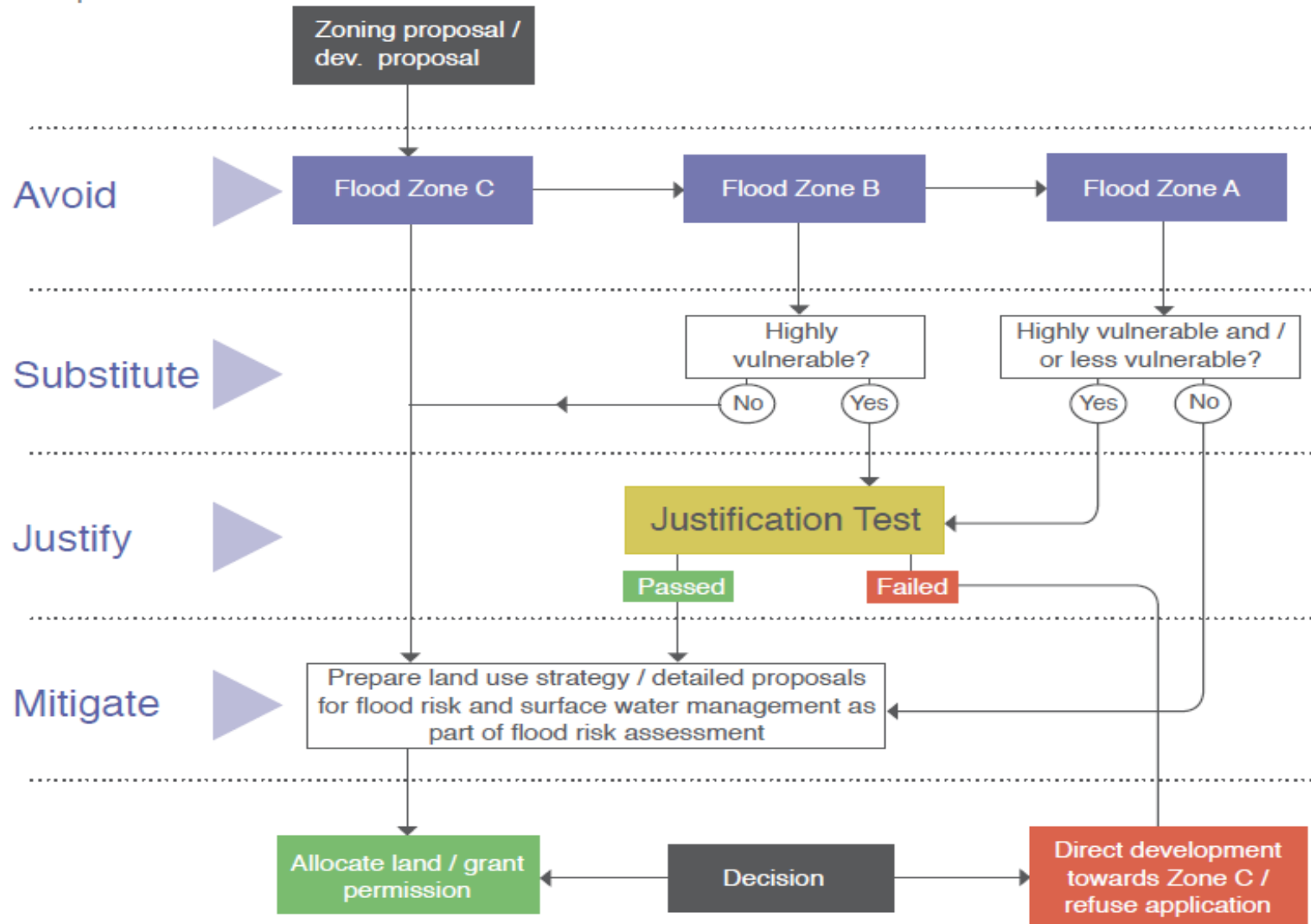


Fig. 3.2: Sequential approach mechanism in the planning process

# Timeline for Development of SFRA in County Monaghan

## Dates

## Activity

- ▶ Aug – Dec 2015
  - ▶ Review of all flood data including historical info, flood map info, websites etc.
  - ▶ Review of Monaghan CDP and existing flood risk policy
  - ▶ Review of LA GIS information
  - ▶ Site surveys on flood risk for all settlements
  - ▶ Drafting SFRA Document
- ▶ Q1 2016
  - ▶ Completion of site surveys and internal verification of county and settlement flood risk maps
  - ▶ Final Draft of SFRA Document for internal review
  - ▶ Draft maps and documents to be presented to CPG & relevant SPCs
  - ▶ Commence process of Section 13 Variation Procedures



# Timeline for Development of SFRA in County Monaghan (cont.)

## Dates

## Activity

- ▶ Q2 2016
  - ▶ Prepare final Draft Maps and SFRA Document for public consultation
  - ▶ Present to CPG/ Relevant SPCs
  - ▶ Publish Draft SFRA for 4–5 week public consultation (including workshops in MDs)
- ▶ Q2/ Q3
  - ▶ Draft Chief Executive Report on Public Consultation and present to LA members
  - ▶ Amend SFRA Maps and Document
  - ▶ Prepare relevant information for inclusion into Monaghan CDP 2013–2019
  - ▶ Present Monaghan CDP 2013–2019 (as amended) for adoption

# Implications for Planning Agents

**Monaghan  
SFRA** →

**Planning  
Agents /  
Architects /  
Hydrologist** →

FRA	Code	Purpose	Responsibility
Regional Flood Risk Appraisal	RFRA	RFRA provide a broad overview of the source and significance of all types of flood risk across a region and also highlighting areas where further more detailed study will be required. At this level, they are an appraisal and not an assessment.	Regional authorities in consultation with the OPW, river basin management bodies and LAs.  CFRAM Study outputs, when available, will be an important and prime input to the appraisal.
Strategic Flood Risk Assessment for development plan and LAP	SFRA	To provide a broad (area-wide) assessment of all types of flood risk to inform strategic land-use planning decisions.  SFRA enable the LA to undertake the sequential approach, including the Justification Test, allocate appropriate sites for development and identify how flood risk can be reduced as part of the development plan process. The level of detail required will differ for county and city development plans.	LAs in consultation with the OPW, and emergency services.  The Flood risk management plan arising from the CFRAM programme will heavily inform the SFRA.  In its absence local authorities may need to commission extensive flood risk assessments, albeit at a strategic level.  OPW will provide advice on the specifications that should be applied.
Site-specific Flood Risk Assessment	Site FRA	To assess all types of flood risk for a new development. FRAs identify the sources of flood risk, the effects of climate change on this, the impact of the development, the effectiveness of flood mitigation and management measures and the residual risks that remain after those measures are put in place. Must be carried out in all areas where flood risk have been identified but level of detail will differ if SFRA at development plan level has been carried out.	Those proposing the development in consultation with the LA and emergency planners.

Table A2: Hierarchy of flood risk assessment

**Pádraig Maguire**  
**A/Senior Executive Planner**  
**Planning and Flood Risk Assessment**  
[pmaguire2@monaghancoco.ie](mailto:pmaguire2@monaghancoco.ie)  
Ext: 467

