

PM1 - Planter Planting - Tree under planting									
Name				Details			Specification		
Code	Image	Species	Common Name	Notes	Ultimate height / spread (m)	Ecological Value	Pot size	Planting Density	% Mix
Evergreen Grasses/ferns (40%)									
Ble		Blechnum spicant	Hard fern	Flowers: - Type: Tufted grass Foliage: Evergreen Conditions: Full or partial shade	Form: Clump forming H: 0.5 S: 0.45		2L pot	9 pots per m2	20
Luz		Luzula nivea	Snowy woodrush	Flowers: Jan-Jul Type: Clumping grass Foliage: Evergreen Conditions: Full or partial shade	Form: Clump forming H: 0.6 S: 0.45		2L pot	9 pots per m2	20
Matrix/filler/ground cover plants (60%)									
HeA		Helleborus argutifolius	Corsican hellebore	Flowers: Jan-Mar Type: Perennial Foliage: Evergreen Conditions: Partial shade, tolerates full sun	Form: Clump forming H: 0.9 S: 0.5		2L pot	9 pots per m2	20
Lir		Liriope Muscari variegata	Lily turf	Flowers: Aug - Nov Type: Perennial Foliage: Evergreen Conditions: Full sun, partial shade	Form: Clump/spreading H: 0.3 S: 0.45		2L pot	9 pots per m2	20
Ger		Geranium x oxianianum 'Katherine Adele'	Cranesbill	Flowers: May-Oct Type: Perennial Foliage: Evergreen Conditions: Full sun or partial shade	Form: Clump/spreading H: 0.5 S: 0.35		2L pot	9 pots per m2	20
Bulbs (bulbs to be planted across 40% of planting area)									
Gn		Galanthus nivalis	common snowdrop	Flowers: Winter Type: Perennial bulb Foliage: Deciduous Conditions: Partial Shade Note: Plant under deciduous trees	Form: Columnar H: 0.15 S: 0.1		Planting depth: 100mm	50 bulbs per m2	33
Np		Narcissus 'Barrett Browning'	Small-Cupped Daffodil	Flowers: Winter / Early spring Type: Perennial bulb Foliage: Deciduous Conditions: Full sun or partial shade	Form: Narrow clump H: 0.35 S: 0.1		Planting depth: 100mm	50 bulbs per m2	33
Cro		Cyclamen hederifolium	Ivy leaved cyclamen	Flowers: Oct/Nov Type: Corm Foliage: Deciduous Conditions: Full sun or partial shade	Form: Clump H: 0.12 S: 0.15		Planting depth: 100mm	50 bulbs per m2	33

S1 sheet

Shrub mix 01

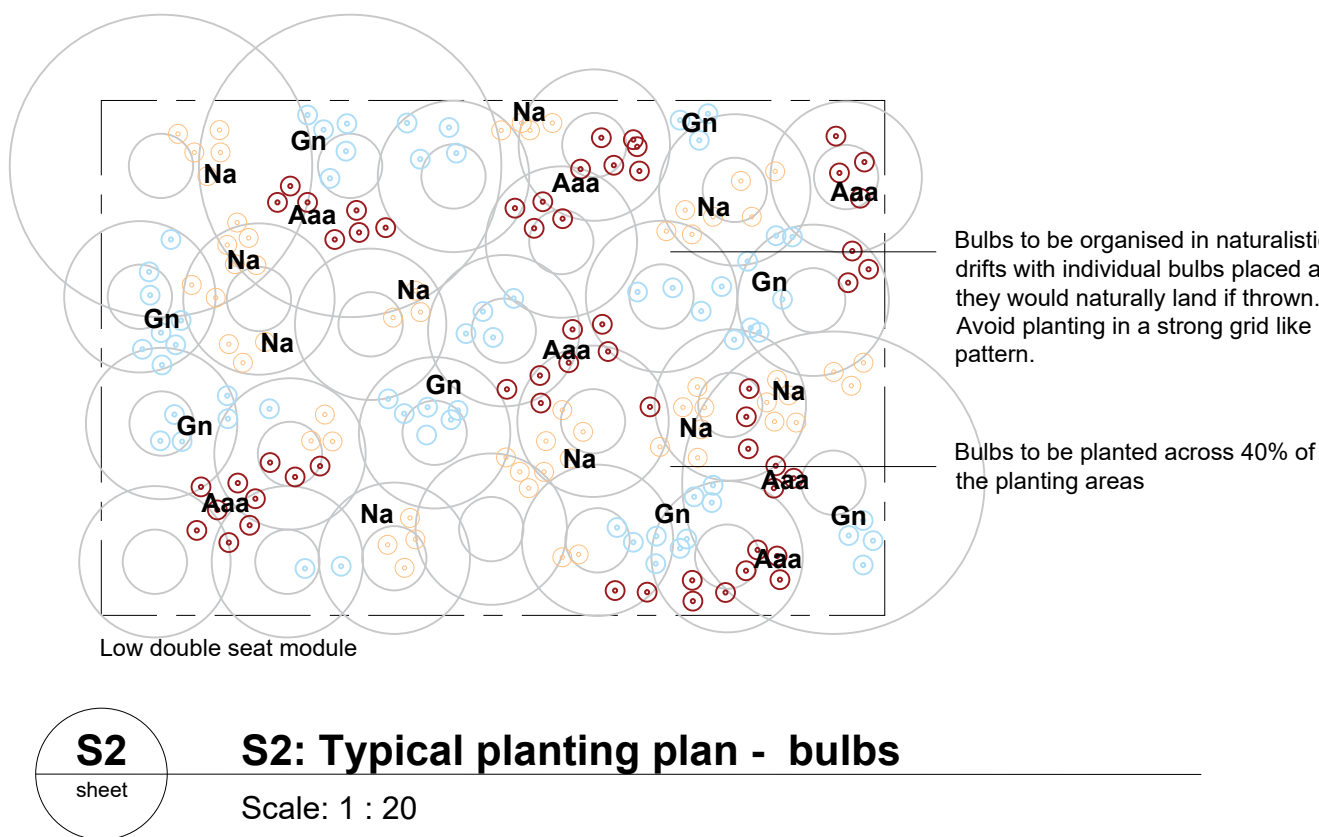
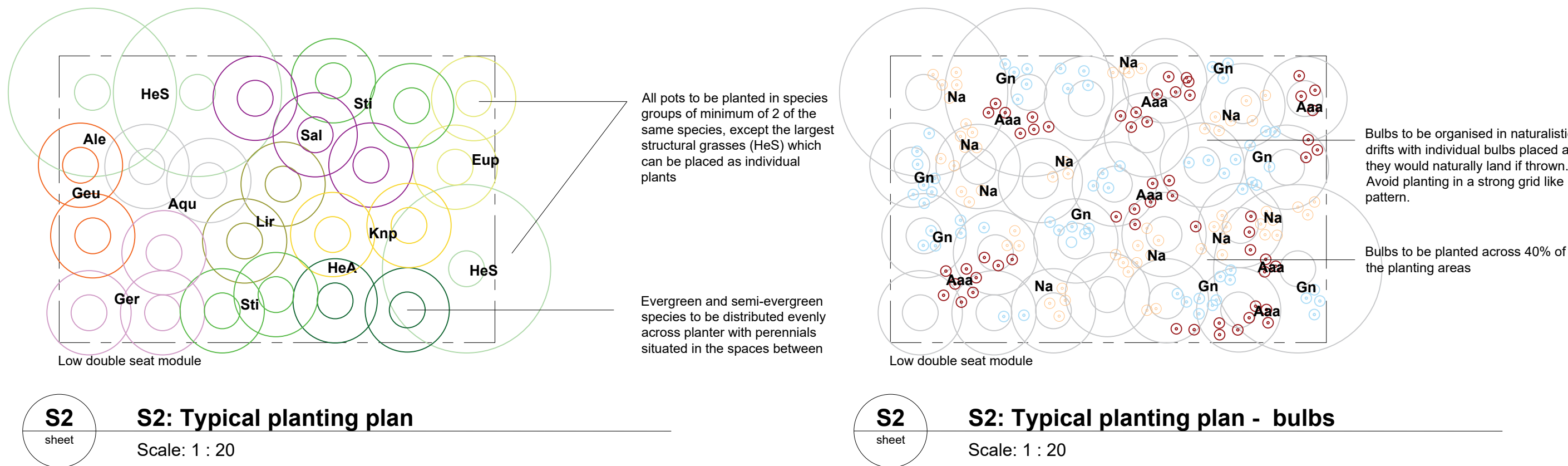
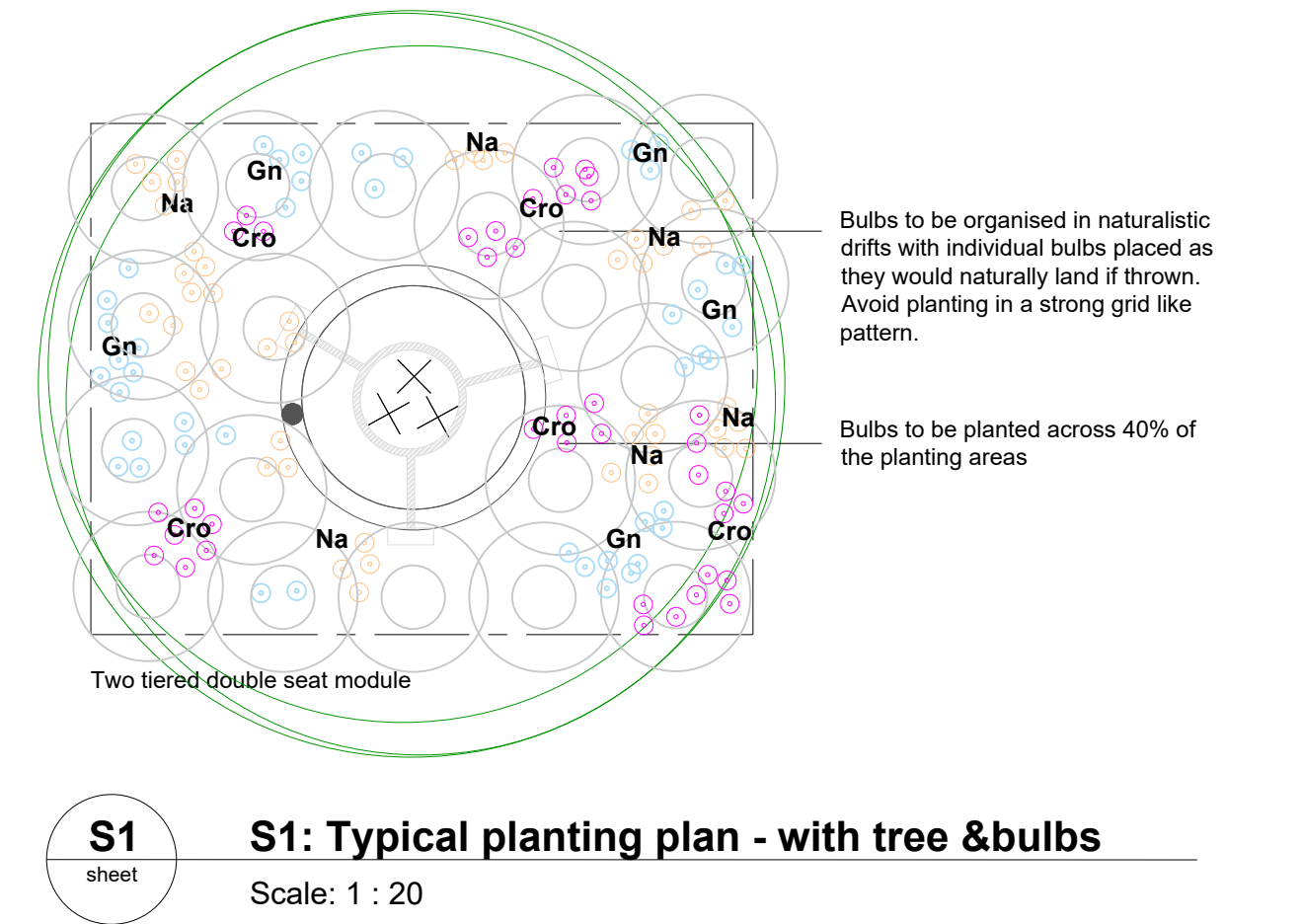
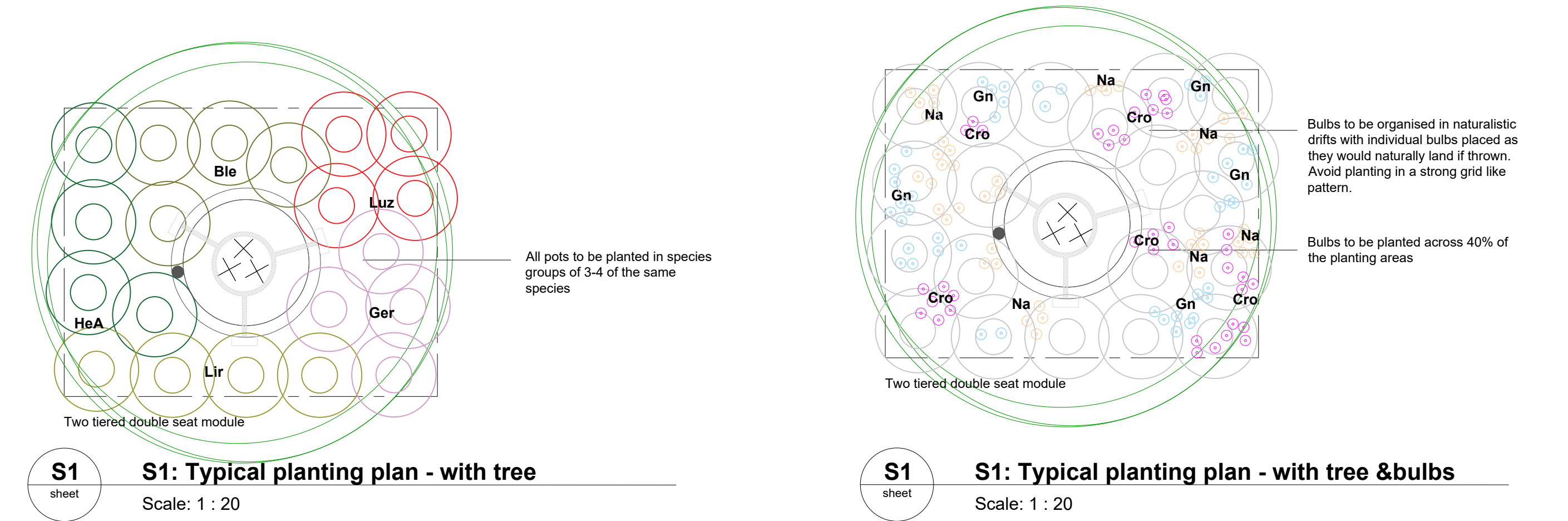
Scale: 1 : 20

S2 - Planter Planting - Structural grasses and perennials									
Name				Details			Specification		
Code	Image	Species	Common Name	Notes	Ultimate height / spread (m)	Ecological Value	Pot size	Planting Density	% Mix
Structural Grasses (20%)									
HeS		Helictotrichon sempervirens	Blue Oat Grass	Flowers: June - July Type: Evergreen grass Foliage: Evergreen Conditions: Full sun, tolerates light shade	Form: Tufted H: 1.4 S: 0.6		2L pot	4 pots per m2	10
Sti		Stipa tenuissima	Pony tails	Flowers: Jun-Sep Type: tufted Foliage: Semi-Evergreen Conditions: Full sun	Form: Clump forming H: 0.6 S: 0.3		2L pot	9 pots per m2	10
Matrix/filler/ground cover plants (40%)									
HeA		Helleborus argutifolius	Corsican hellebore	Flowers: Jan-Mar Type: Perennial Foliage: Evergreen Conditions: Partial shade, tolerates full sun	Form: Clump forming H: 0.9 S: 0.5		2L pot	9 pots per m2	10
Lir		Liriope Muscari variegata	Lily turf	Flowers: Aug - Nov Type: Perennial Foliage: Evergreen Conditions: Full sun, partial shade	Form: Clump/spreading H: 0.3 S: 0.45		2L pot	9 pots per m2	10
Ger		Geranium x oxianianum 'Katherine Adele'	Cranesbill	Flowers: May-Oct Type: Perennial Foliage: Evergreen Conditions: Full sun or partial shade	Form: Clump/spreading H: 0.5 S: 0.35		2L pot	9 pots per m2	10
Eup		Euphorbia seguieriana subsp. Nicotiana	Spurge	Flowers: May-Sep Type: Perennial Foliage: Semi-evergreen Conditions: Full sun	Form: Clump forming H: 0.5 S: 0.45	Insects and pollinators	2L pot	9 pots per m2	10
Flowering perennials / seasonal interest (40%)									
Aqu		Aquilegia vulgaris var. stellata 'White Barlow'	Columbine 'White Barlow'	Flowers: May-Jun Type: Perennial Foliage: Deciduous Conditions: Full sun or partial shade	Form: Upright H: 0.9 S: 0.45		2L pot	9 pots per m2	10
Sal		Salvia nemorosa 'Caradonna'	Balkan dary	Flowers: Jun - Oct Type: Perennial Foliage: Deciduous Conditions: Full sun or partial shade	Form: Clump forming H: 0.5 S: 0.3		2L pot	9 pots per m2	10
Geu		Geum 'Princes Juliana'	Avens	Flowers: Jun - Oct Type: Perennial Foliage: Deciduous Conditions: Full sun	Form: Clump forming H: 0.5 S: 0.3		2L pot	9 pots per m2	10
Knp		Kniphofia 'Bees Lemon'	Red hot poker	Flowers: Aug-Sep Type: Perennial Foliage: Deciduous Conditions: Full sun	Form: Clump forming H: 1 S: 0.6		2L pot	9 pots per m2	10
Bulbs (bulbs to be planted across 40% of planting area)									
Gn		Galanthus nivalis	common snowdrop	Flowers: Winter Type: perennial bulb Foliage: Deciduous Conditions: Partial Shade Note: Plant under deciduous trees	Form: Columnar H: 0.15 S: 0.1		Planting depth: 100mm	50 bulbs per m2	33
Np		Narcissus 'Barrett Browning'	Small-Cupped Daffodil	Flowers: Winter / Early spring Type: perennial bulb Foliage: Deciduous Conditions: Full sun or partial shade	Form: Narrow clump H: 0.35 S: 0.1		Planting depth: 100mm	50 bulbs per m2	33
Aaa		Allium sphaerocephalon	Drumstick Allium	Flowers: Jul/Aug Type: Perennial bulb Foliage: Deciduous Conditions: Full sun Note: Plant away from shaded canopies	Form: Tuft H: 0.08 S: 0.9		Planting depth: 100mm	50 bulbs per m2	33

S2 sheet

Shrub mix 2

Scale: 1 : 20



- NOTES
1. This drawing is to be read in conjunction with all other drawings and specifications.
  2. Do not scale off this drawing. Written dimensions to be taken only.
  3. Any discrepancies found between this drawing and other drawings and specifications in the construction documents must be referred to the Landscape Architect prior to work commencing.
  4. This drawing must not be copied in whole or in part without prior written consent of Optimised Environments Ltd.
  5. Survey information is based upon aspect surveyors Topographical as Survey.

KEY PLAN

01	Issued for Planning	nt	29.11.24
-	First Issue - Issued for information	nt	09.08.24
Issue	Revision	Initial	Date

open

optimised environments

optimised environments Ltd

EDINBURGH 2nd Floor | Quatermile Two | 2 Lister Square | Edinburgh | EH3 9GL  
t 0131 221 5920 w optimisedenvironments.com

LONDON Unit 6 | 36-42 New Inn Yard | London | EC2A 3EY  
t 0203 994 4022 w optimisedenvironments.com

MANCHESTER 13 Swan Street | Manchester | M4 5JZ  
t 0161 696 7500 w optimisedenvironments.com

Optimised Environments Ltd. Registered in Scotland. C120062  
Registered Address: 2nd Floor | Quatermile Two | 2 Lister Square | Edinburgh | EH3 9GL

Client

Monaghan County Council

Project

Dublin Street North

Monaghan

Drawing Title

DETAILS

Soft Landscape Planting 01

Scale Bar

0.2m 0.4m 0.6m 0.8m 1.0m

Scale: 1:20@A1 Date: AUGUST 2024

By: bs Status: PLANNING

Checked: nt Approved: bp

Drawing Number DBL-OPE-ZZ-XX-DR-L-902201 Rev 01