

INTRODUCTION

Guide to Emerging Concepts Consultation

Welcome to the Lough Muckno & Environs Masterplan and Development Framework – Emerging Concepts Consultation Presentation.

These boards showcase emerging proposals for Lough Muckno, shaped through a robust process of analysis, research, design, and stakeholder consultation.

The proposals respond carefully to the unique character of the local environment and reflect valuable community input. They seek to unlock the full potential of Lough Muckno’s natural and built heritage, enhancing Castleblayney as a vibrant, sustainable, and attractive place.

We value your feedback as we continue to refine these concepts. The delivery of projects will be progressed on a phased basis, supported by a range of funding opportunities as available.



BOARDS GUIDE:

- Board 1 – Introduction
- Board 2 – Vision, Strategy and Themes
- Board 3 – Key Project 1: Biodiversity, Water Quality and Landscape Enhancement; introduction to Hope Castle Cluster and Projects 2–4.
- Board 4 – Key Project 2: Hope Castle Renewal: Café, Orientation and Short-let Accommodation
- Board 5 – Hope Castle cont’d; Key Project 3: Walled Garden and Key Project 4: Stable Block
- Board 6 – Key Project 5: Beach, Waterfront & Swimming; Key Project 6 & 7: White Island & Adventure Centre; Key Project 8: Black Island Trails & Adventure Area
- Board 7 – Black Island cont’d; Key Project 9 Muckno Street Regeneration, Anglers Hub, Access & Parking.
- Board 8 – Key Project 10: Concra Wood G.C; Key Project 11 : Lakeside Trail; Key Project 12: Way finding and Interpretation
- Board 9 - Policy & Management Structures; Next Steps
- Board 10 – Consultation Results

We need your feedback – have we got it right? Do you have comments about any of the proposals?

Please read the boards and ask project staff for assistance if needed.

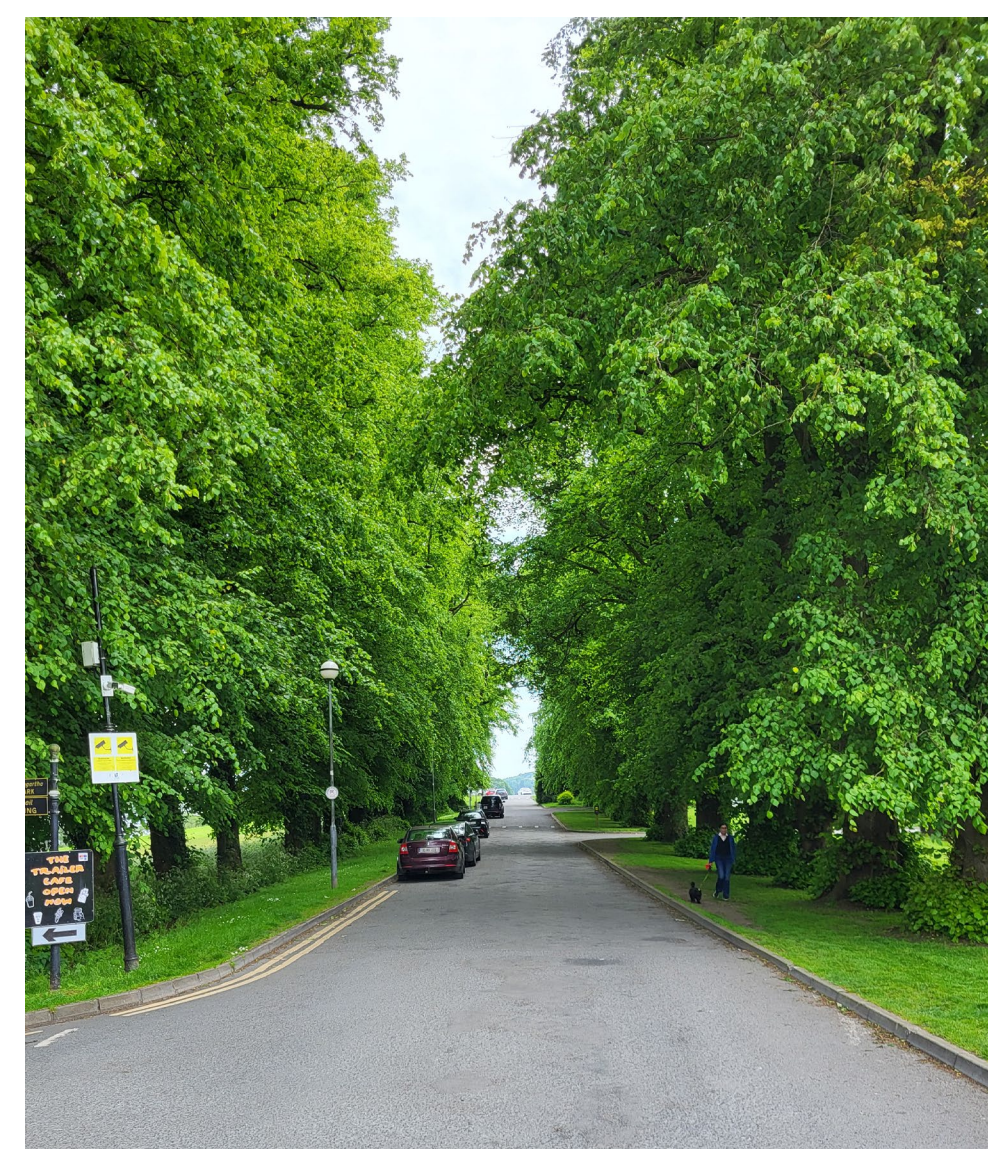
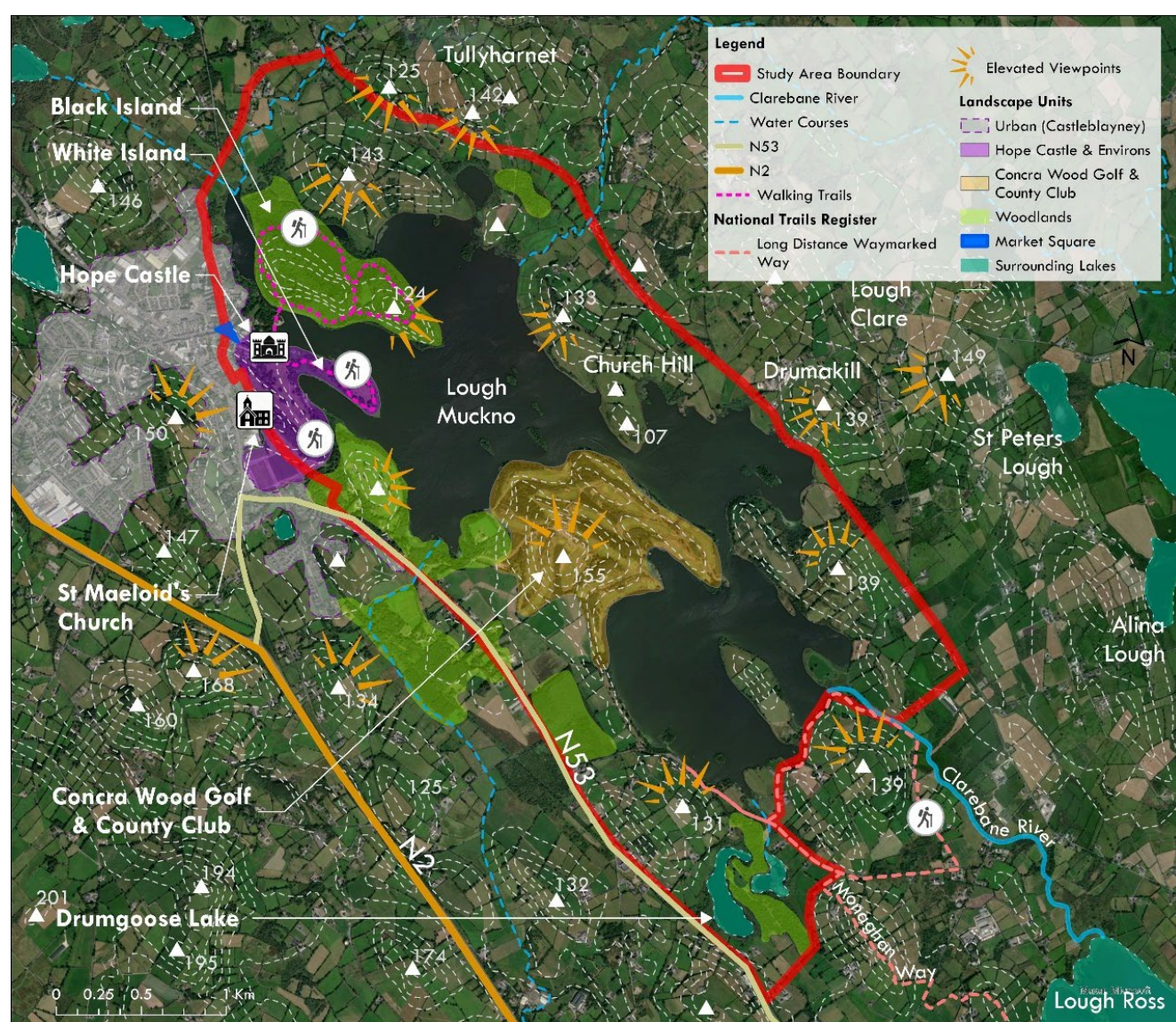
Please complete a feedback sheet or the online questionnaire (see QR Code).

The boards will also be available on the project website:

monaghan.ie/planning/lough-muckno-and-environs-masterplan/

or email: mucknoplan@csrlandplan.ie

Thank you for your time.



Project Process

The Master Plan will be subjected to environmental assessments and must balance conservation of natural landscapes with responsible development, ensuring that the unique character of the area is preserved while accommodating future needs.

Phase 1: Situation Analysis

- Stage 1: site visits, market research, engagement
- Stage 2: ongoing market research, key reports analysis, key findings
- Stage 3: emerging concept, vision and projects

Phase 2: Draft Masterplan

- Stage 4: Prepare draft Masterplan, refine concept and delivery framework
- SEA and AA

Lough Muckno Masterplan and Delivery Framework 2027-2037

MASTERPLAN FRAMEWORK

Vision, Strategy, Themes

A Shared Vision

Ensure Lough Muckno evolves sustainably as a local amenity and exemplar visitor destination, supporting Castleblayney's vitality while safeguarding and enhancing natural, built and cultural heritage and providing recreation and cultural experiences.

Strategic Imperatives

Strategic imperatives include:

- Setting out an **Ambitious** environmental vision that protects and enhances biodiversity.
- **Renewing Hope Castle** and its outbuildings, recreating their important role in the landscape and identifying sustainable uses.
- Integrating a range of **activities and recreational uses** in the study area that build on existing and the opportunity and potential of Lough Muckno
- Ensuring the **town benefits** socially economically from the plan - fostering economic growth through tourism and recreation.
- Setting out an appropriate **management structure** that reflects the varied interests in the study area - MCC, local landowners, local community and business and other partners.
- Articulating the **Unique Features** for Lough Muckno

Masterplan Themes

Theme A: Safeguard and enhance natural heritage

Theme B: Conserve, renew and revive Lough Muckno's built and cultural heritage.

Theme C: Deliver a high-quality user experience and supporting facilities

Theme D: Support the long-term economic, social and community vitality of Castleblayney

Theme E: Provide an effective governance and coordination framework

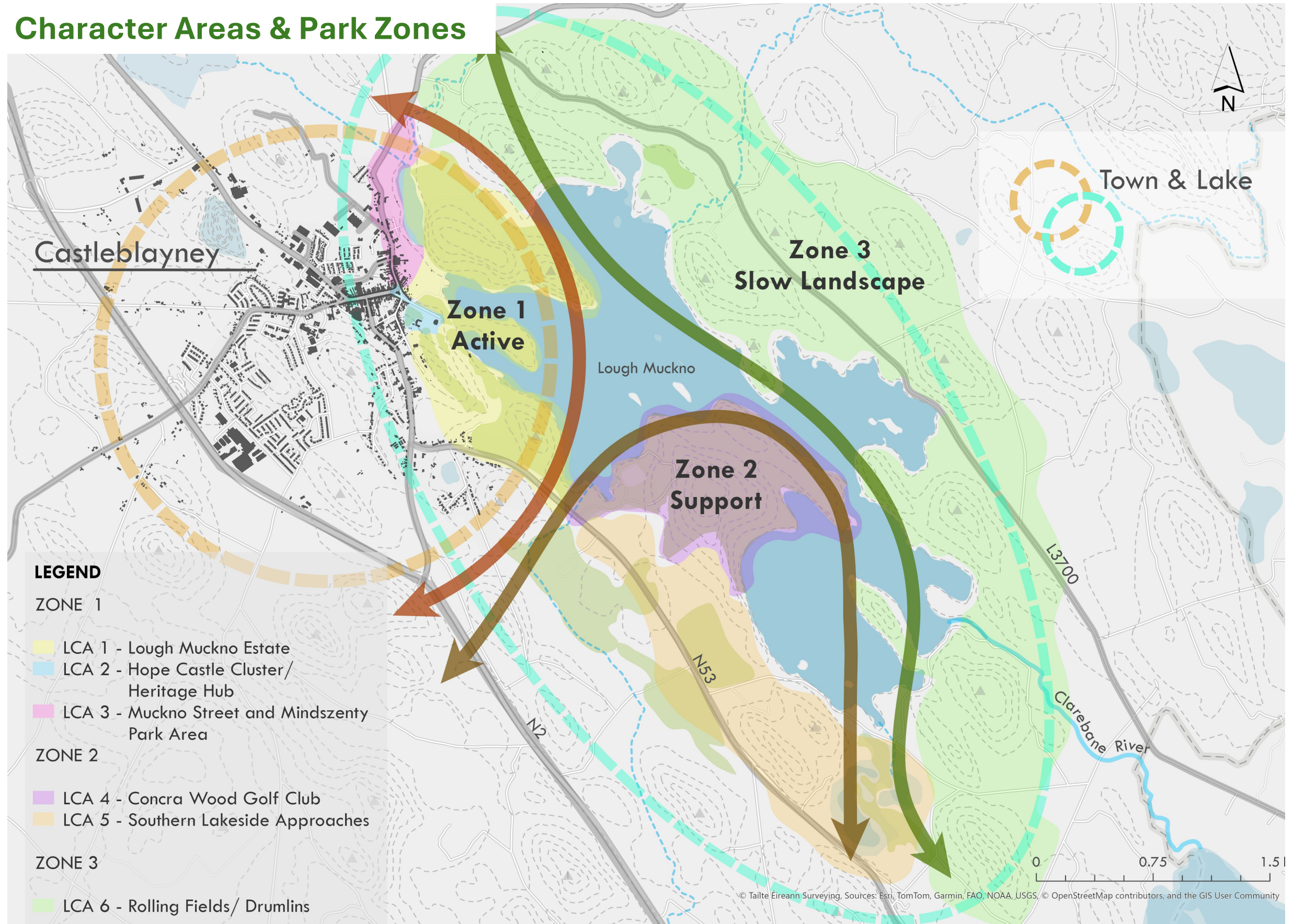
Proposals

These build on the traditional attractions of Lough Muckno & its natural/cultural Assets:

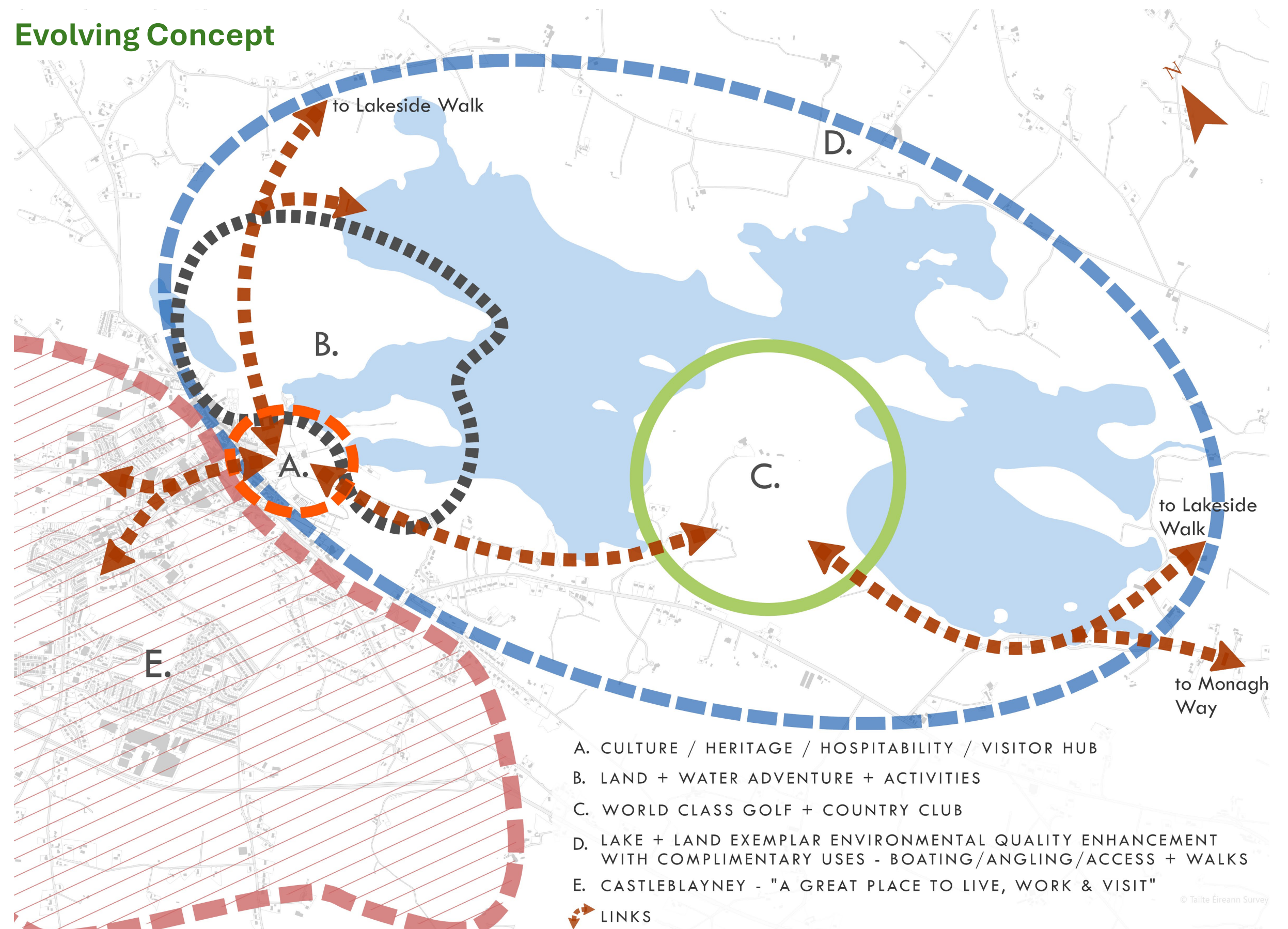
- Protect, manage and enhance the **Natural Environment** of Lough Muckno and its **Cultural Heritage**.
- **Hope Castle** – adapt upper floors of Hope Castle for distinctive short-let accommodation complementing stable / laundry block holiday lets and proposed café / restaurant and reception / exhibition spaces on ground floor.
- **Walled Garden** – restore legibility and structure of walled garden providing garden areas and a large outdoor room event space
- Develop a unique **Lakeside Bathing facility/resort**
- Develop the existing **Adventure Centre** as water and countryside activity destination
- **Angling** – A tried and tested draw to Muckno – provide superlative facilities and accommodation
- **Concra Golf Club** – World class golf needs accommodation facilities on a par.
- Enhance **Access** to lakeside environment with walks and trails, boating and interpretation
- Investigate the long-term feasibility of creating an iconic experience - **Lakeside-Treetop walk** – that complements and celebrates Lough Muckno landscape and lake
- Engage with the **community of Castleblayney** in developing this vision and ensuring the town derives value and benefit

Key Projects are mapped opposite and set out below.

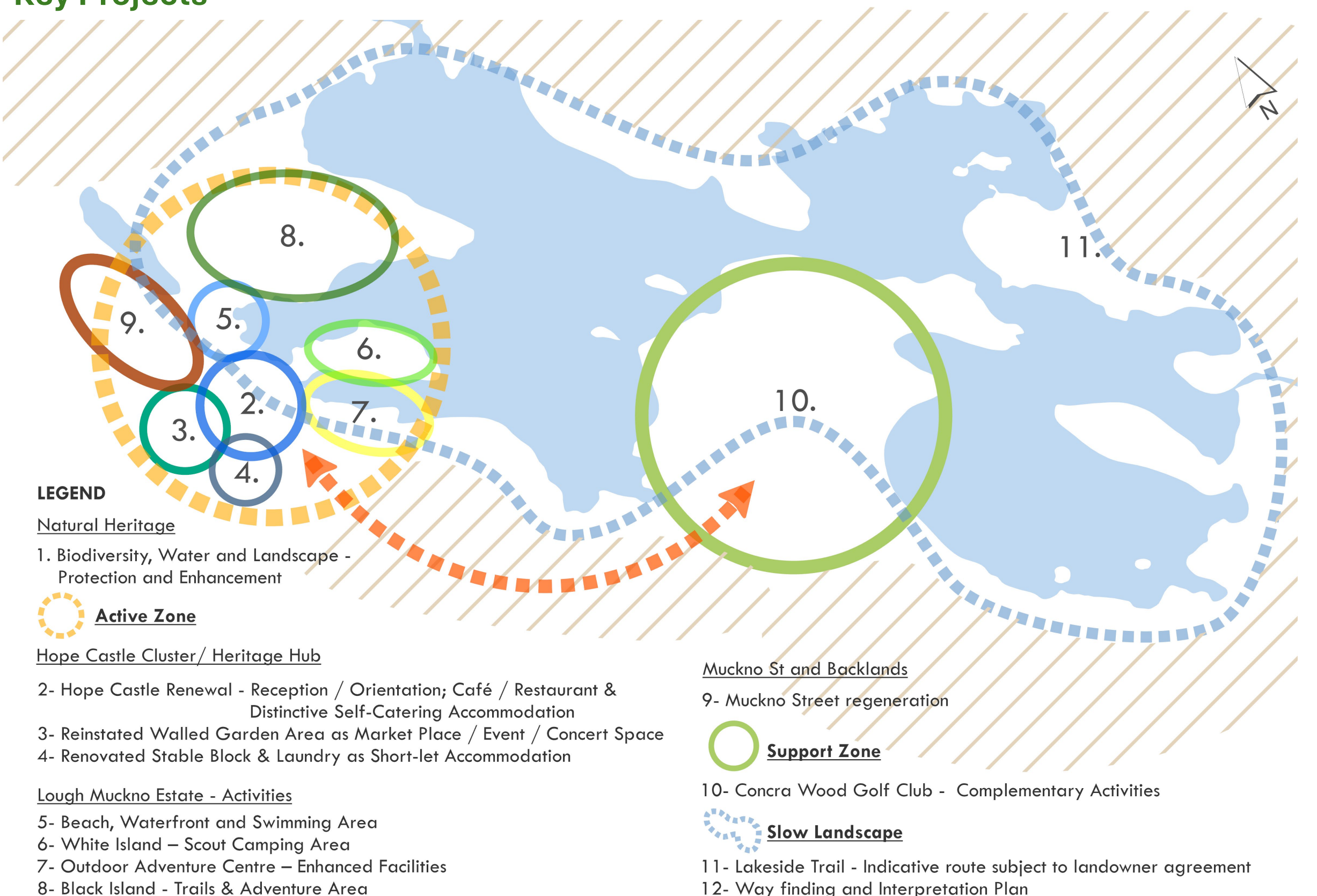
Character Areas & Park Zones



Evolving Concept



Key Projects



MASTERPLAN FRAMEWORK

Key Projects

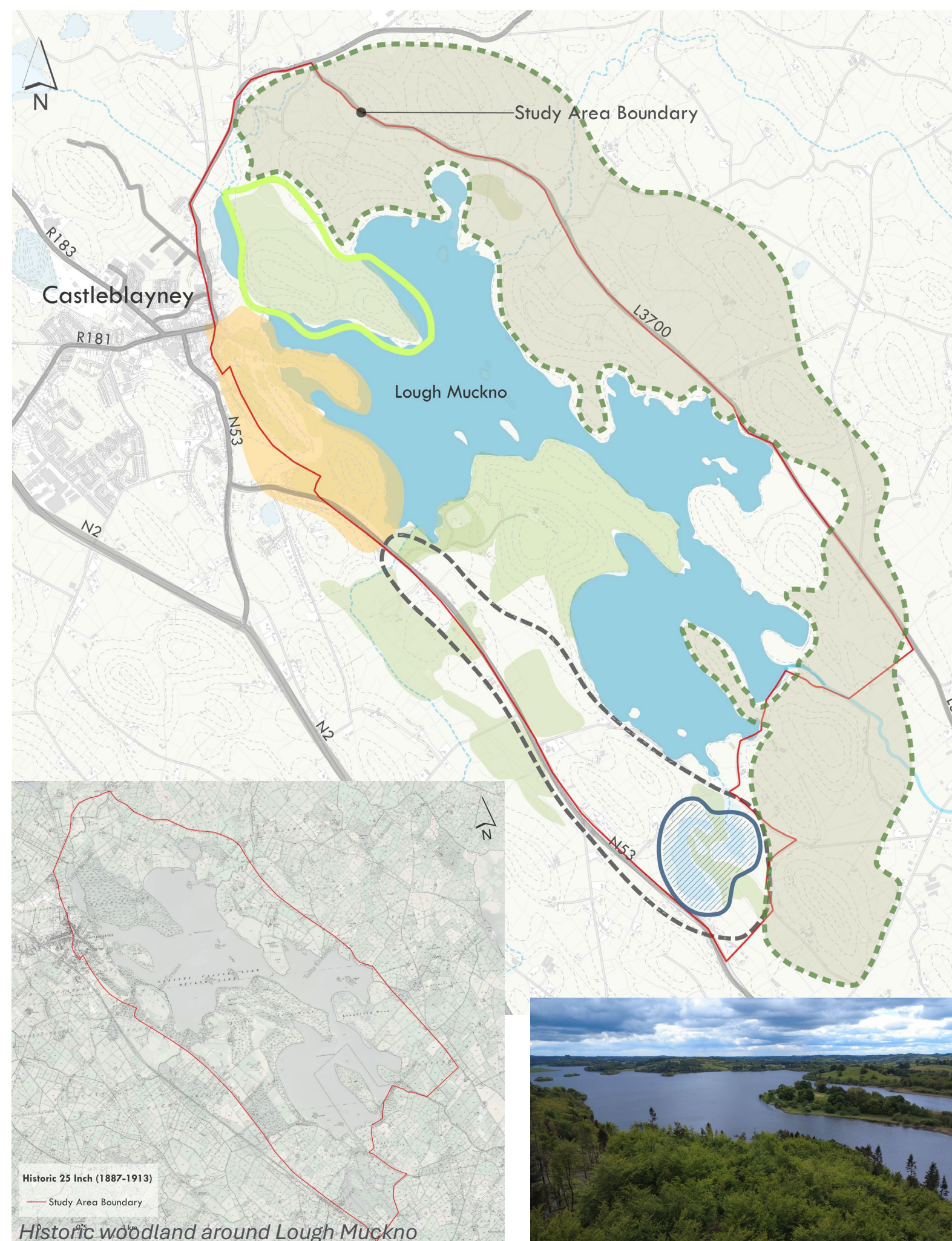
Key Project 1: Biodiversity, Water Quality & Landscape Enhancement

Adopt an ambitious policy of **Biodiversity Net Gain (BNG)** through habitat protection, green infrastructure initiatives and new habitat creation and habitat diversification.

Develop a **High Nature Value (HNV) programme and Biodiversity Management Plan** for the study area to enhance ecology, habitat and ecosystem services /environmental quality whilst accommodating new uses and increasing recreation value. Establish measurable targets and seek ambitious Biodiversity Net Gain (BNG) over the lifetime of the project

Seek to raise Lough Muckno to an 'Excellent' standard for **Bathing Water Quality** and implementation of Water Framework Directive and associated measures including surface water management and run-off from fields with the local community and farmers, continued improvements to Uisce Eireann WWTP and discharges and ongoing monitoring of water quality and engagement with the local community.

In the long term seek **environmental quality recognition** – Green Flag or Unesco Biosphere designation. This will also provide a Quality mark to Lough Muckno as a destination.



In conjunction with BNG policy and habitat creation develop a **Forest of Lough Muckno** community initiative to increase tree cover restore historic woodland cover and increase landscape capacity

Objective: Improved historic landscape integrity and habitat value.

Hope Castle Parklands

Reinstate and restore the legibility of the historic demesne parkland where feasible incorporating increased tree planting and adoption of semi-natural grassland management regimes.

Objective: Improved historic landscape integrity and habitat value.

Black Island

Work with Coillte to enhance woodland habitat through alternative management regimes and species mixes over time in tandem with commercial forestry needs.

Objective: Improved recreational and habitat value.

Rolling Fields and Drumlins

Maintain landscape character and patterns. Improve tree cover to enhance landscape capacity, visual amenity and biodiversity whilst accommodating passive recreation.

Objective: Enhance landscape character, capacity and biodiversity.

Drumgoose Lake

Support its evolution as an undisturbed nature area with controlled access, Initiate actions to reduce nutrient enrichment of the water.

Objective: Develop a local nature reserve

Lough Muckno Estate & Hope Castle Cluster



Key Projects 2 – 4 Hope Castle Cluster



Key Project No 2 - Hope Castle Renewal: Café, Orientation & Short/Holiday-let Accommodation



MASTERPLAN FRAMEWORK

Key Projects

Key Project No 2 - Hope Castle Hope Castle Renewal: Café, Orientation & Short-let Accommodation – Cont'd

Concept for Hope Castle

Restoration of exterior elevations and fabric. Internal treatment will retain historic features and character with a contemporary or distressed historic character – not restoration of lost internal period features – a contemporary approach.

Public access and management of main building to accommodate the following uses:

Ground floor

- café / visitor reception
- heritage interpretation
- event space
- small restaurant or tea room

First floor – own door short let holiday accommodation

4–6 short-let units
(1–2 bedroom units)

Second floor – own door short let holiday accommodation

3–5 short-let units
(1–2 bedroom, studio or family units)

Roof

- Viewing Platform

Basement

- Recording studios
- Exhibition Spaces
- Services
- Flexible use

All proposals – subject to funding availability

Phased Renewal & Re-use – PROCESS

(Subject to funding being available for each step)

Pre Design – Survey and Conservation Appraisal

- Detailed architectural fabric and building condition surveys
- Potential archaeological survey – potential below ground material
- Detailed measured survey
- Ecological surveys

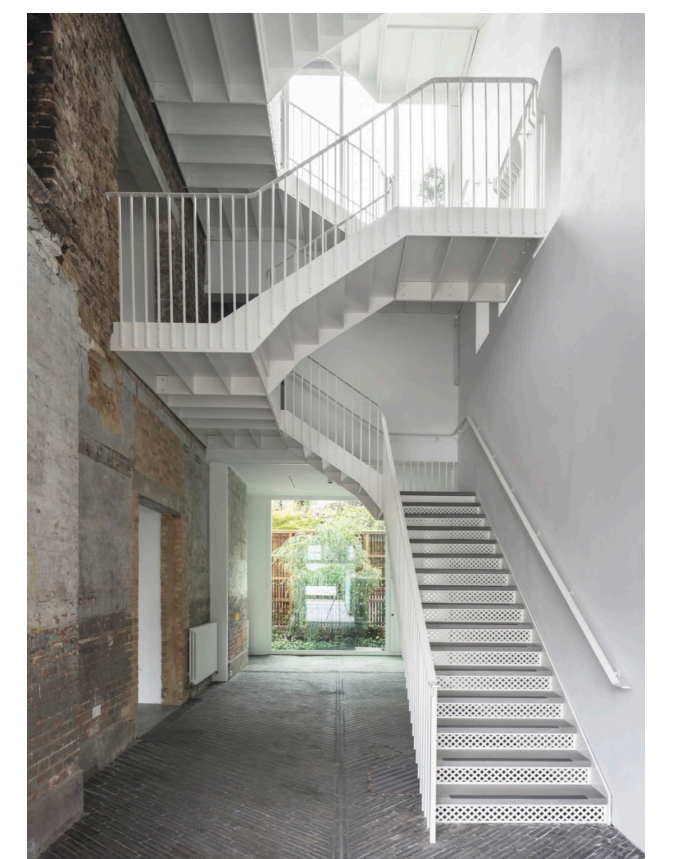
Phase 1

1A Stabilisation Site Works and Weathering – Structure, roof windows and render / elevation

1B Service extension addition and creation of safe spaces for meanwhile uses: Lifts, Fire Safety, Ground Floor minimal fit out, Services all levels (by Landowner)

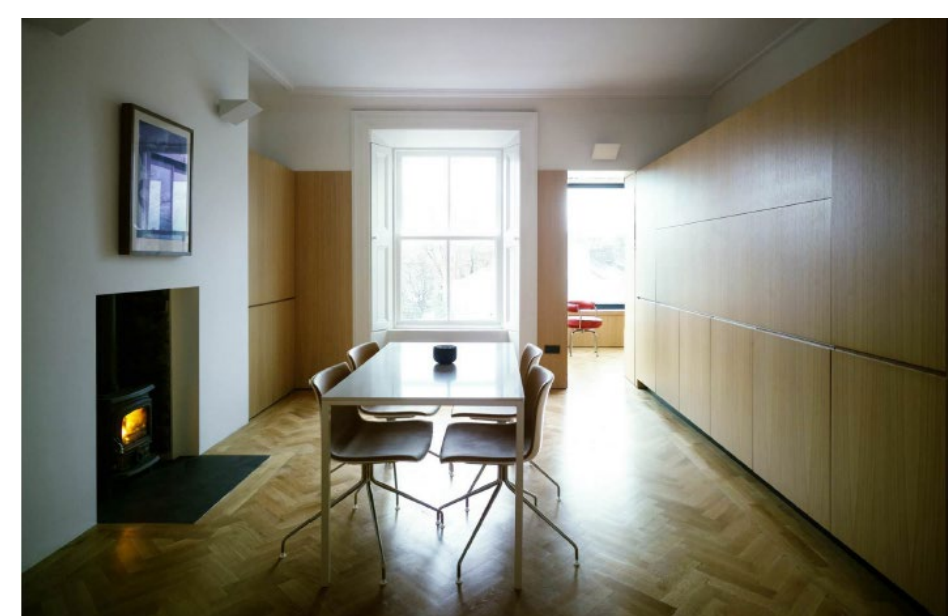
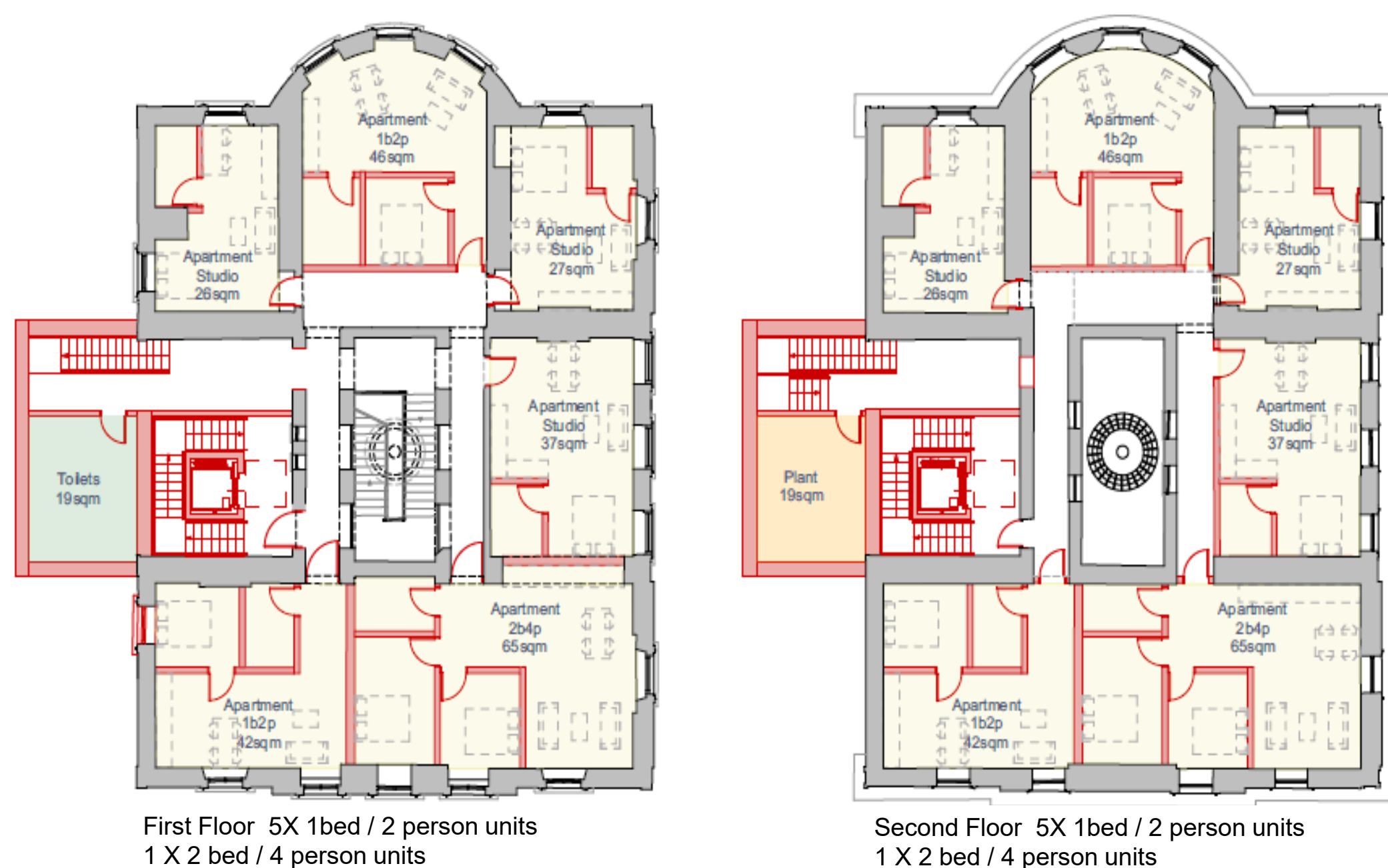
Phase 2 - Completion, Fit-Out and Finishes for long term uses – café, accommodation, retail, exhibition, studios (recording).

Fit out to requirements – internal walls / partitions, services completion, Joinery, Handover - (potentially by end-user)



Hope Castle Short Let Accommodation: 1st & 2nd Floors

1st and 2nd Floors as distinctive self-catering accommodation, short-let self contained holiday units. Own door access from central core.



Unique character Accommodation

- Big house room scale, proportions, high ceilings and windows
- Contemporary fit-out with distinct heritage character and retained features

Examples below:

Gosford Castle Co. Armagh – subdivided castle short-let units (very strong precedent).

St. Brides Castle in Pembrokeshire



Hope Castle as self-catering style apartment lets actually makes strong planning and commercial sense and addresses local tourism needs

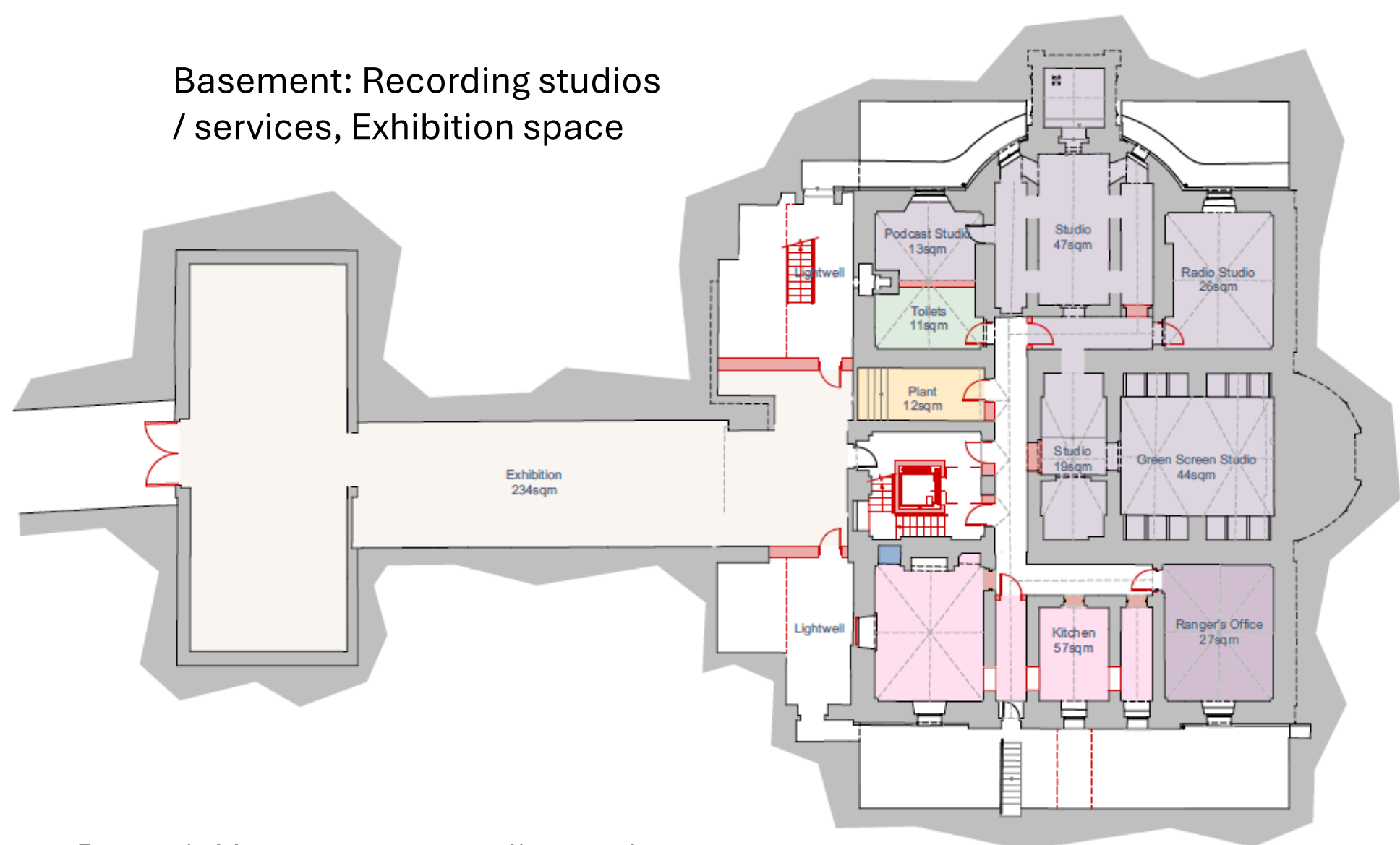
For a large stately home like Hope Castle, the apartment model is often more viable than a hotel for several reasons:

- Lower operational cost
- Matches Irish short-break tourism trends
- Better use of large historic rooms that convert well into 1, 2 bed family units or suites
- Risk diversification each generating revenue independently

MASTERPLAN FRAMEWORK

Key Projects

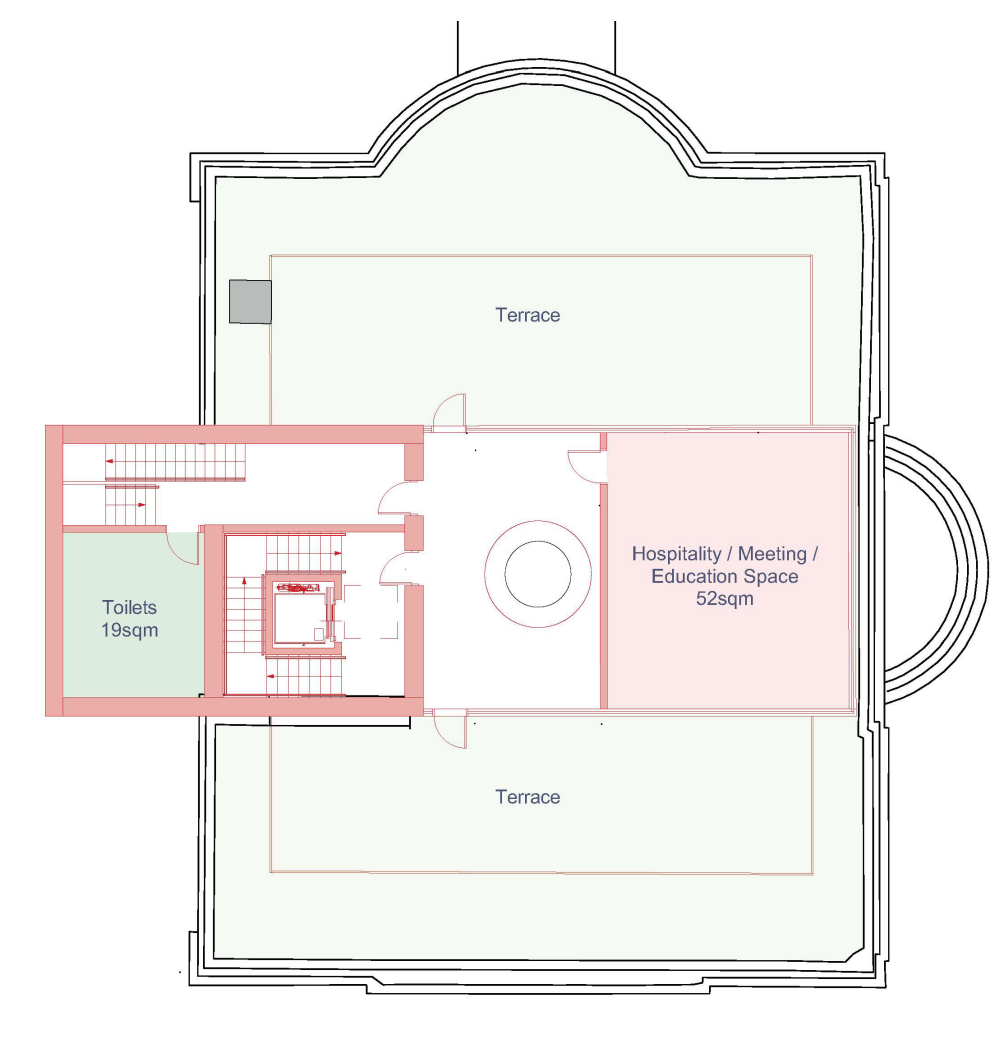
Hope Castle - Mixed uses to remainder of Castle



Ground: Café/ Retail / Orientation



Roof - Feature Viewing Terrace



Potential basement recording and podcast studios and suites



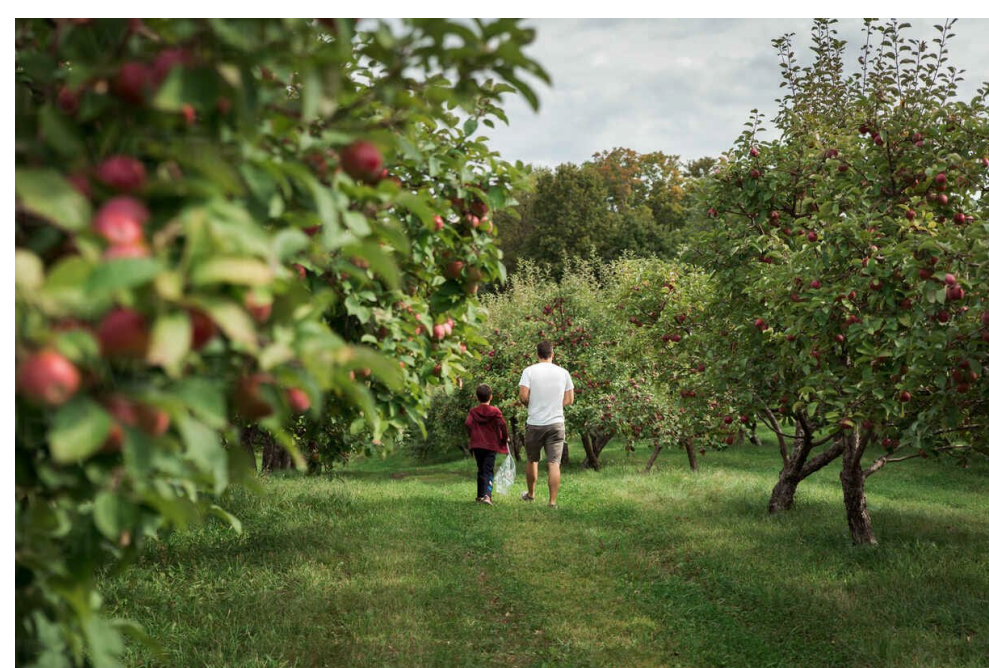
Ground floor /terrace café / restaurant ca. 100 seats and retail use
Example Powerscourt House in fire damaged structure
Rooftop terrace to left

Key Project 3 - Walled Garden Amenity & Events Space

Music and Culture

Develop a framework for accommodating Castleblayney's music culture through the provisions of world class facilities in a superlative setting e.g.

- Large open air concert facilities e.g. in the reimagined walled gardens
- Smaller facilities e.g. indoors in Hope Castle or in smaller outdoor spaces e.g. terraces and gardens
- Carry out a feasibility study to accommodate a recording studios in the basement of Hope Castle



A Heritage Conservation Project - Repair & reimagine walled garden - make legible the walls, orchards whilst facilitating other uses

Iveagh Garden Concert Venue - capacity 5,000 - Comparative Scale

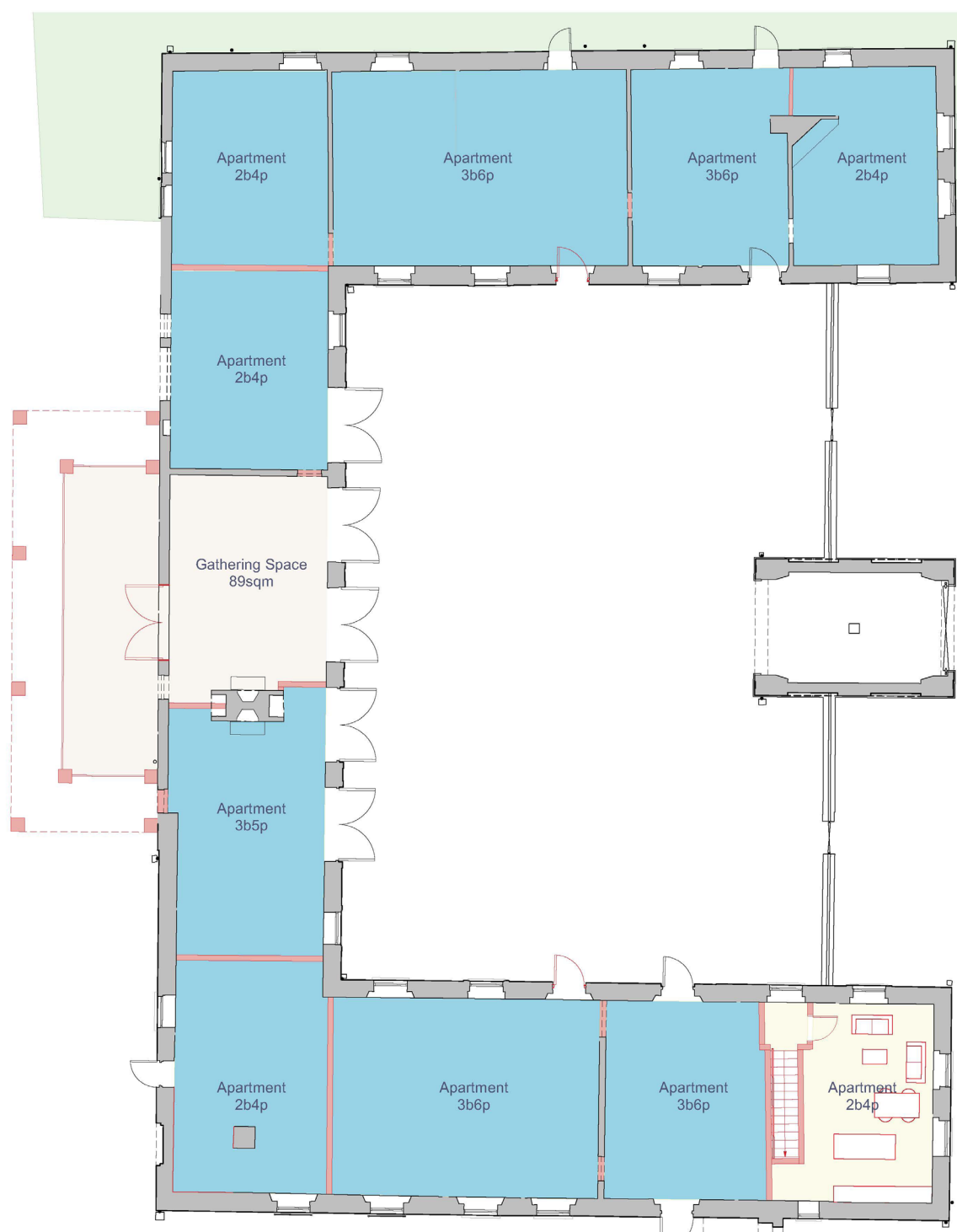


Once conservation / restoration of walls is completed the walled gardens present a large outdoor room with lawns to accommodate festivals, markets and seasonal events set within a perimeter orchard and horticultural elements.

Key Project 4 - Stable Block & Laundry to Short-let Accommodation

Stable Block potential - 14 no. 2-6 person units over two storeys (Potential additional Block 8 no. 2 bed units)

Laundry Building potential - 7-9 no. studio / 1 bed units.

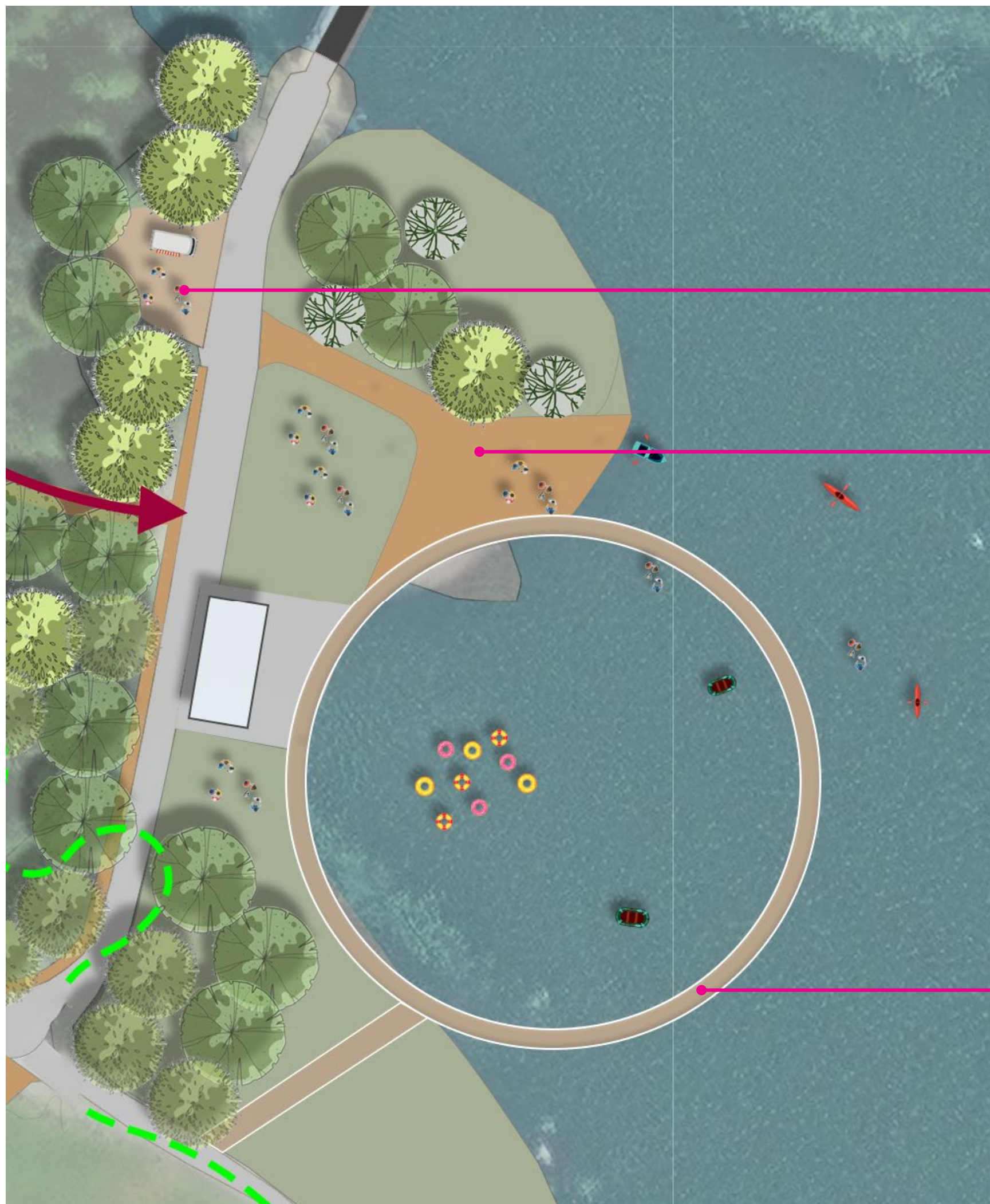


PROPOSED - Ground Floor Plan Scale 1:100 @ A1

MASTERPLAN FRAMEWORK

Key Projects

Key Project No 5: Beach, Waterfront and Swimming Area



Service area – mobile sauna and kiosk space

Enhanced beach / sitting area – furniture / landscape

Boardwalk enclosing protected swimming area – subject to depth and water quality analysis / suitability and further design study.

Formalisation of swimming at this location is dependent on resolution of localised water quality issues



Case Study / Precedent - Eastern and Western Bathing Resort - Almindso, Silkeborg Municipality – Denmark's Outdoor Capital developed around a series of small lakes



Muckno Beach



Almindso Beach Resort



Key Project No 6: White Island & Scout Camping Area & Key Project No 7: Improved Adventure Centre



Use clearing to host scouting or similar events in a controlled access environment.



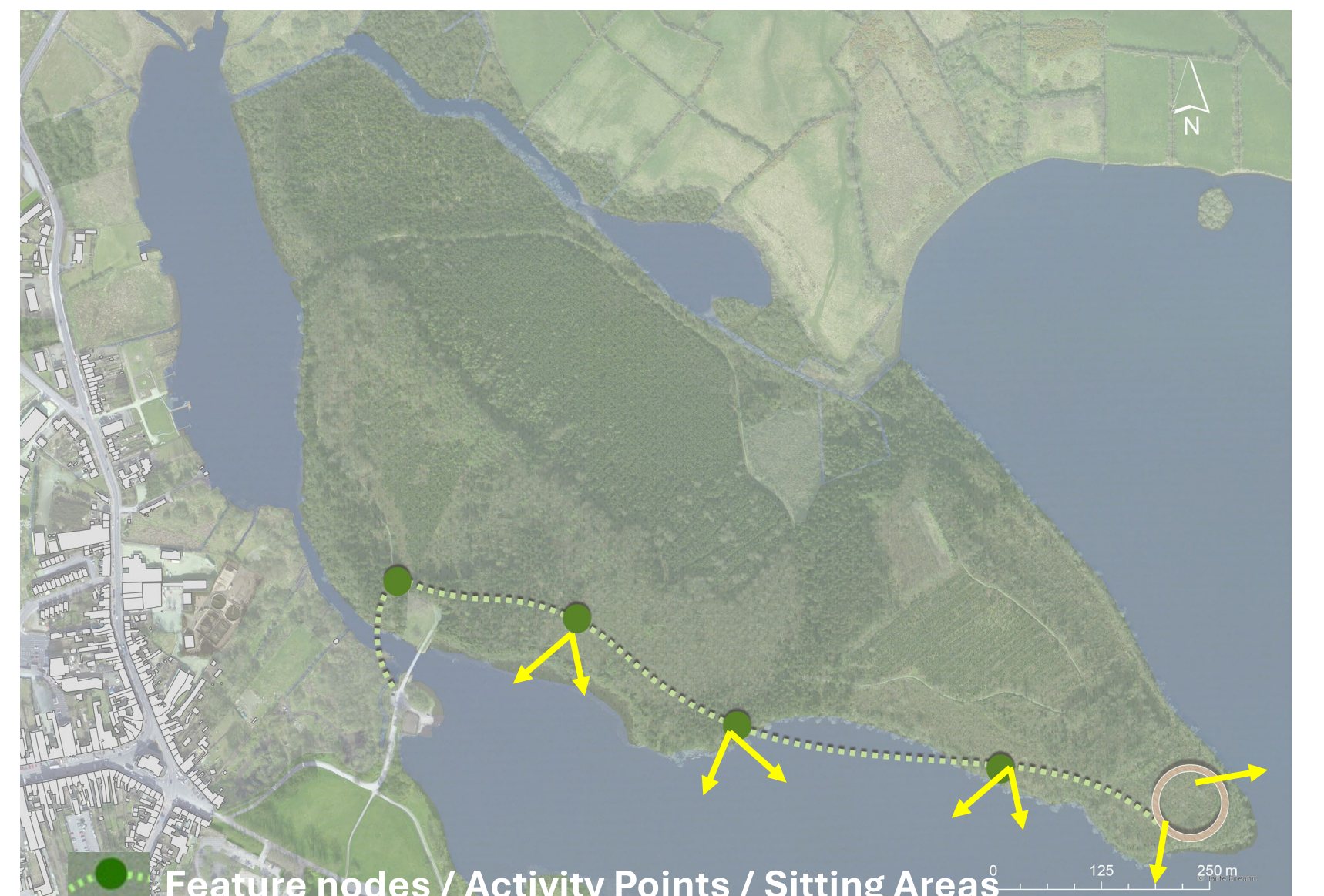
Review Adventure Centre facilities and needs. Potential to enhance with new facilities and distinctive building and waterfront.



Key Project No 8: Black Island Trails and Adventure Area

Feasibility Study - Lakeside Treetop Walkway (long term) - Concept

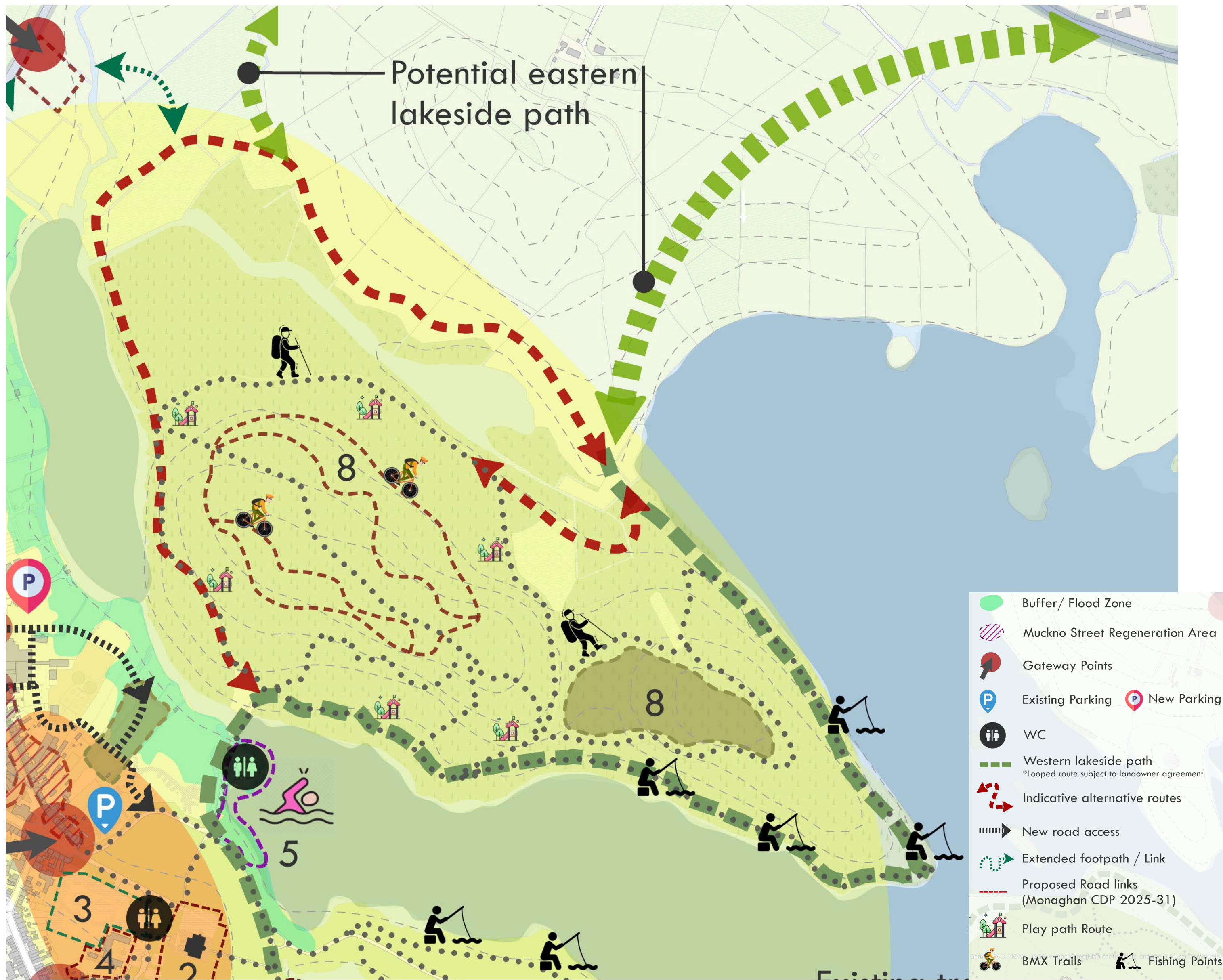
- Discrete and sensitively positioned iconic lakeside treetop walk
- Walk amongst the treetop foliage and over the lake
- Experience panoramic views south, west and east over Lough Muckno and the Monaghan drumlins.
- An experience that changes with the seasons.
- Nodal points of activity or sitting areas – necklace of features
- Laid gently in and on the landscape and from which the landscape can be experienced without detracting from it.
- A unique lakeside position
- Length approx. 850 lin.m



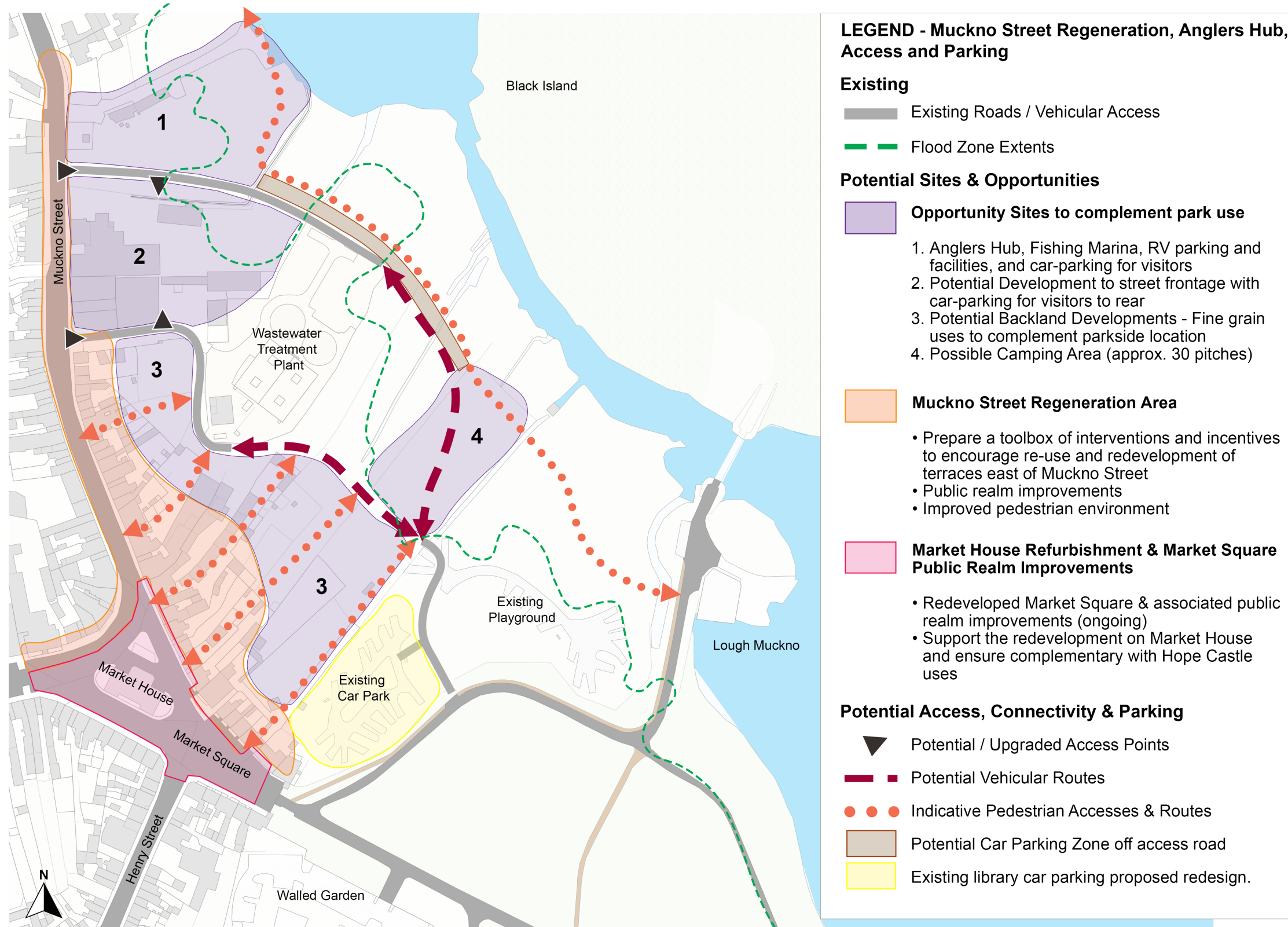
MASTERPLAN FRAMEWORK

Key Projects

Key Project No 8 Continued: Black Island Trails and Adventure Area



Key Project No 9 Muckno Street Regeneration, Anglers Hub, Access and Parking



Anglers Hub & Fishing Marina

- The lake is perceived in angling circles as of improved water quality and one of the best coarse fishing lakes in Ireland.
- Angling tourists are good spenders – however lack of accommodation locally reduces their potential contribution to the local economy.
- There is extensive existing infrastructure around the lake. However boating access – launch points etc are poor.
- Hub to provide boat hire, marina, facilities / services, angling school, parking & RV facilities

Muckno Street Area – Strategy:

- Open up new access to rear of Park allowing alternative vehicular access and development opportunities – particularly development complementary to park uses inclu. parking.
- Park plan and interventions to Muckno Street stimulate renewal of street.



RV / Campervan Facilities e.g. Portumna Marina



New Parking - reimagined

MASTERPLAN FRAMEWORK

Key Projects

Key Project No 10: Concra Wood Golf Club – Complementary Developments

Integration of CGC into Lough Muckno offer.

Diversification and new services / activities at Concra GC:

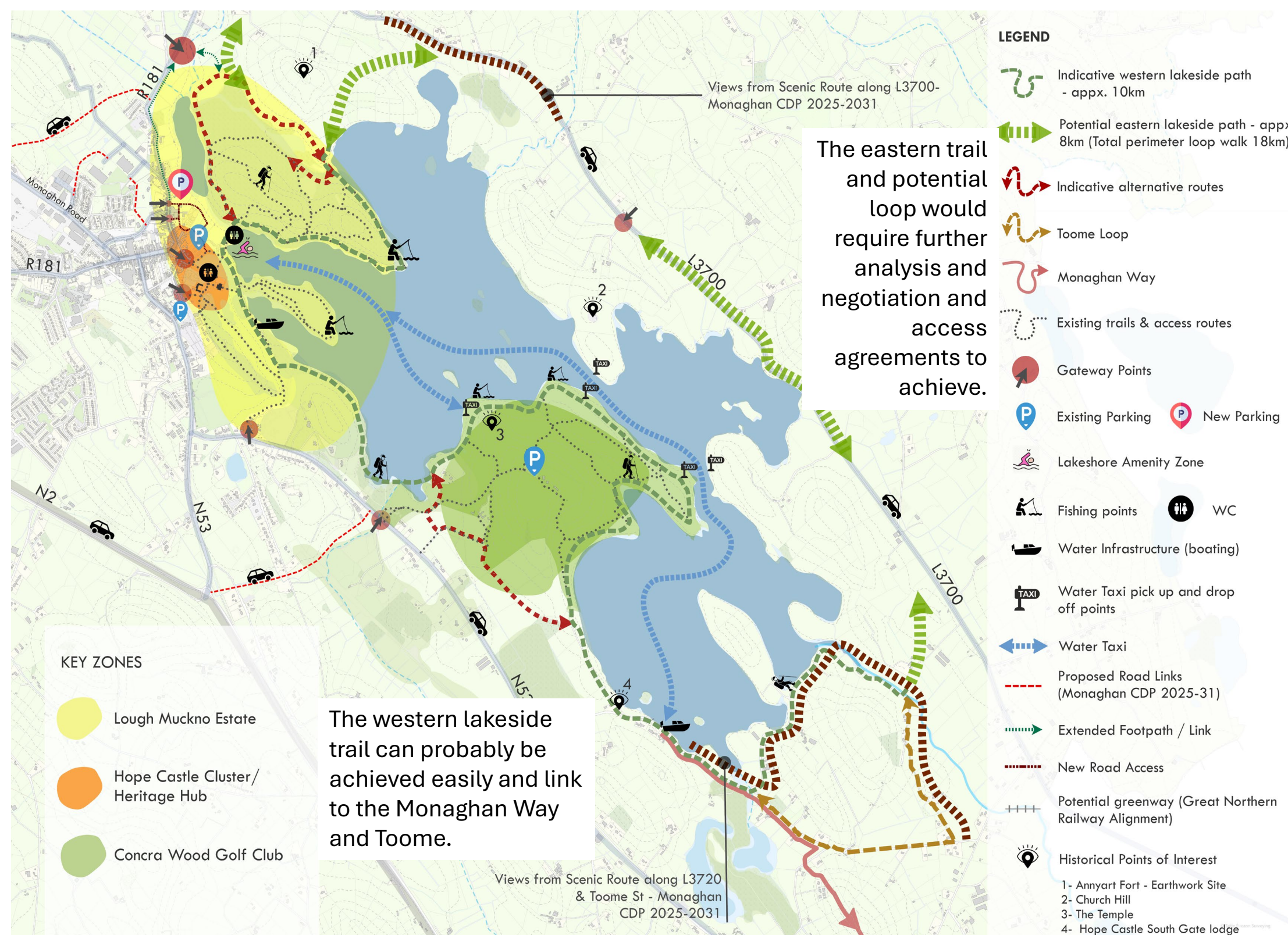
- Kiddie golf
- Archery
- Billiards /Pool
- Driving Range / practice
- Chalet / Glamping opportunities
- Potential redevelopment of old stables (Adjacent landowner) as holiday let accommodation

Links through new trails and shuttle links to Hope Castle and Town Centre



Key Project No 11: Lakeside Trail

An off-road walking route through the countryside around the lake. A full looped walk around the perimeter could be ca. 18km of pleasant gently undulating countryside, linking potentially to sites of interest along the way.



Opportunity for mutually beneficial agri-environmental schemes to work in tandem with the trail e.g. new field boundaries and interception ditches/swales forming a walking strip along the lake shore and helping tackle agricultural run-off.



Bennettsbridge to Kilkenny – The Nore Way



Floating Boardwalks



Ballybay Wetland Walk



Derwent water, walk Keswick, Lake District, Cumbria – looped walk around lake of 10m (16km). Similar scale to Muckno. Part of National Park destination.

Key Project No 12: Way Finding and Interpretation Plan

Way Marking and Interpretation



More detailed exhibition and story telling – Hope Castle



Céide Fields Neolithic Site and Visitor Centre



The Battle of Aughrim Visitor Centre

As well as practical orientation and directional signage there is an opportunity to interpret, educate and story tell using Lough Muckno as a source:

- Nature / Biodiversity and ecology
- The geology of lake and Drumlin – unique to the region and wider area representing Ice Age landscapes.
- The history of Hope Castle & Castleblaney.
- The more ancient history of the area, Lough Muckno and the Ulster borders.
- Local music and culture traditions.

MASTERPLAN FRAMEWORK

Policy and Management Structures

Policy Supports Promoting Complementary Land Uses

e.g. Facilitate sensitively designed/located Self Catering/Other Accommodation

- Caravan, Camping and Motor Homes in appropriate locations especially close to the town
- Chalets and Lodges in small clusters
- Eco-lodge or similar tourist accommodation in private lands around the lake
- Imaginative re-use of derelict and agricultural buildings throughout the new “park” / study area.

All such projects would be subject to strict environmental requirements – particularly water quality, ecology and landscape/visual.



Management Partnership Structure



Similar Management Structures

Vandeleur Gardens, Kilrush, Co. Clare



Castlecomer Discovery Park



Next Steps Ongoing Workplan

Key Phase Two Components	Workplan period
Consultation with Local Elected Members, Muckno Dev. Committee, and Community	May – Jun 2026
Ongoing Refinement of Preferred Options	July / August / September 2026
Development of Action Plan with Preliminary Costing and Phasing	
Expand on Project Structures, Management and Economic Rationale / Benefits	
Ongoing engagement with Strategic Environmental Assessment Process	
Draft Masterplan Report	November 2026
Preparation of Strategic Environmental Assessment & Appropriate Assessment Screening	
Public Consultation – 4 week statutory period as part of SEA process	December 2026
Finalise Masterplan and SEA	December 2026
Project Completion	December 2026

CONSULTATION

What you told us – Do proposals reflect this?

Consultation – Key Elements

- **Stakeholder Workshop** 28/5/2025 - 17 attendees
- **Community Drop-In Event** 28/05/2025 - 92 attendees
- **Online Community Survey** 07/05-08/06/2025 – 271 respondents
- **Youth Survey and Engagement** 16/05/2025 (MCC), 31 students from Castleblayney College and Our Lady's Secondary School.
- Plus communications by website, notices, news articles, 1-1 word of mouth and presentations to key groups, public and private stakeholders and elected members.
- **Strategic conversations and Meetings:**
 - MCC Departments
 - Castleblayney & Carrickmacross Municipal District Council
 - Coillte
 - Concra Golf Club
 - Castleblayney Town Team
 - Failte Ireland
 - Inland Fisheries Ireland
 - CB Outdoor Activity Centre
 - Castleblayney Scouts

Stakeholder Workshops & Community Drop In Event

What Works Well

- **Natural Beauty:** Black Island, scenic views, bluebells, and easy access.
- **Popular Activities:** Walking, running, Christmas Market, and community events.
- **Community Value:** Strong emotional and recreational connection to the area.

Key Issues Identified

- **Water Quality:** Concerns about pollution and perception of poor water quality.
- **Buildings & Infrastructure Gaps:** Neglect of heritage buildings, Lack of toilets, covered areas, signage & lighting.
- **Governance & Management:** Absence of a clear management structure & park ranger. Conflicts with Coillte uses.
- **Safety & Cleanliness:** Antisocial behaviour, littering & inactive visitor tracking systems.
- **Connectivity:** Poor physical/visual connection between town and lake.

Opportunities for Improvement

Nature & Environment

- Rewilding Black Island & White Island.
- Biodiversity enhancement and native planting.
- Buffer planting and fencing around the lake.

Recreation & Access

- Boardwalks, loop walks, and greenways around the lake.
- Adventure trails, ziplines, and teen-friendly spaces.
- Campervan parking, picnic areas, and dog parks.

- Indoor sports facilities – Basketball, Boxing etc.
- Scouts den and accommodation (International).

Heritage & Culture

- Restore Hope Castle and Annex for:
 - Hotel, restaurant/bar, event venue, historical centre.
 - Hostel accommodation with Outdoor Activity Ctr

Urban Integration

- Improve links
- Permeable car parks, EV charging points, and signage.
- Urban regeneration and commercial revitalisation.

Summary of Online Community Survey

Demographics & Usage

- 62% of respondents are aged 35–55.
- 73% live and work in Castleblayney.
- 76% live within 5 km of the town.

Community Involvement

- 74 different community groups mentioned, including Castleblayney Faughs, Scouts, Tidy Towns, etc

Lough Muckno Usage & Perception

- **Visitation:** 44% visit a few times a week; 20% once a week.
- **Transport:** 62% travel by car; 34% walk.
- **Common Activities:** Walking/running, library visits, socialising & outdoor activities.
- **Positive Perceptions:** Natural beauty, peacefulness, family-friendly, biodiversity & historical value.
- **Negative Issues / Challenges Identified:**
 - Derelict buildings (Hope Castle, Annex)
 - Lack of facilities (toilets, lighting, cafés)
 - Water quality and environmental concerns
 - Accessibility, safety issues and anti-social behaviour

Memories & Sentiment

- **Strong emotional connection to Hope Castle,** nature walks, festivals, and childhood experiences.

Support and Community Vision for 2035

- **90% supportive** of the development of a Masterplan.
- **Restored Hope Castle & Annex** and in use (40%)
- **Tourist attraction** A vibrant community space-Enhanced environment & recreation



Projects/Tasks/Uses arising from Consultation Process and inclusion in plan.

Suggested Projects / Tasks / Uses / Actions	Addressed / Proposed / Comment	Suggested Projects / Tasks / Uses / Actions	Is Addressed / Proposed / Comment	Suggested Projects / Tasks / Uses / Actions	Addressed / Proposed / Comment	Suggested Projects / Tasks / Uses / Actions	Is this proposed? / Reasons
Current Negative Issues / Challenges		Lough Muckno – the lake		Potential future use of Hope Castle		Youth Survey	
✓ Derelict buildings	✓ Yes	• Improve Water Quality	✓ Yes - programme	• Hotel in private sector	✓ No Hotel, but self – catering holiday lets	• Basketball Court	✓ Yes
✓ Lack of facilities	✓ Yes	• Bathing / Swimming Areas	✓ Yes	• Venue for wedding, gatherings, etc	✓ Yes	• Skate Park	✓ No
✓ Water Quality	✓ Yes	• Board Walks	✓ Yes	• Restaurant / Bar	✓ Yes	• Tennis Court	✓ Restoration of Courts
✓ Environmental Concerns	✓ Yes	• Loop walk /Greenway around the lake	✓ Yes – Key feature	• Festivals & Events	✓ Yes	• Running / walking track	✓ Yes
✓ Accessibility Issues	✓ Yes	• Angling Facilities	✓ Yes – retain and improve	• Heritage Centre	✓ Yes – Interpretation	• Dog Park	✓ Not current proposal
✓ Safety Concerns	✓ Yes	• Beach area	✓ Yes – more facilities	Potential future use Annex Building		• Bike path / cycling course	✓ Yes
✓ Anti-social behaviour	✓ Greater footfall and staffing	• More / better boat landing facilities	✓ Yes	• Hostel	✓ Yes – mixed	• Adult Playground	✓ No
General Actions & Requirements		• Inflatable water playground	✓ Possibly	• Activity centre	✓ Yes – Adventure centre	• Teen Centre Playground	✓ Yes
• The public can continue to freely access Lough Muckno	✓ Yes	• Blueway	✓ Yes – using rivers also	• Lifestyle café	✓ Yes	• Spinning Instalments	✓ No
• Provide range of facilities (toilets, bins, & seating)	✓ Yes	Urban fringes of Castleblayney		• Creative space	✓ Yes – music / recording	• Rock Climbing	✓ No
• More recreational activities	✓ Yes	• Urban regeneration	✓ Yes	• Equestrian use	✓ Not specific proposal	• Swinging Chairs	✓ Play area
• Improve Water Quality	✓ Yes	• Connection physical or visual from Muckno Street	✓ Yes?	• Creche	✓ Potentially in Muckno St	• Swimming competition area	✓ Lake pool proposed
• Environment Preserved and Enhanced	✓ Yes	• Alternating parking / access	✓ Yes	• Scouts Den	✓ Not a building	• Camping	✓ Yes
• Biodiversity Net Gain	✓ Yes	• Permeable car park	✓ Yes	• Tourists Accommodation	✓ Yes – stable block	• BBQ area	✓ Yes
• Linking Golf Course to Hope Castle	✓ Yes	• Creche	✓ Potentially in Muckno St	Opportunities in Wider Lough Muckno Estate		• Inflatable water playground	✓ Not current proposal
• Self-sustaining Sports and Recreational premises (small scale/ multi-sports) with indoor facilities	✓ Maybe – opportunity sites at Muckno St	• EV Charging points	✓ Yes	• Boardwalks	✓ Yes	• Cinema	✓ No – events space?
• Dog Park	✓ Not currently inclu.	• Campervan Park	✓ Yes	• Varying Pedestrian and Vehicular entrances	✓ Yes	• Bike Rentals	✓ No
• Signage	✓ Yes	The Western lands		• Tourists Accommodation	✓ Yes	• Cat, dog, squirrel cage	✓ No
• Larger play park	✓ Yes	• Tourists Accommodation	✓ Yes	• Coffee Dock / Kiosk	✓ Yes	• A building to rest inside trees	✓ Yes
• Rain / weather-proof facilities for events and activities	✓ Yes	• Linking Golf Course to Hope Castle	✓ Yes	• Restore old tennis courts	✓ Yes	• Rope playground in trees	✓ Yes
The Muckno Demesne, Black Island historic parkland		• Monaghan way: Guides, Signage & Connectivity	✓ Yes	• Varying Car Parking	✓ Yes	• Pier	✓ Yes
• Campervan Car Park (Back of car park)	✓ Yes	• Boardwalks	✓ Yes	General Management Issues		• Changing rooms	✓ Yes
• Rewilding Black Island	✓ Habitat improvements	The Eastern Lands		• Overall security & management	✓ Yes	• Café	✓ Yes
• Bluebells walk	✓ Part of habitat design	• Paths / Loop Walk	✓ Yes	• Need for Park Ranger person	✓ Yes	• Leisure Centre	✓ No
• Better paths in White Island	✓ Yes	• Fencing off & buffer planting along sections	✓ Yes – restore woods	• Need for measurements on visitor numbers	✓ Yes	• Saunas, cold plunger	✓ Mobile facilities
• Ziplines and Adventure Trails	✓ Links proposed	• Work with farmers	✓ Yes	• Address overall safety concerns and anti-social behaviour	✓ Yes	• Wooden Structures (like Rossmore Park)	✓ Yes – details
• Boardwalks Mindszinky to Bridge		• Eco-tourism	✓ Yes			• Shelter with chargers for teens	✓ Yes - details
		• Low-impact development	✓ Yes				