

ST LOUIS CONVENT LANDS

Reimagining Monaghan Town



Comhairle Contae Mhuineacháin
Monaghan County Council

John McLaughlin
Architects

Objective

Explore the potential of St. Louis Convent lands and its heritage buildings, which were recently acquired by Monaghan County Council

Vision for the Convent Lands

St Louis lands are proposed to be meaningfully connected to Monaghan town with a new formal entrance at Broad Road, with a new tree lined avenue leading to St Louis buildings, proposed to be adapted for community use over several phases.

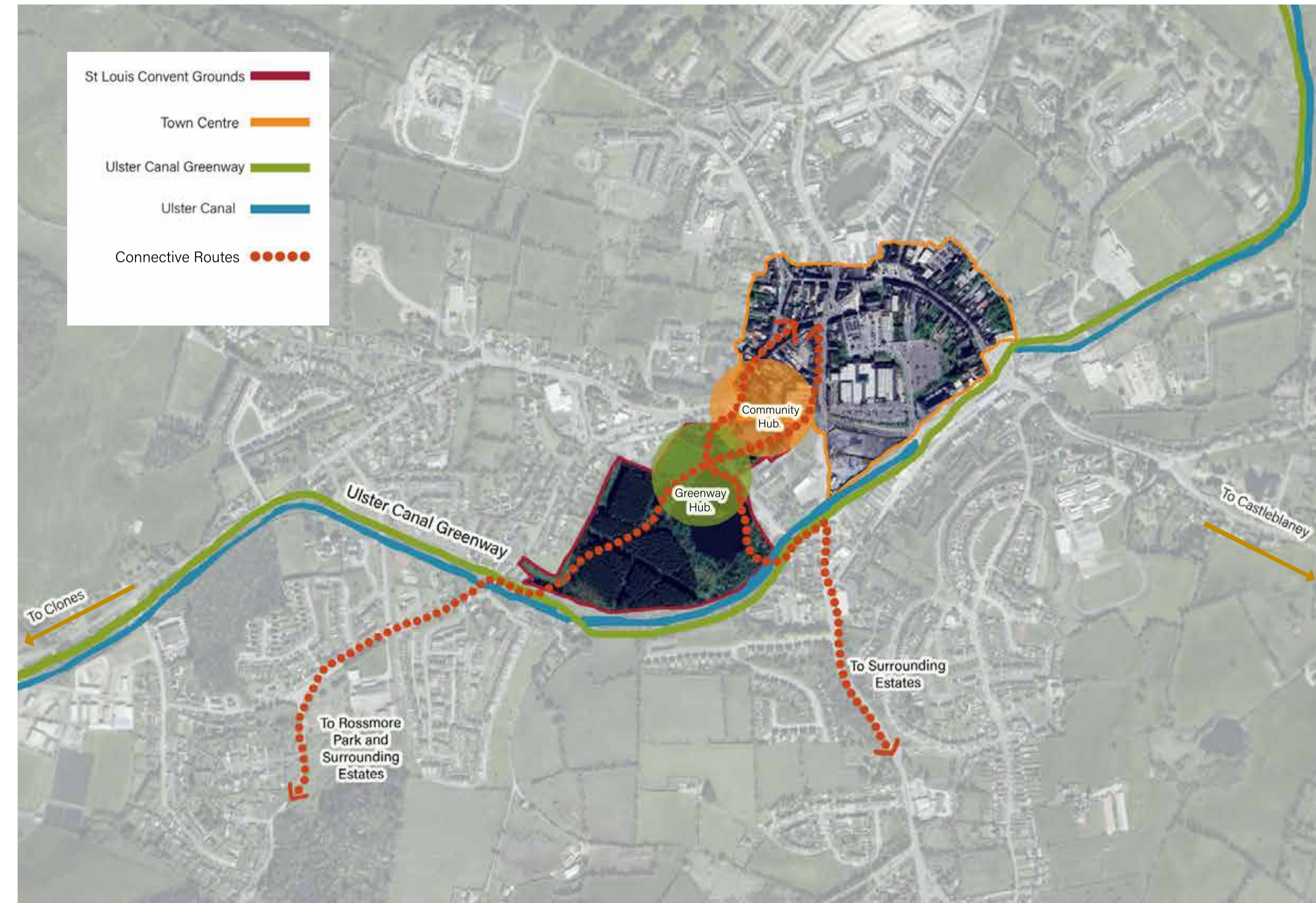
The existing Clones Road entrance is proposed to be transformed into a new public space and western gateway to Monaghan Town Centre. Its central position in relation to St Louis schools makes it the ideal location for a school set-down area. A new terraced grass amphitheatre will be inset into the slope to allow for outdoor performance and film screenings on summer nights. The grassy area in front of this will be used for recreation and play by both the visitors to the park and by the adjoining schools.

Beyond this grassy area a new lakeside pontoon will give access to the Convent Lake which will allow it to be used for kayaking and fishing. A pathway will go around the lake giving access at a number of points and will continue as a floating boardwalk in front of the St Louis Girls Secondary School.

Due to the flooding issues across the St Louis site, new indoor sports facilities on the site, suggested at the public consultations, were not considered feasible, and the most appropriate use for the land is con-sidered to be parkland. The former chapel and nursing home are proposed to be converted to a multi-disciplinary community arts space and a hub for visitors using the Ulster Canal Greenway. Walkers and cyclists will be able to reach the hub along the boardwalk over the lake and the softer ground to its south.

What would you like to see in the new park?

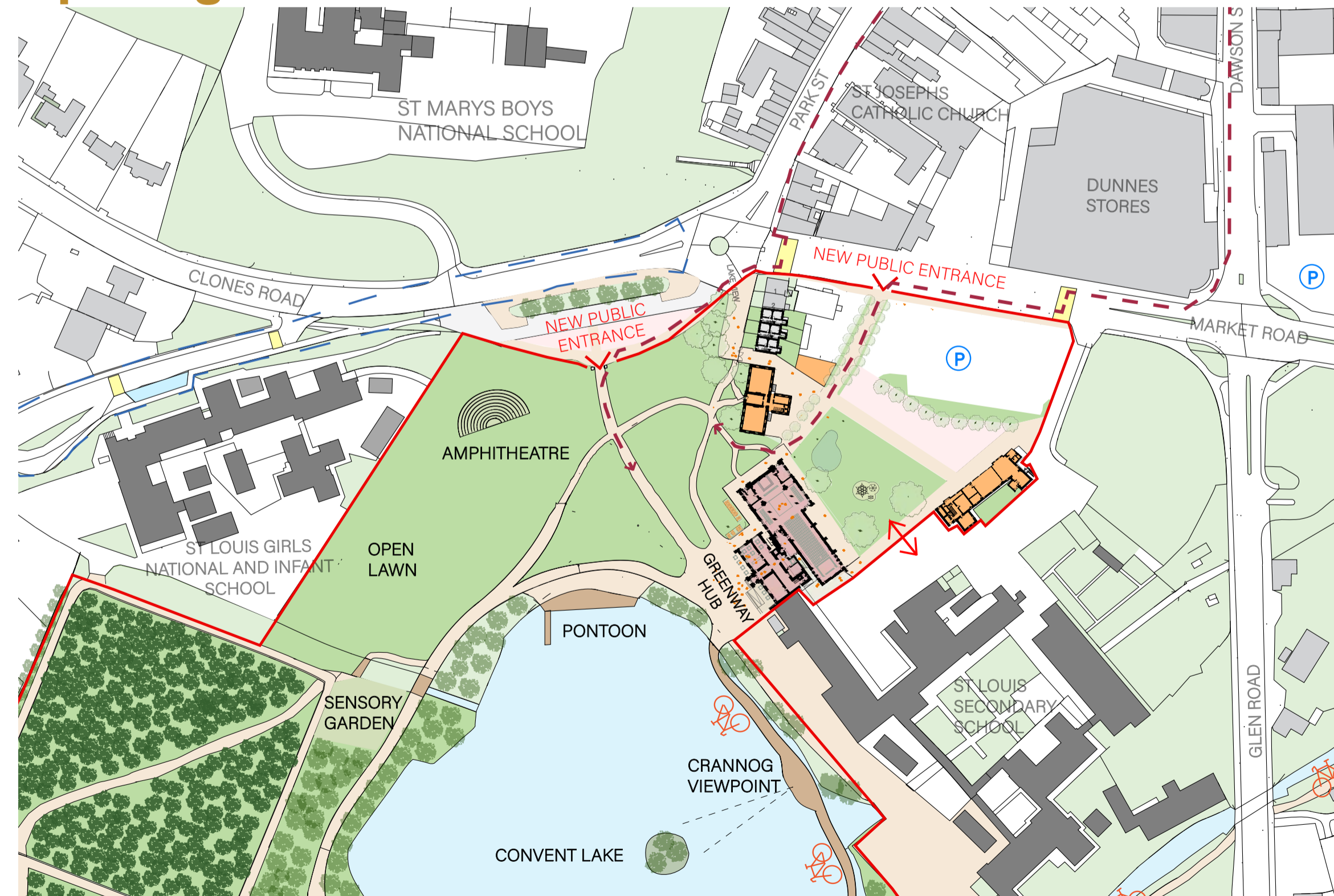
Connecting St Louis Lands



St Louis - Masterplan



Opening St Louis Lands to Town Centre



New Uses for St Louis Parklands



Waterford Greenway Cycleway



Greenway Hub



Outdoor Performance Space



Sports Activities



Flood Resistant Boardwalk



Nature Based Drainage



Rialtas na hÉireann
Government of Ireland



Cómhaointhe ag an
Aontas Eorpach
Co-funded by the
European Union



Tionól Réigiúnach
An Tuaiscirt & An Iarthair
Northern & Western
Regional Assembly



MONAGHAN
HERITAGE
OFFICE



An Roinn Tithíochta,
Rialtais Áitiúil agus Oidhreacht
Department of Housing,
Local Government and Heritage



Lár Bailte ar dTús
Town Centre First