

# 1. WELCOME

## Draft Inniskeen Public Realm Spatial Plan

### INTRODUCTION

Welcome to the public consultation process for the Draft Inniskeen Public Realm Spatial Plan. These panels explain the findings of the spatial plan process to date and present our analysis and series of draft projects that are currently proposed. We now invite you to have your say and help us shape the Inniskeen Public Realm Spatial Plan so that it accurately reflects the needs of the village now, and its future potential for locals and visitors.

The Inniskeen Public Realm Spatial Plan was commissioned by Monaghan County Council in August 2020. It reflects recognition that Inniskeen holds enormous potential in the role of the local community life and potential to welcome visitors to enjoy the culture and heritage attractions such the Patrick Kavanagh Centre. A plan is now needed to strategically coordinate a range of potential village improvements into a series of projects around an agreed set of objectives for the area. The completed Public Realm Spatial Plan shall be used to leverage funding opportunities for the delivery of these projects.

WELCOME  
TO

Monaghan  
COUNTRY



Kavanagh  
Trail

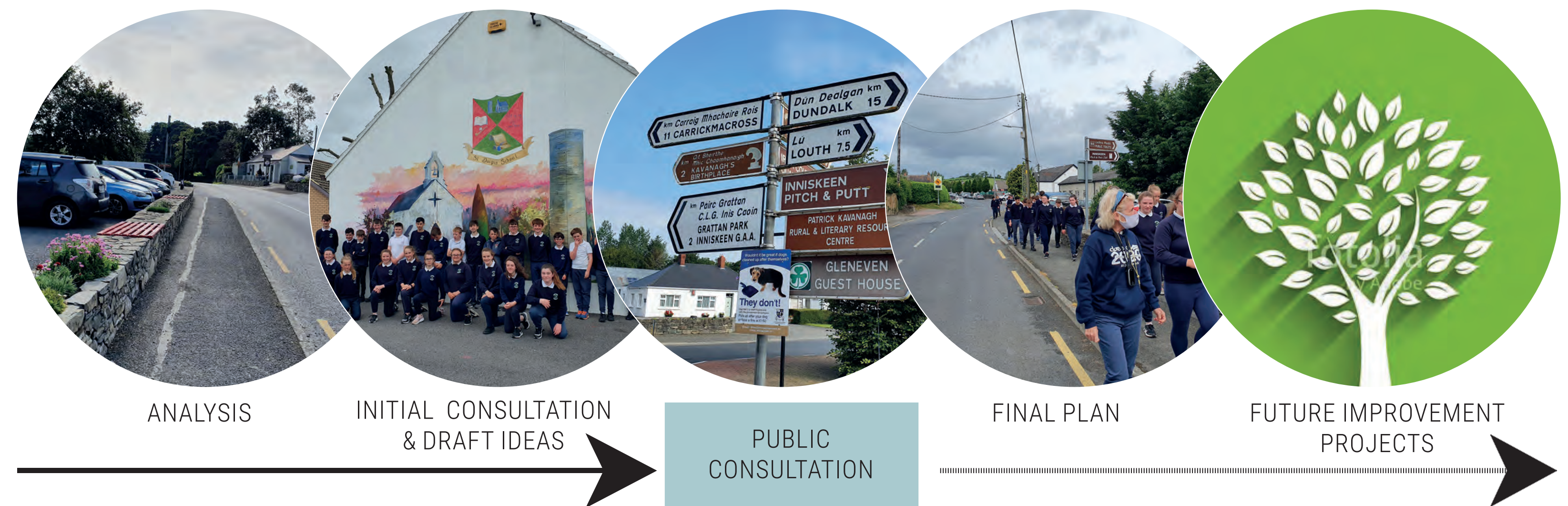
Monaghan County Council  
Comhairle Contae Mhuineacháin

### WHAT IS PUBLIC REALM?



Public Realm is the space between our buildings. Streets, Roads, Footpaths, Trees, Planters, Parks. It helps make our towns and villages more unique, functional, accessible and pleasant places to be

### THE PROCESS



The process is being led for Monaghan County Council by The Paul Hogarth Company, a Landscape Architecture, Urban Design and Planning Consultancy with over 30 years experience improving public realm planning, design and delivery

It is important that this plan reflects the views and aspirations of the local people. Local groups were contacted during the analysis stage, and now school children, residents, as well as users of the village community facilities are encouraged to share your thoughts on the draft public realm spatial plan

### HOW CAN I HAVE MY SAY?

To help shape this plan, we would like to hear your thoughts about the developing Inniskeen Public Realm Spatial Plan, and your creative ideas for the area

You can give us your views by emailing your thoughts on Inniskeen's Public Realm to: [Inniskeen@paulhogarth.com](mailto:Inniskeen@paulhogarth.com)

You can also complete our online survey which can be found on the Monaghan Co Co website



# 2. PUBLIC REALM ANALYSIS

## Draft Inniskeen Public Realm Spatial Plan



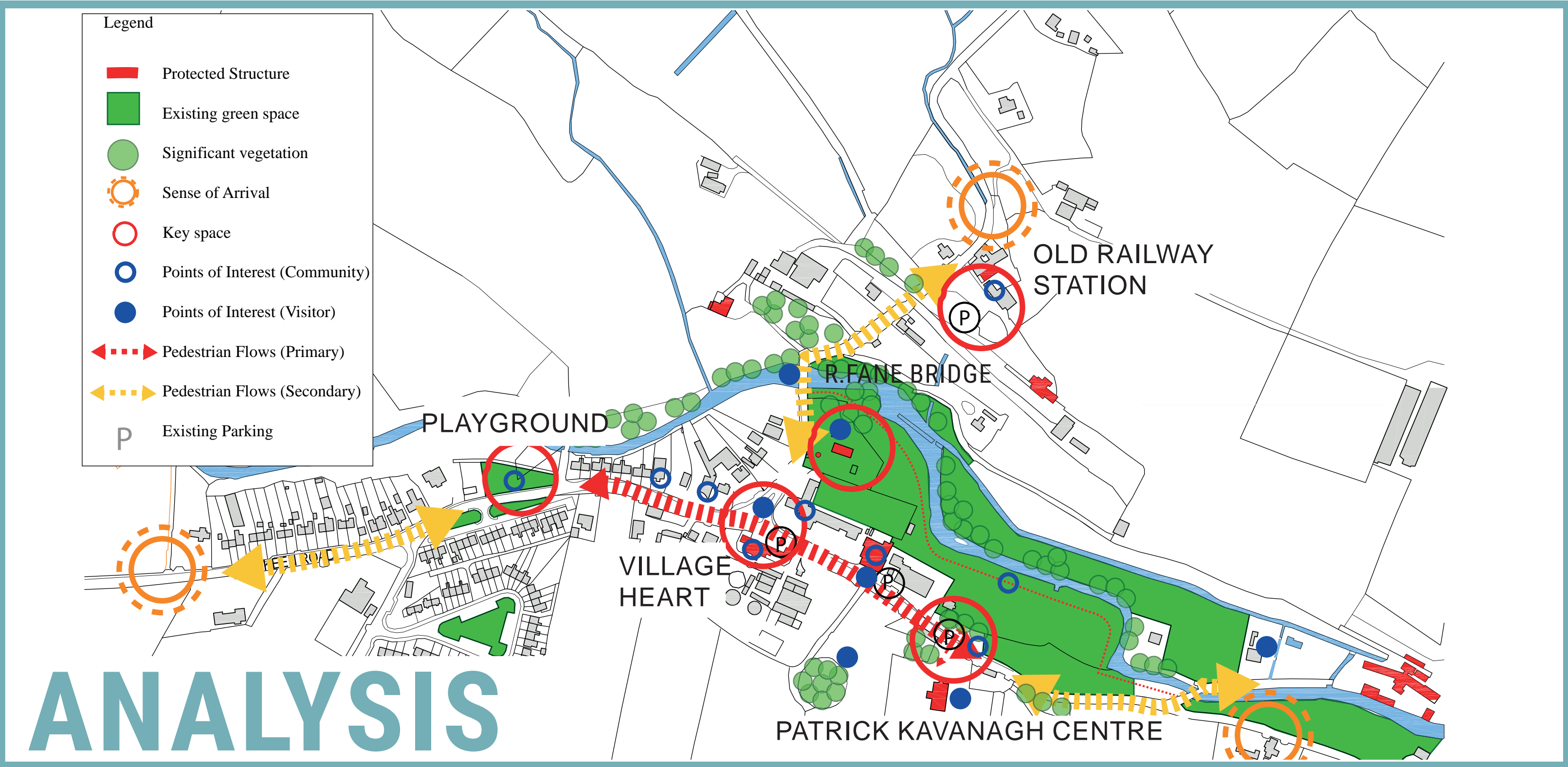
Inniskeen built heritage creates the backdrop for the public realm. A number of interesting spaces are created with individual functions such as the central t-junction, playground, the old railway station, and near Patrick Kavanagh centre



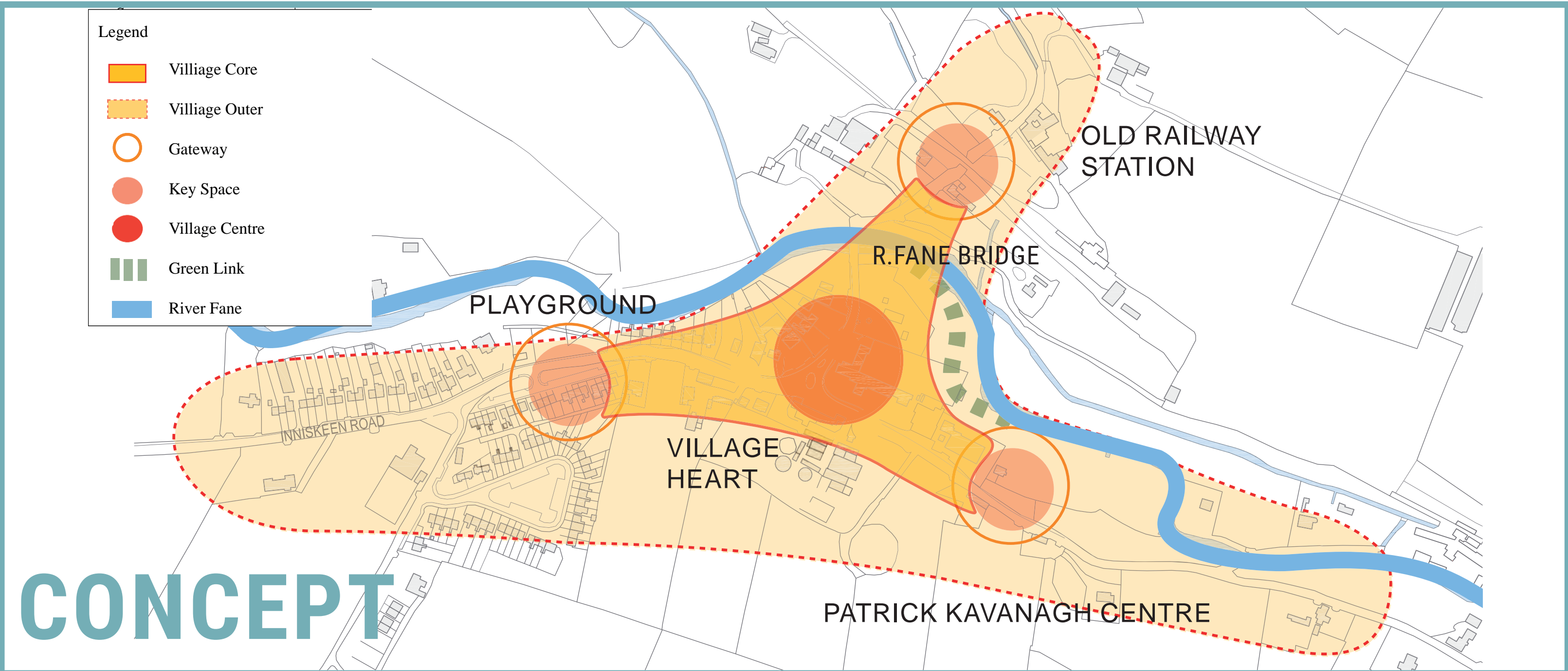
Key arrival nodes within the village such as St. Mary's space lack identity and character. There is also lack of physical infrastructure leading to some key spaces feeling disconnected from the village core and unsafe for pedestrians



There is a varied range of wayfinding and interpretation panels around the village for locals, visitors, pedestrians and vehicles. Some of this signage is extremely positive and welcoming, however some is less necessary adding to physical and visual clutter



- Inniskeen has a rich built heritage reflected in the natural stone wall buildings and boundaries around the village
- A number of key spaces were identified that have specific functions as arrival nodes, community spaces, car parking, and playground
- Connections around the village were sometimes broken and require footpaths or safe crossing points for pedestrians
- There are a number of attractions used by both locals and visitors to Inniskeen



- We believe Inniskeen should develop a stronger village core to define the heart of the village in a concentrated area. Enhancements include public realm upgrades including high quality surface finishes, street furniture and interpretive signage for locals and visitors, and reflect existing village character
- Three further key spaces identified as Playground, Old Railway Station, and St. Mary's Space should be used to define the edges of the core and become the gateway into the central part of the village
- The outer village enhancements include managing and maintaining existing surfaces, planted areas and advanced signage



HAVE YOUR SAY...

DOES OUR ANALYSIS AND CONCEPT CAPTURE THE KEY ISSUES? ARE THERE ANYMORE?



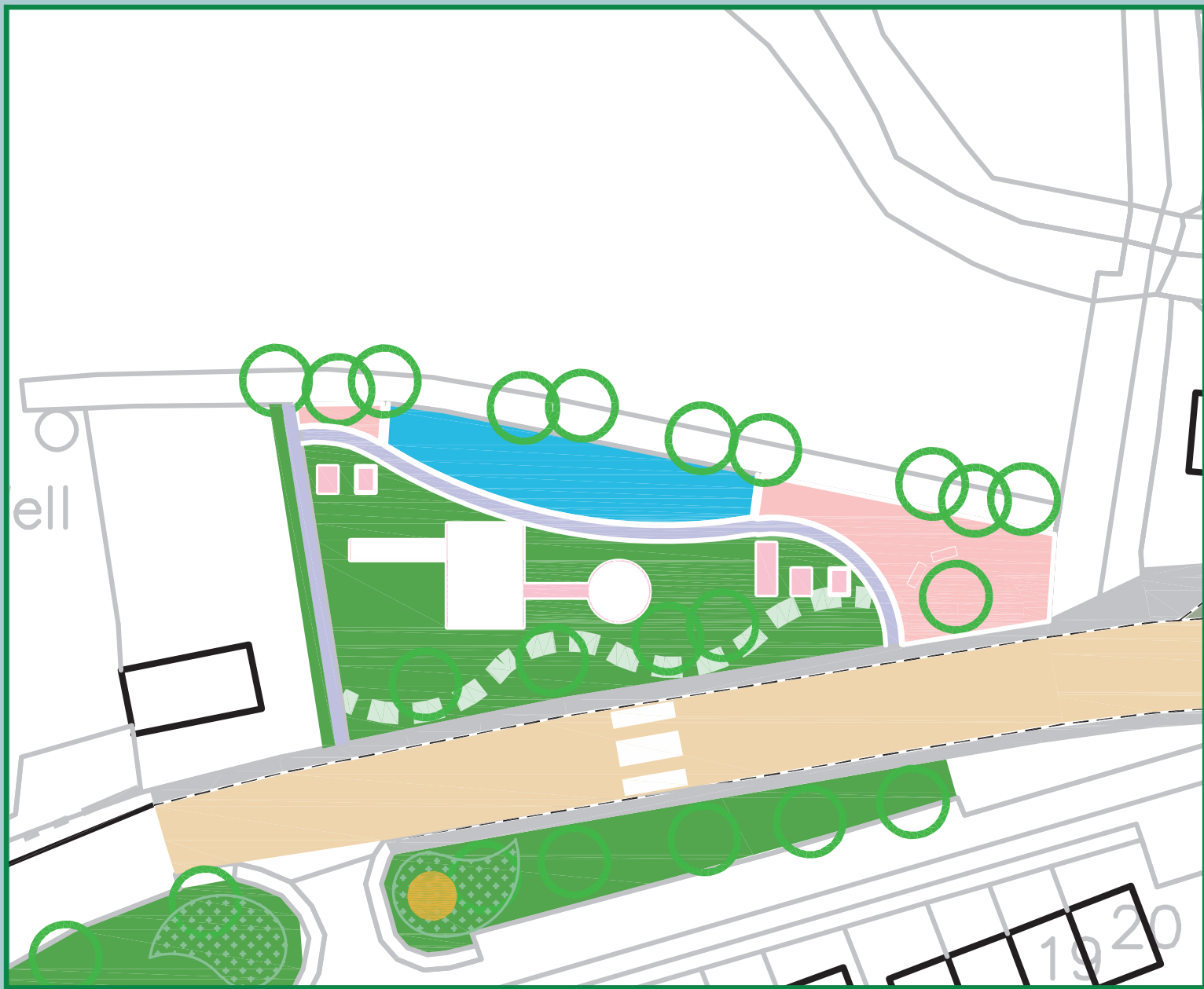
# 3. KEY SPACES

## Draft Inniskeen Public Realm Spatial Plan



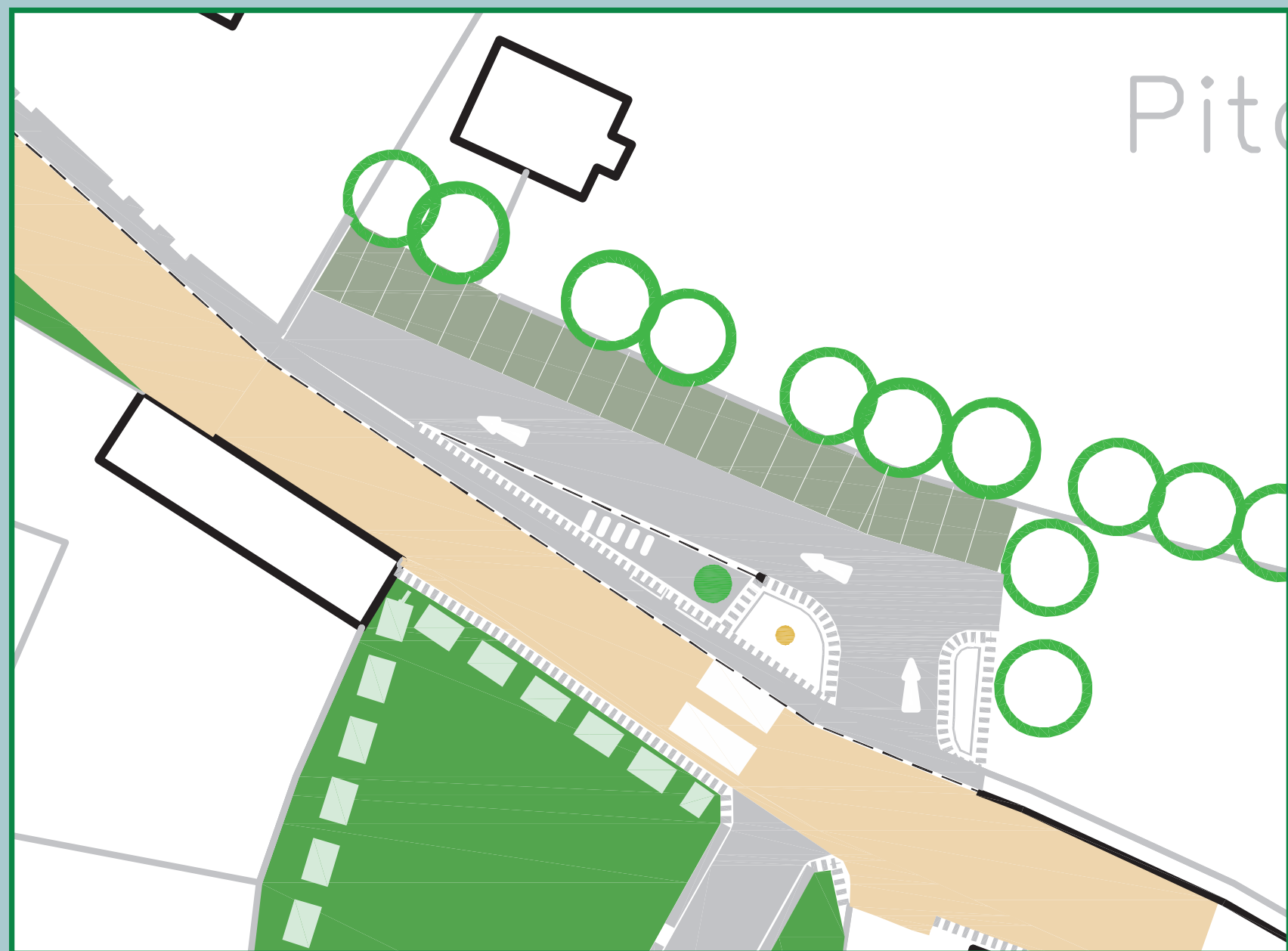
### VILLAGE HEART

A space for both locals and visitors in the heart of the village. Objectives include uniting the tower and graveyard with the traffic island to create one sense of space, and utilise wall boundaries to reinforce the village character of natural stone boundaries and introduce elements such as low planters integrated with seating and infilled with soft landscape. Integrate monuments into the low walls and planters, and widen footpaths where feasible to create safer pedestrian connections utilising natural stone or other high quality materials and street furniture.



### PLAYGROUND

Develop this space as a community resource and community welcome space. It is an existing active space that could be enhanced by increasing biodiversity and introducing signage to define the village core, as well as enhancement of the playground reinforcing the rural village character. Further enhancements include upgrade of existing pedestrian crossing, as well as a proposed Gateway feature or bespoke interpretive signage or waymarker sculpture.



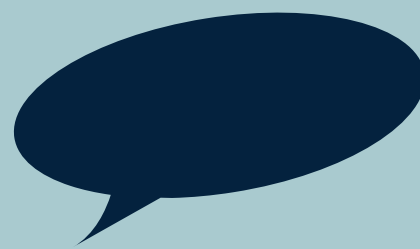
### ST. MARY'S SPACE

An intuitive arrival point for visitors by car or bike to orientate themselves in the vicinity of Kavanagh centre. Increase access provision to Kavanagh Centre for cars, bikes and small coaches as well as proposed pedestrian crossing. Reorganise existing car park and create an attractive pedestrian friendly space with planters, cycle stands and location for a bespoke statue. Bespoke interpretive signage and waymarker to signify arrival. Consideration to be given to relocating community recycling bins.



### OLD RAILWAY STATION

Create an arrival and event space building upon the rich heritage of Railway Station space. Proposed Viewpoint on the railway bridge to create a sense of orientation and memorable experience. Resolve key parking issues in the village by providing improved parking and bus layover space with safe pedestrian connections into the village. Upgrade existing streetscape with high quality materials to provide attractive frontage with increased and enhanced seating and picnic area including biodiverse planting and maintenance regime.

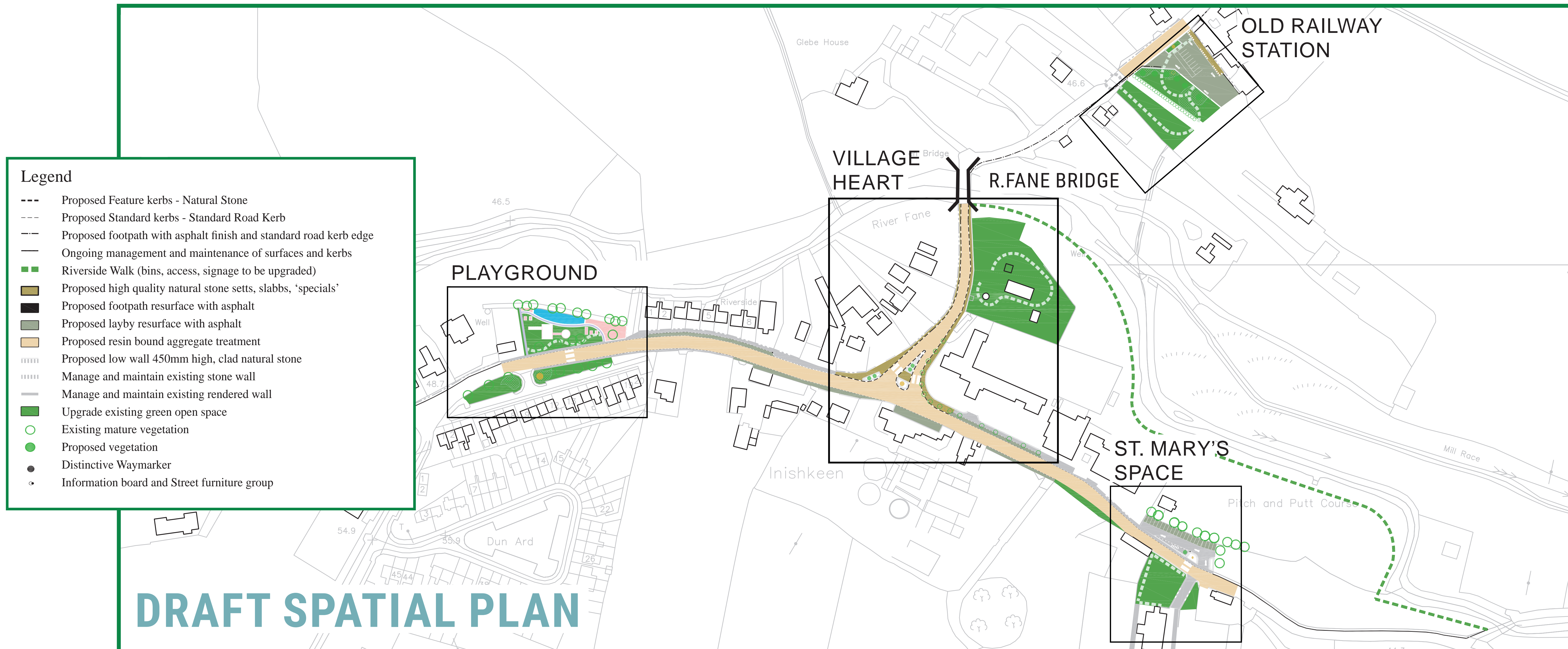


DO YOU AGREE IN RETAINING THE RURAL CHARACTER IN PUBLIC REALM IMPROVEMENTS IS IMPORTANT?



# 4. DRAFT SPATIAL PLAN

## Draft Inniskeen Public Realm Spatial Plan



- Upgraded footpath connections between the key spaces outlined will allow locals and visitors to use the village safely and enjoy the rich heritage, environment and services.
- Proposed pedestrian bridge across the River Fane to respect the existing rural character of the existing bridge
- Proposed footpath connecting old railway station with the heart of the village
- Enhance and tidy up existing footways in other areas of the village including resurfacing existing footways where required



YOUR OPINION COUNTS

WHICH OF THE PROJECTS OUTLINED WOULD YOU LIKE TO SEE PRIORITISED?

Contact: [Inniskeen@paulhogarth.com](mailto:Inniskeen@paulhogarth.com) or complete our **Online Survey** which can be found on the Monaghan County Council website