



Emyvale Village – Removal of Overhead Cables/New Public Lights

Monaghan County Council secured funding under the Town and Village Renewal Scheme from the Department of Rural and Community Development to carry out public realm improvement in Emyvale main street. This is to remove the overhead cables and upgrade the public lighting system for the main street. This was a priority highlighted by the community during consultation to develop a community plan.

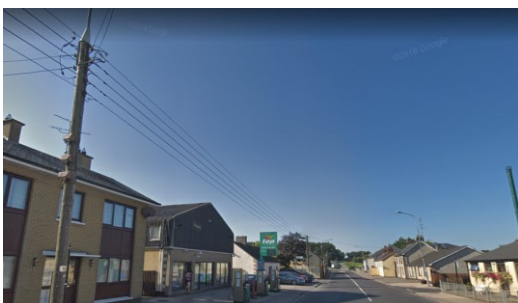
Many of the existing public lights are placed on network, timber poles that require replacement. It is planned to install modern low energy, LED lighting throughout the village as per the Climate Change adaptation plan.

It is also planned to remove the congested over head cables which are to be placed under ground. This will enable new public light columns to be place at correct spacing to create a well lit environment for the public.

The works will involve major excavation of the footpaths and a number of road crossings to lay the new ducts for placing the cables underground. Footpaths to be replaced as existing, in concrete finish. It will also require new connections to many individual premises.

Any queries/comments, please e-mail Monaghan Municipal District at monaghan@monaghancoco.ie up to 31st January 2022

Existing Poles and Cables - Images of Emyvale main street.



Proposed Public Light Layout (North)



Proposed Public Light Layout (South)



All lights will be LED's and the exact lights to be installed will be subject to tendering submissions.

Proposed PL Layout

The most efficient way, both from energy consumption and installation cost points of view, is to illuminate the street is from a single-sided column arrangement. Emyvale main street and the 2 footpaths can be properly illuminated from a single-sided installation (it will be illuminated very similar to the illumination levels that exists there right now)

One of the important issues is to reduce footpath clutter and to reduce the number of PL columns. Single-sided installation is the most efficient from a street clutter point of view

An initial assessment was carried out on both sides of the main street, and it was found that the proposed (right-hand side going north) was by far the better option in order to avoid columns in front of windows, entrances etc and avoid overhanging eaves.



Typical LED Public Lights

The exact lights to be installed will be subject to tendering submissions