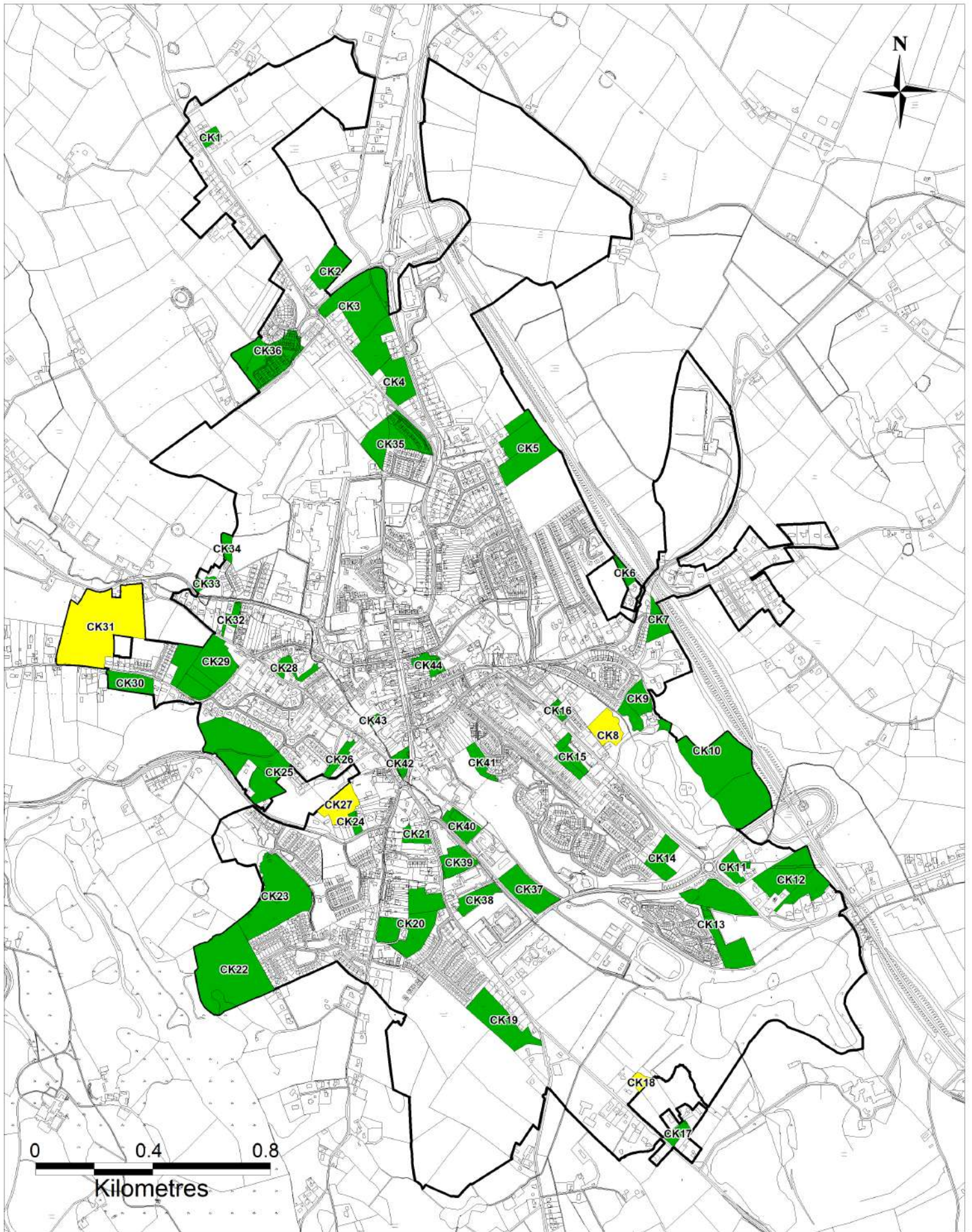


# Carrickmacross (Industry/Enterprise/Employment Lands)

Settlement Capacity Audit - May 2024



— Settlement Envelopment    ■ Tier 1    ■ Tier 2



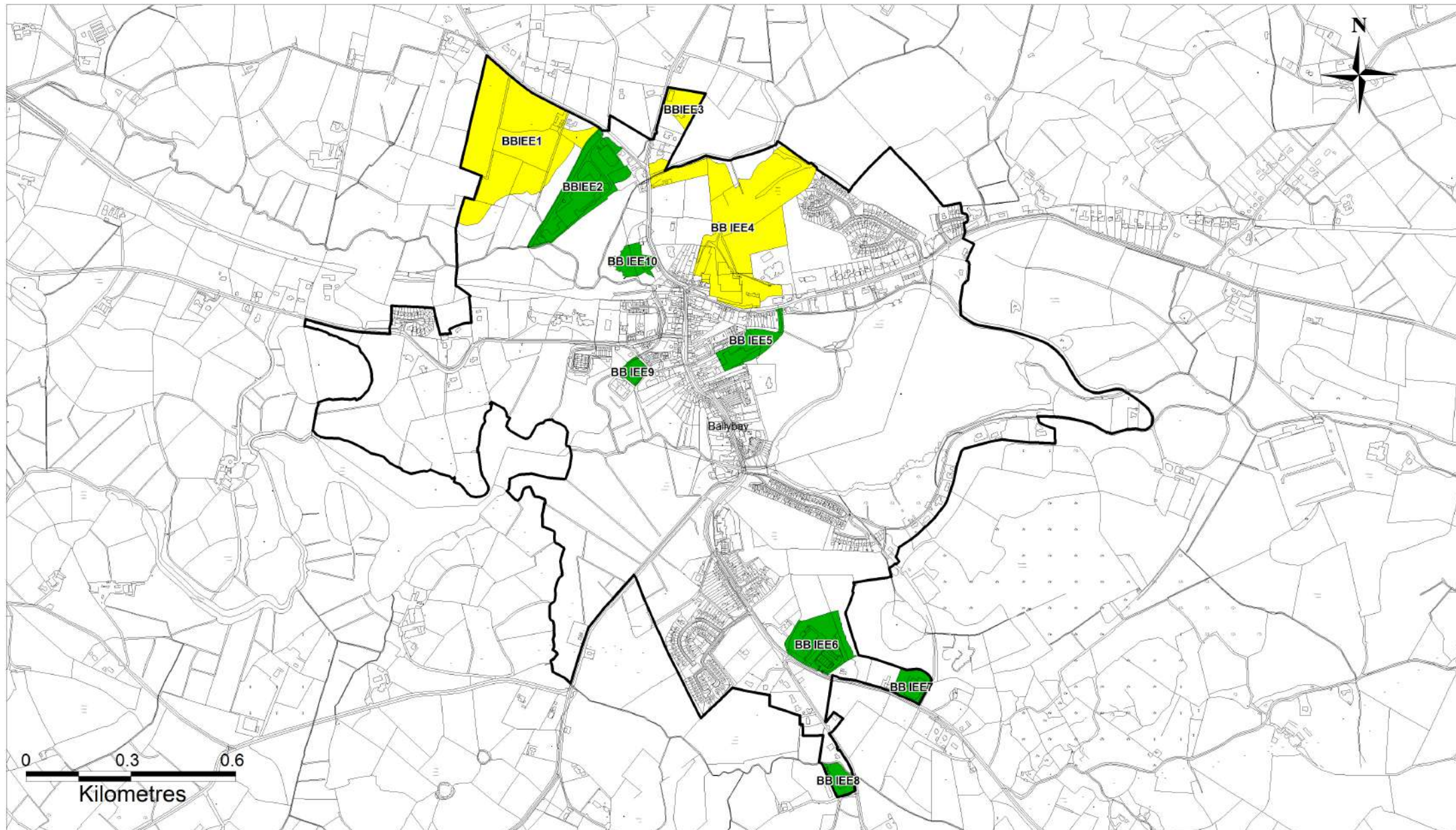
# Carrickmacross (Residential Lands)

Settlement Capacity Audit - May 2024

Tailte Éireann 2023 Mapping OSI Copyright:  
CYAL50343160 ©National Mapping Division of Tailte Éireann.



— Settlement Envelopment    ■ Tier 1    ■ Tier 2

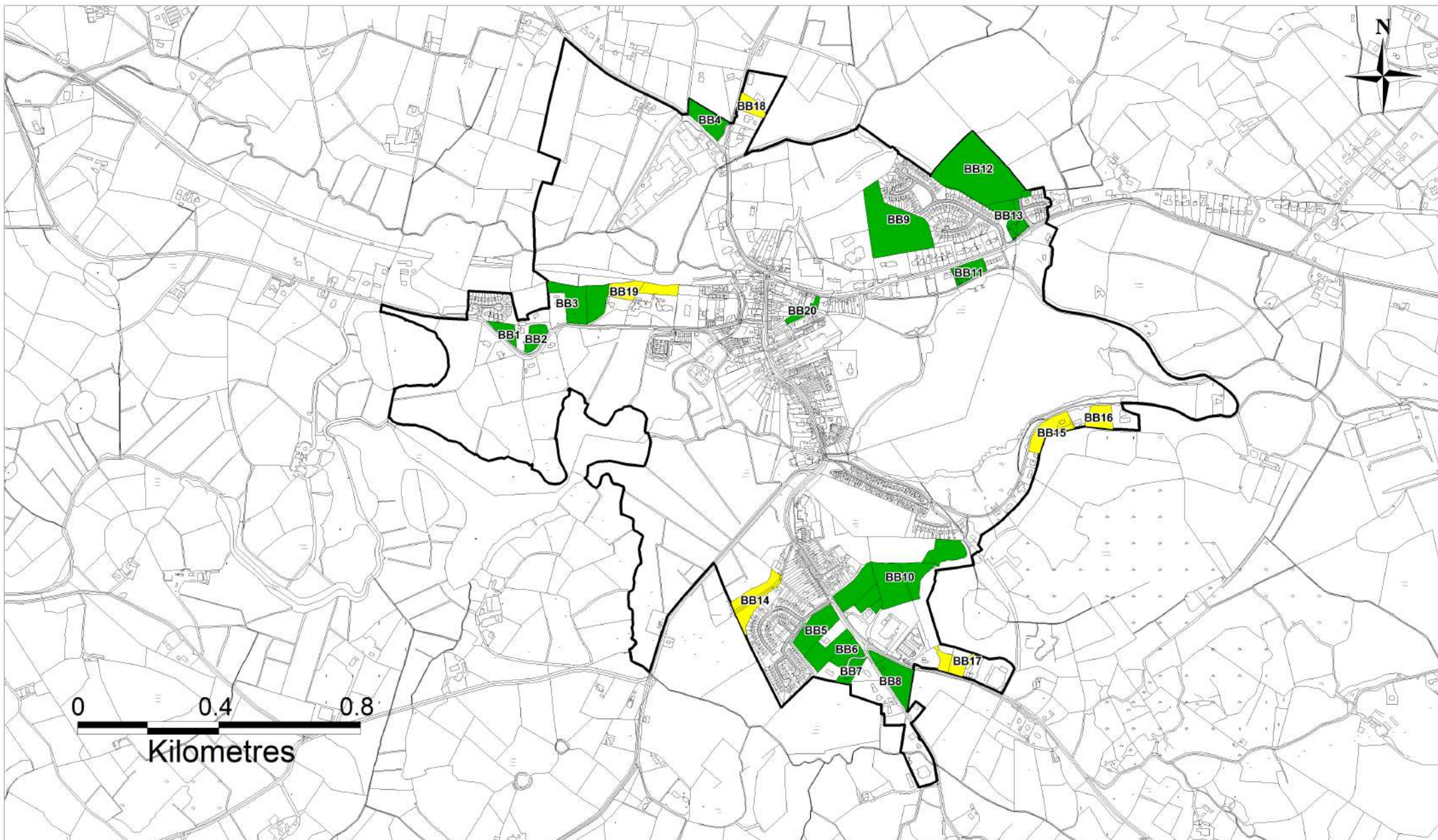


# Ballybay Town (Industry/Enterprise/Employment Lands)

Settlement Capacity Audit - May 2024

— Settlement Envelopment    ■ Tier 1    ■ Tier 2

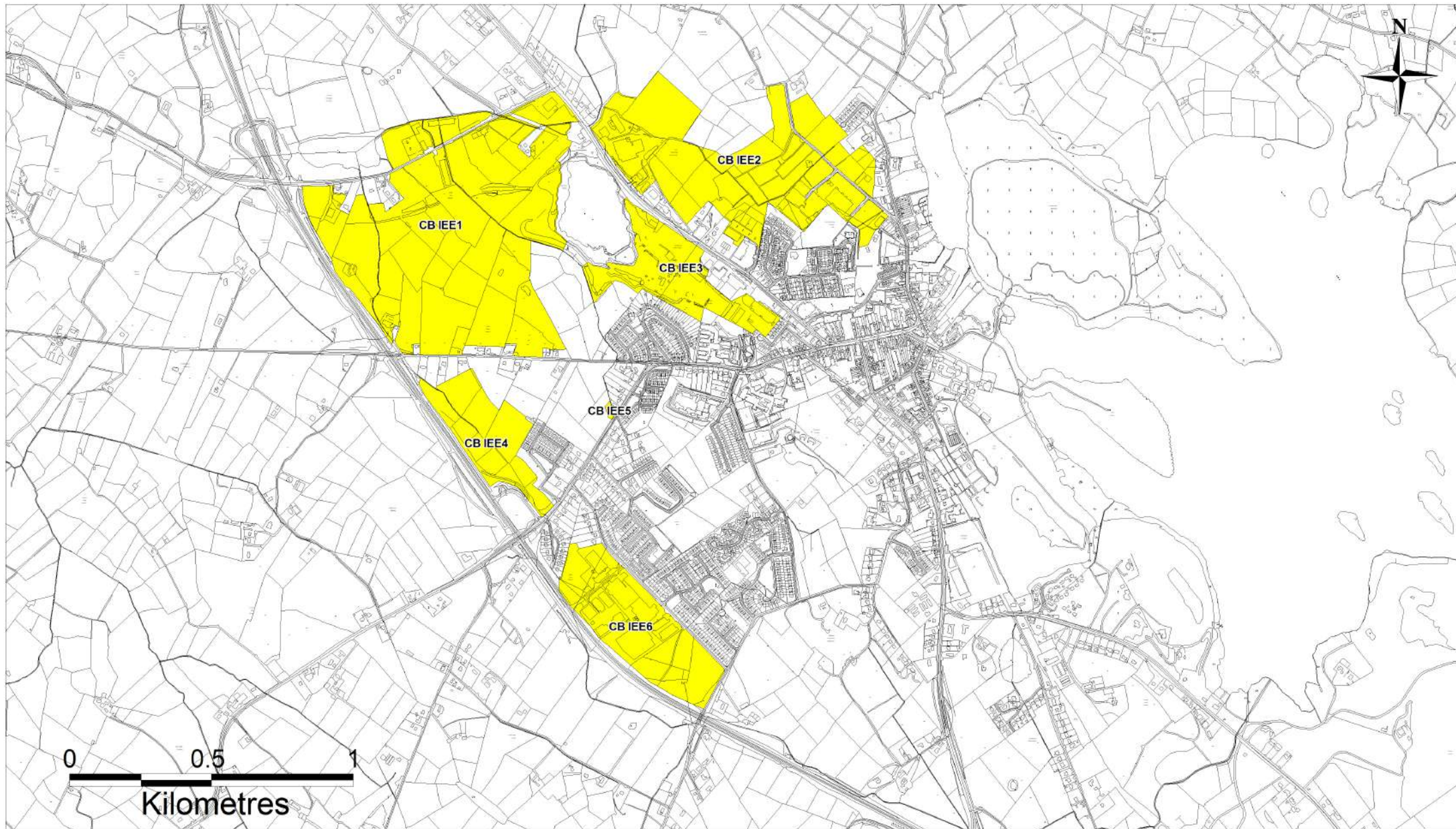




# Ballybay Town (Residential Lands)

Settlement Capacity Audit - May 2024

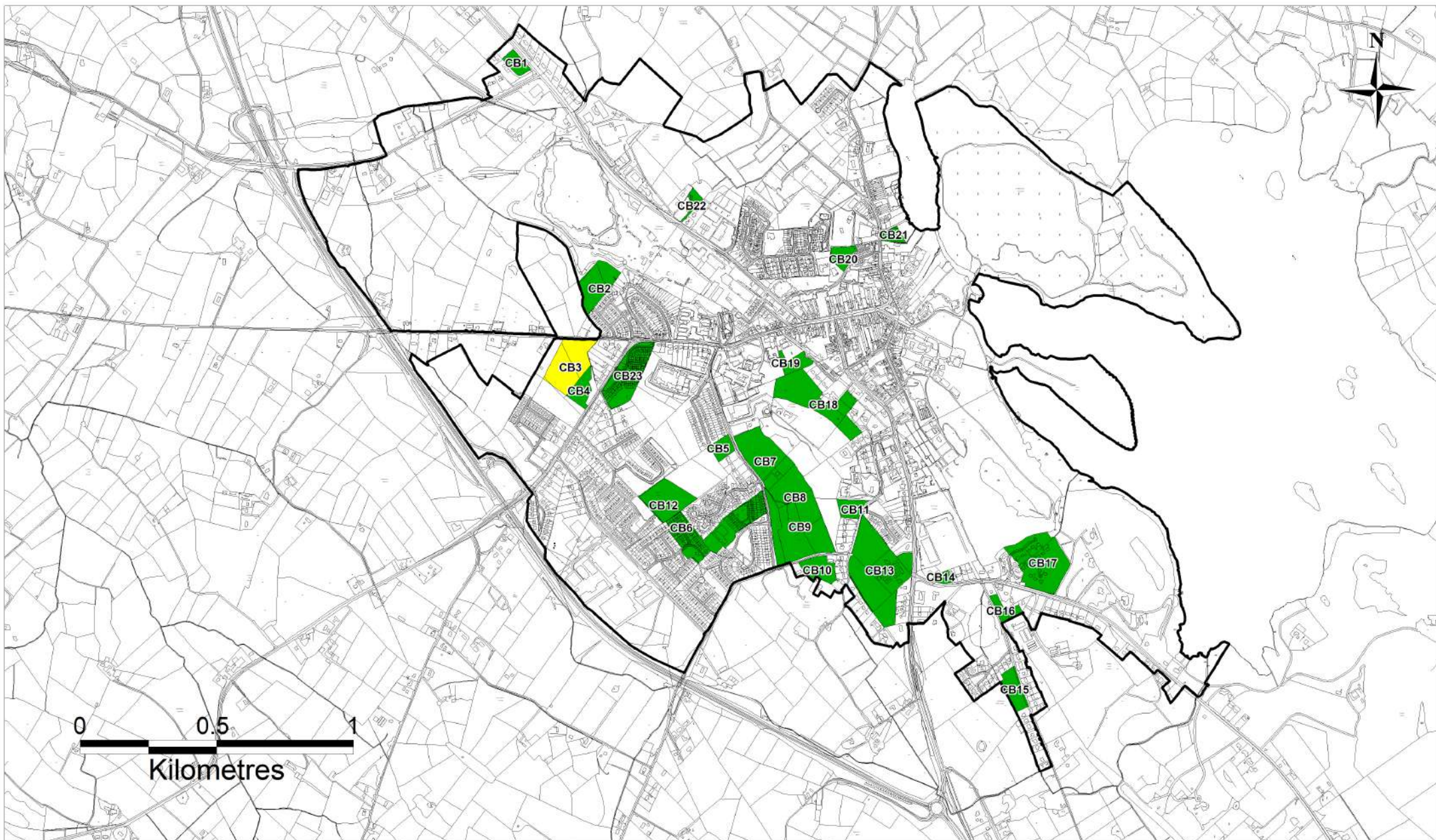




# Castleblayney (Industry/Enterprise/Employment Lands)

Settlement Capacity Audit - May 2024



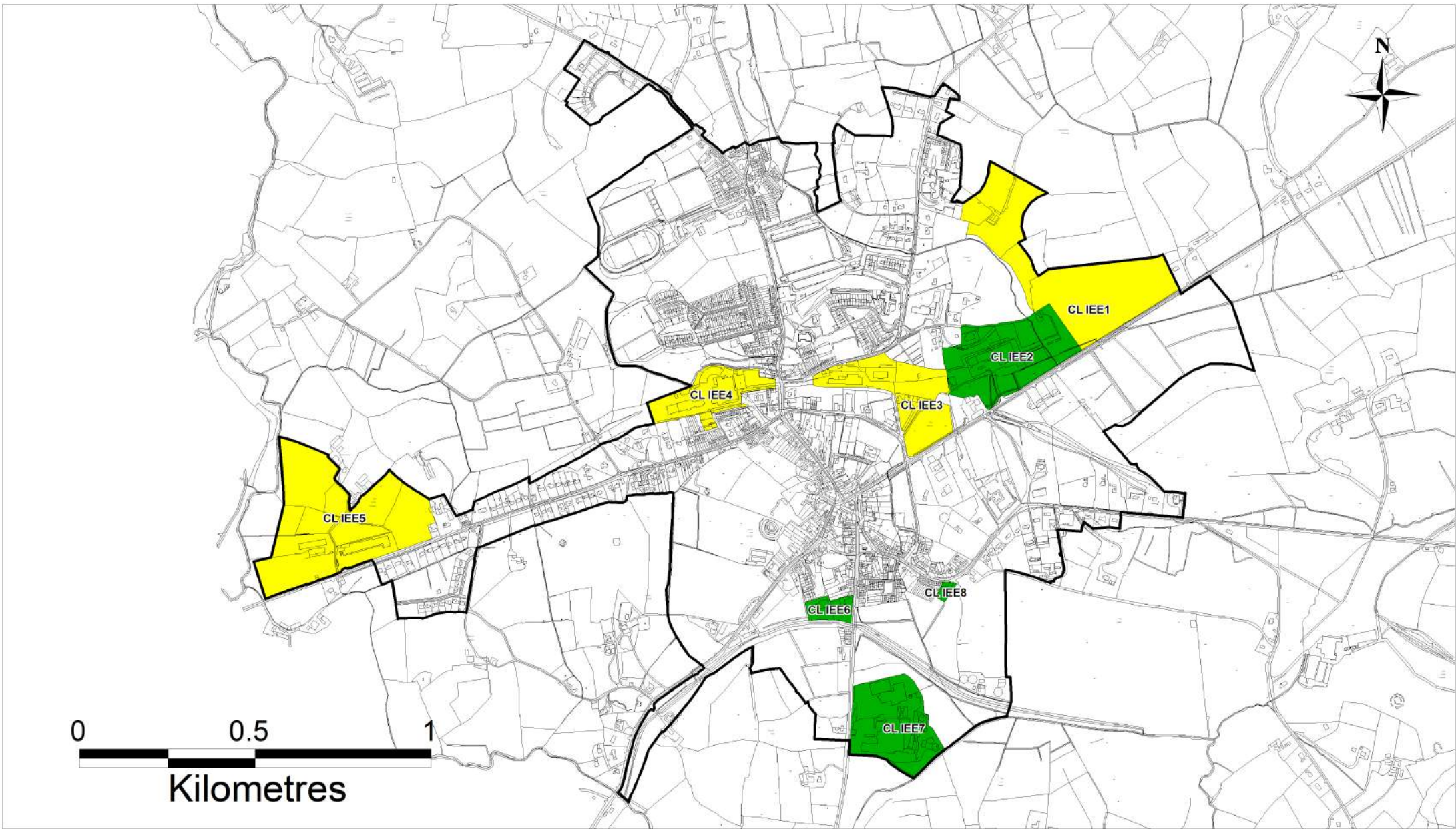


# Castleblayney (Residential Lands)

Settlement Capacity Audit - May 2024

— Settlement Envelopment    ■ Tier 1    ■ Tier 2



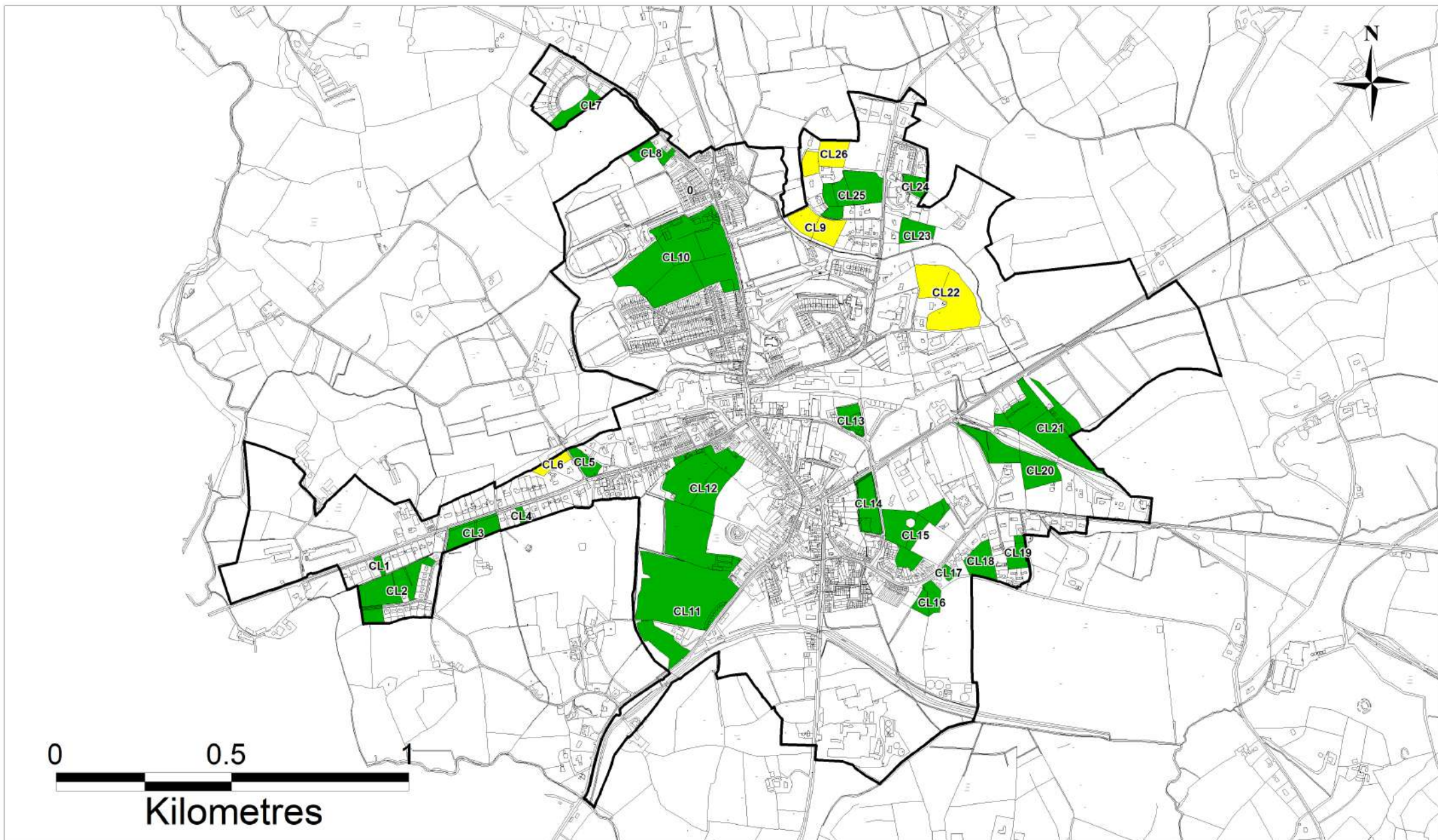


# Clones (Industry/Enterprise/Employment Lands)

Settlement Capacity Audit - May 2024

Settlement Envelopment
  Tier 1
  Tier 2





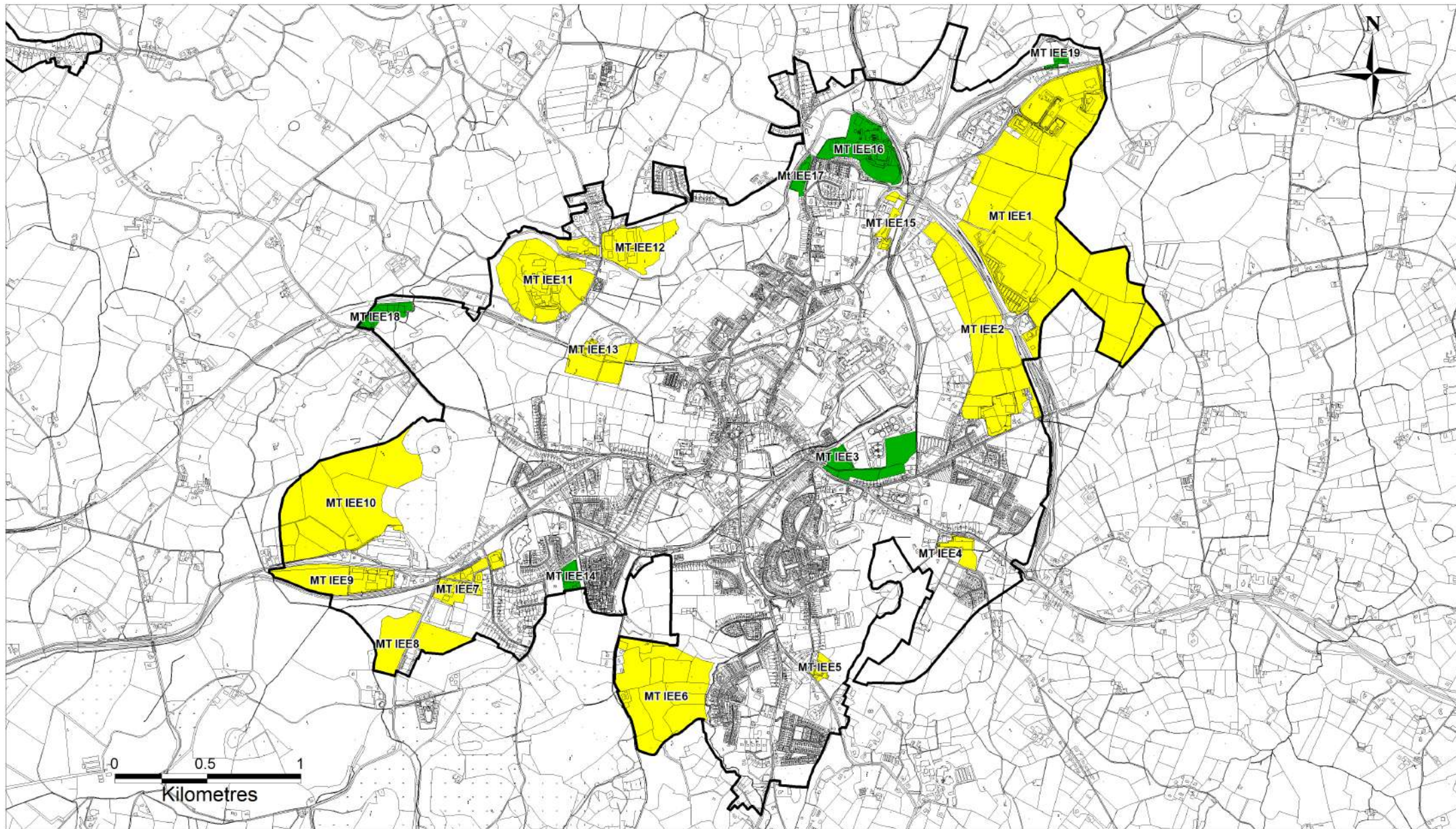
# Clones (Residential Lands)

Settlement Capacity Audit - May 2024

— Settlement Envelopment    ■ Tier 1    ■ Tier 2



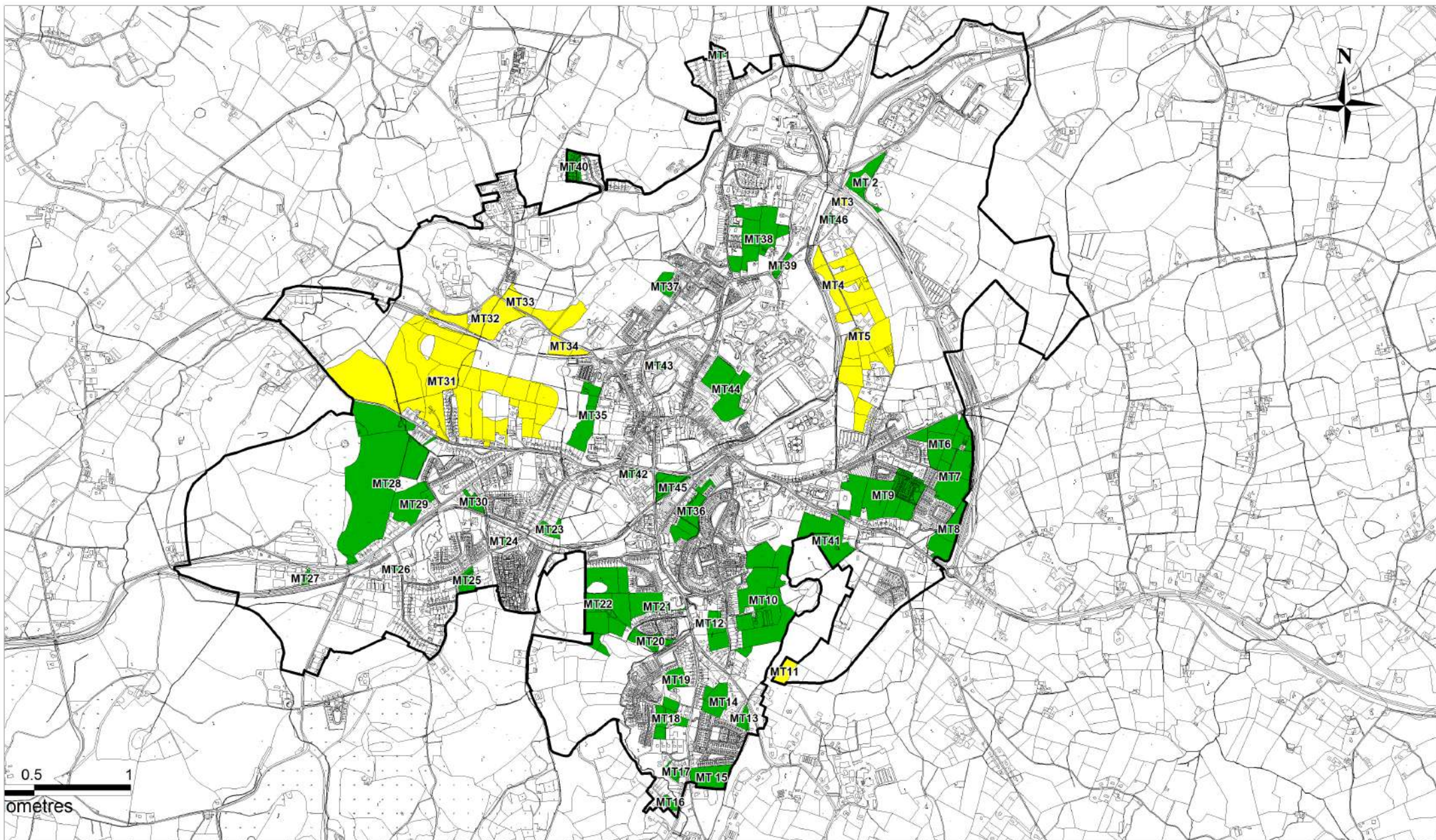




# Monaghan Town (Industry/Enterprise/Employment Lands)

Settlement Capacity Audit - May 2024





# Monaghan Town (Residential Lands)

Settlement Capacity Audit - May 2024

